

Reserved for County Recorder's use.



Doc ID: 007599080001 Type: GEN
Recorded: 04/12/2017 at 02:04:56 PM
Fee Amt: \$7.00 Page 1 of 1
Black Hawk County Iowa
SANDIE L. SMITH RECORDER

File 2017-00017824

Kyle J. Helland, 1107 Technology Parkway, Cedar Falls, Iowa 50613-6951, (319)-266-0161

UNITED STATES PUBLIC LAND SURVEY CORNER CERTIFICATE OF

LAND SURVEY MONUMENTS SITUATED IN SECTION NO. 14, TOWNSHIP NO. 89 NORTH, RANGE
NO. 11 WEST OF THE FIFTH PRINCIPAL MERIDIAN, BLACK HAWK COUNTY, IOWA.
PREVIOUSLY RECORDED IN N/A.

(SHOW REASON FOR PREPARING THIS CERTIFICATE, THE EVIDENCE AND DETAILED PROCEDURES USED IN ESTABLISHING THE
CORNER POSITIONS AND MONUMENTATION FOUND OR PLACED.)

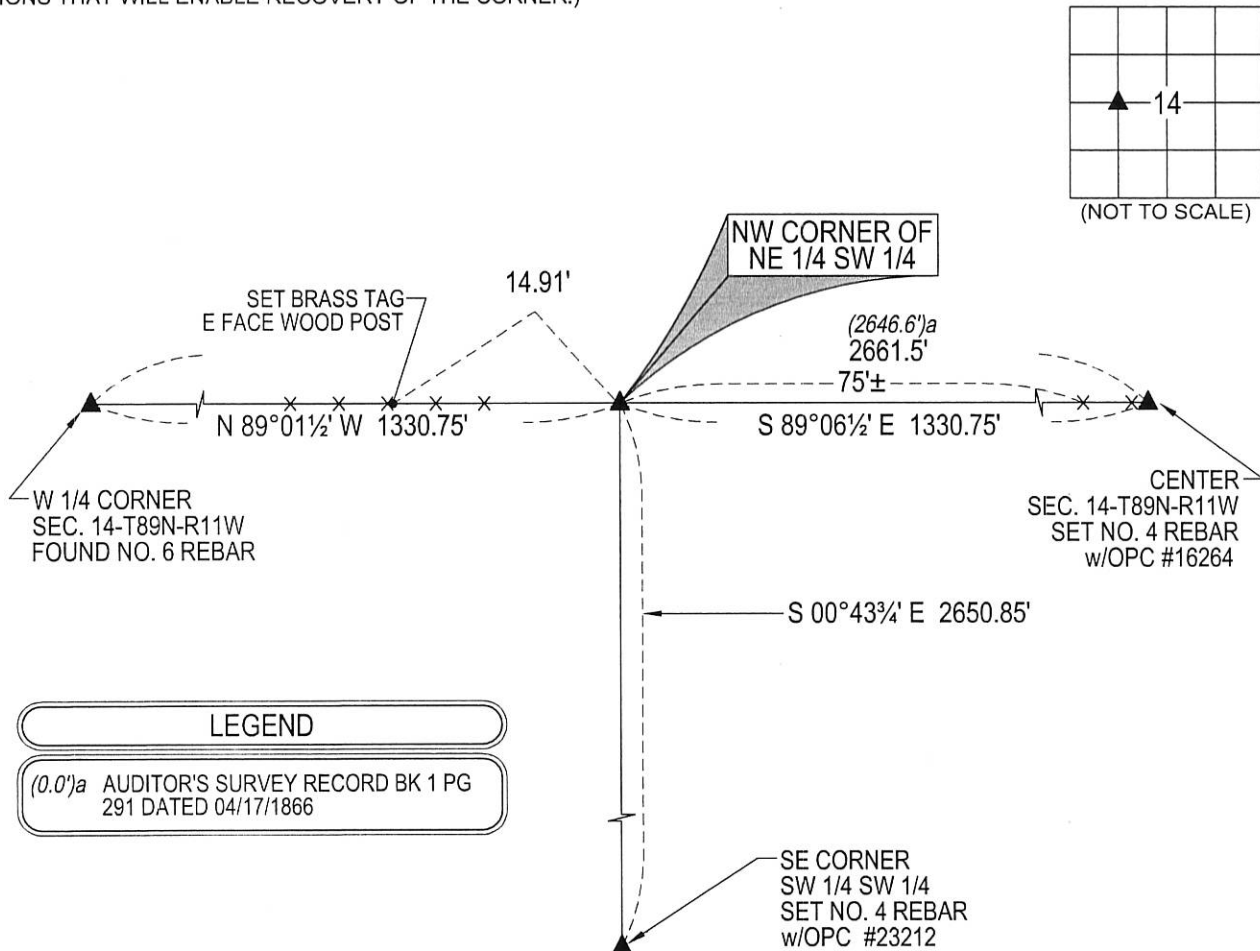
MONUMENT DESCRIPTION AND REMARKS:

NO USPLSCC ON FILE. SURVEY COMPLETED IN THE SW 1/4 OF SEC. 14-T89N-R11W.

→ **NE CORNER OF NW 1/4 SW 1/4:** NO BLACK HAWK COUNTY ENGINEER REFERENCE TIES AVAILABLE.
SEARCHED AREA AT MIDPOINT BETWEEN WEST 1/4 CORNER AND THE CENTER OF SECTION AND IN LINE WITH
THE EXTENSION OF EXISTING FENCE LINES RUNNING EAST AND WEST. EXCAVATED AND FOUND MULTIPLE
SMALL STONES, PIECES OF ROTTEN WOOD AND REMNANTS OF BARB WIRE. THEREFORE, SET NO. 4 REBAR
w/OPC #23212 AT SAID LOCATION. POINT FALLS IN WATERWAY RUNNING NORTH AND SOUTH.

PLAN VIEW

(SHOW A MINIMUM OF THREE REFERENCE TIES TO DURABLE PHYSICAL OBJECTS, RELEVANT MONUMENTS AND PHYSICAL
CONDITIONS THAT WILL ENABLE RECOVERY OF THE CORNER.)



(BEARINGS ARE ASSUMED)



HELLAND ENGINEERING & SURVEYING, LTD.
1107 Technology Parkway
Cedar Falls, Iowa 50613-6951
(319)-266-0161

SHINER = 8d. NAIL & 1 5/16"Ø METAL SHINER DRAWN BY: SMN
BRASS TAG = 8d. NAIL & 13/16"Ø BRASS TAG
OPC = PLASTIC CAP (O=ORANGE, R=RED, Y=YELLOW)
(00') RECORDED AS FILE NAME: 17-120-51.DWG



I hereby certify that this land surveying document was prepared
and the related survey work was performed by me or under my
direct personal supervision and that I am a duly licensed
Professional Land Surveyor under the laws of the State of Iowa.

Kyle J. Helland 4/3/17
Kyle J. Helland
License Number 23212
My license renewal date is December 31, 2017.
All pages or sheets are covered by this seal except:

LIST CORNERS TO BE INDEXED

CORNER	SECTION	TOWNSHIP	RANGE
NE COR. NW 1/4 SW 1/4	14	89N	11W
SE COR. SW 1/4 NW 1/4	14	89N	11W
SW COR. SE 1/4 NW 1/4	14	89N	11W
NW COR. NE 1/4 SW 1/4	14	89N	11W