

INDEX

BLACK HAWK COUNTY, IOWA:ss

FEE BOOK #

2006 2502

PROOF

FILED FOR RECORD JUL 27, 2005, AT 4:00 P.M. FEE 1-5.00-1.00/

COMPARED

*Patricia A. Luss*

BLACK HAWK COUNTY RECORDER

CRAWFORD ENGINEERING &amp; SURVEYING INC 205 SECOND AVE NE PO BOX 793 INDEPENDENCE IA 50644

LAWRENCE G. CRAWFORD, P.E. &amp; L.S. Crawford Engineering &amp; Surveying, Inc., Independence, Iowa 319/334-7077

## UNITED STATES PUBLIC LAND SURVEY CORNER CERTIFICATE

OF

Land Survey Monuments situated in Section 13, Township 89 N, Range 11 W, of the Fifth Principal Meridian, Black Hawk County, Iowa.

Previously recorded in N/A in County Recorder's Office.

## Monument Description and Remarks:

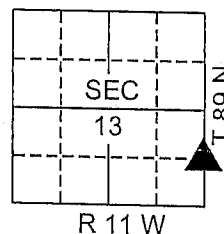
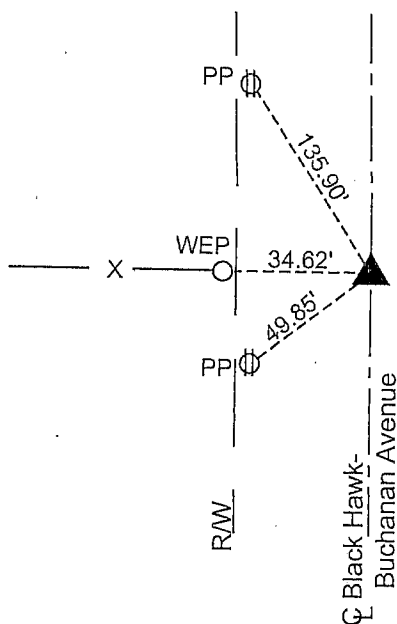
Reason for preparing certificate: No certificate on file

Evidence and detailed procedure used to establish corner position: Corner position established midway and on line between the East 1/4 Corner and the Southeast Corner of Section 13

Monumentation found or placed: Placed 1/2" rebar with YPC #11572.

## PLAN-VIEW

(Show a minimum of three reference ties to durable physical objects, relevant monuments and physical conditions that will enable recovery of the corner).

SE Corner  
NE 1/4, SE 1/4  
Section 13-89-11  
Set 1/2" rebar w/YPC #11572

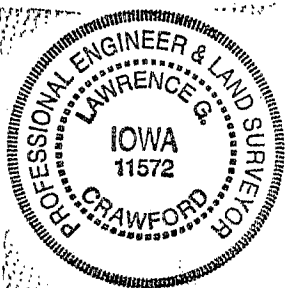
I hereby certify that the survey work was completed and this land surveying document was prepared by me or under my direct personal supervision and that I am a duly licensed land surveyor under the laws of the State of Iowa.

Signature: *Lawrence G. Crawford*  
LAWRENCE G. CRAWFORD, P.E. & L.S.

Date: 7-21-05 Reg. No. 11572

My license renewal date is December 31, 2005

SEAL



Corners	Section	Twp.	Range
SE Corner NE 1/4, SE 1/4	13	89 N	11 W