

FEE BOOK # 2005 06841

PROOF FILED FOR RECORD SEP 14, 2004, AT 3:00 P. M. FEE N/C

COMPARED

BLACK HAWK COUNTY RECORDER

BLACK HAWK COUNTY ENGINEER

PREPARED BY: BLACK HAWK COUNTY ENGINEERS OFFICE  
316 E. FIFTH STREET, ROOM 211 WATERLOO, IOWA 50703

PH.# (319) 833-3008  
FAX.# (319) 833-3139

SLSI 9-94  
CERT 12-96

UNITED STATES PUBLIC LAND SURVEY CORNER CERTIFICATE OF  
Land Survey Monuments situated in Section 13 , Township 89 N ,  
Range 11 W , of the Fifth Principal Meridian, BLACK HAWK County, Iowa.  
Previously recorded in Misc. Book N/A , Page N/A , in County Recorder's Office.

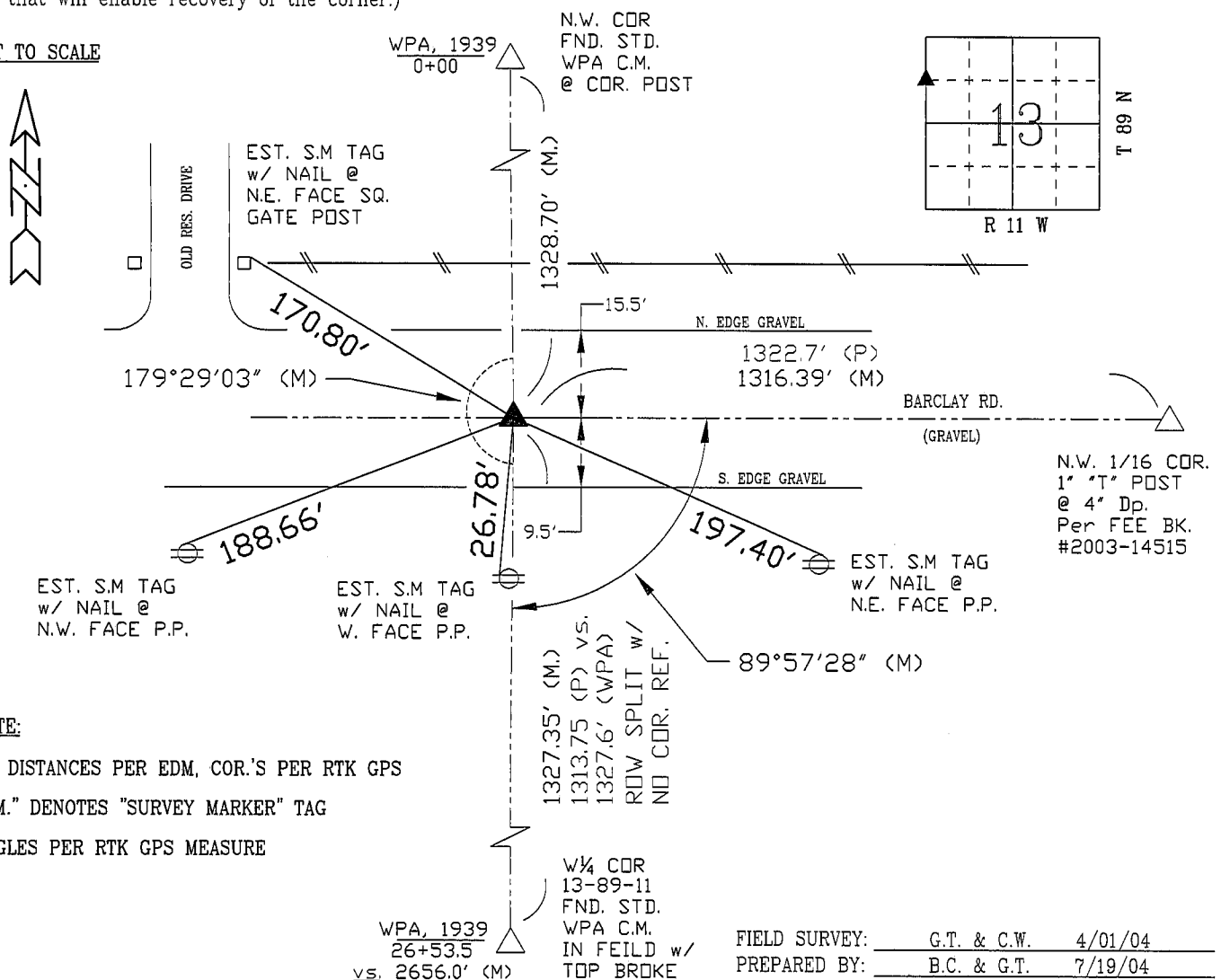
(Show reason for preparing this certificate, the evidence and detailed procedures used in establishing the corner positions and monumentation found or placed.)

Monument Description and Remarks: N.W. COR S.W.1/4-N.W.1/4, SECT. 13-89-11  
FOUND 2" SOLID STEEL PIN 12" DEEP IN BARCLAY RD., BEING ALIGNED WITH  
CENTERLINE OF ROAD GOING WEST. UTILIZED MONUMENT TO ESTABLISH C.N.  
CORNER SECT. 13-89-11. CORNER FOUND TO BE "NOT" ON THE WEST LINE OF  
THE N.W. 1/4. PLS. #1841 (MISC. 205-698) MEAS. FROM E. & S. PRODUCE TWO  
LOC.'S 6.3' W. & 13.6' S. w/ MIN. EXCAV. YIELDING NO COR. @ EITHER LOC.  
CORNER HELD DUE TO FIT w/ WPA ROW SPLIT & C.N. 1/16 COR. LOC. PRODUCED.

## PLAN - VIEW

(Show a minimum of three reference ties to durable physical objects, relevant monuments and physical conditions that will enable recovery of the corner.)

NOT TO SCALE



## CERTIFICATION



I hereby certify that this land surveying document was prepared and the related survey work was performed by me or under my direct personal supervision and that I am a duly licensed Land Surveyor under the laws of the State of Iowa.

Geoffrey Allen Zinker 9/03/04 (Date)

License Number 15748

My license renewal date is December 31, 2004

Pages or sheets covered by this seal:

This Land Corner Certificate Only.

LIST CORNERS TO BE INDEXED

Corner      Section - Township - Range

N.W. COR 13 89 N 11 W  
SW1/4-NW1/4

N.E. COR 14 89 N 11 W  
SE1/4-NE1/4