

PROOF FILED FOR RECORD SEP 14 2004 AT 3:00 P. M. FEE N/C

COMPARED

BLACK HAWK COUNTY RECORDER

BLACK HAWK COUNTY ENGINEER

PREPARED BY: BLACK HAWK COUNTY ENGINEERS OFFICE  
316 E. FIFTH STREET, ROOM 211 WATERLOO, IOWA 50703

PH.# (319) 833-3008  
FAX.# (319) 833-3139

SLSI 9-94  
CERT 12-96

UNITED STATES PUBLIC LAND SURVEY CORNER CERTIFICATE OF  
Land Survey Monuments situated in Section 13 , Township 89 N ,  
Range 11 W , of the Fifth Principal Meridian, BLACK HAWK County, Iowa.  
Previously recorded in Misc. Book N/A , Page N/A , in County Recorder's Office.

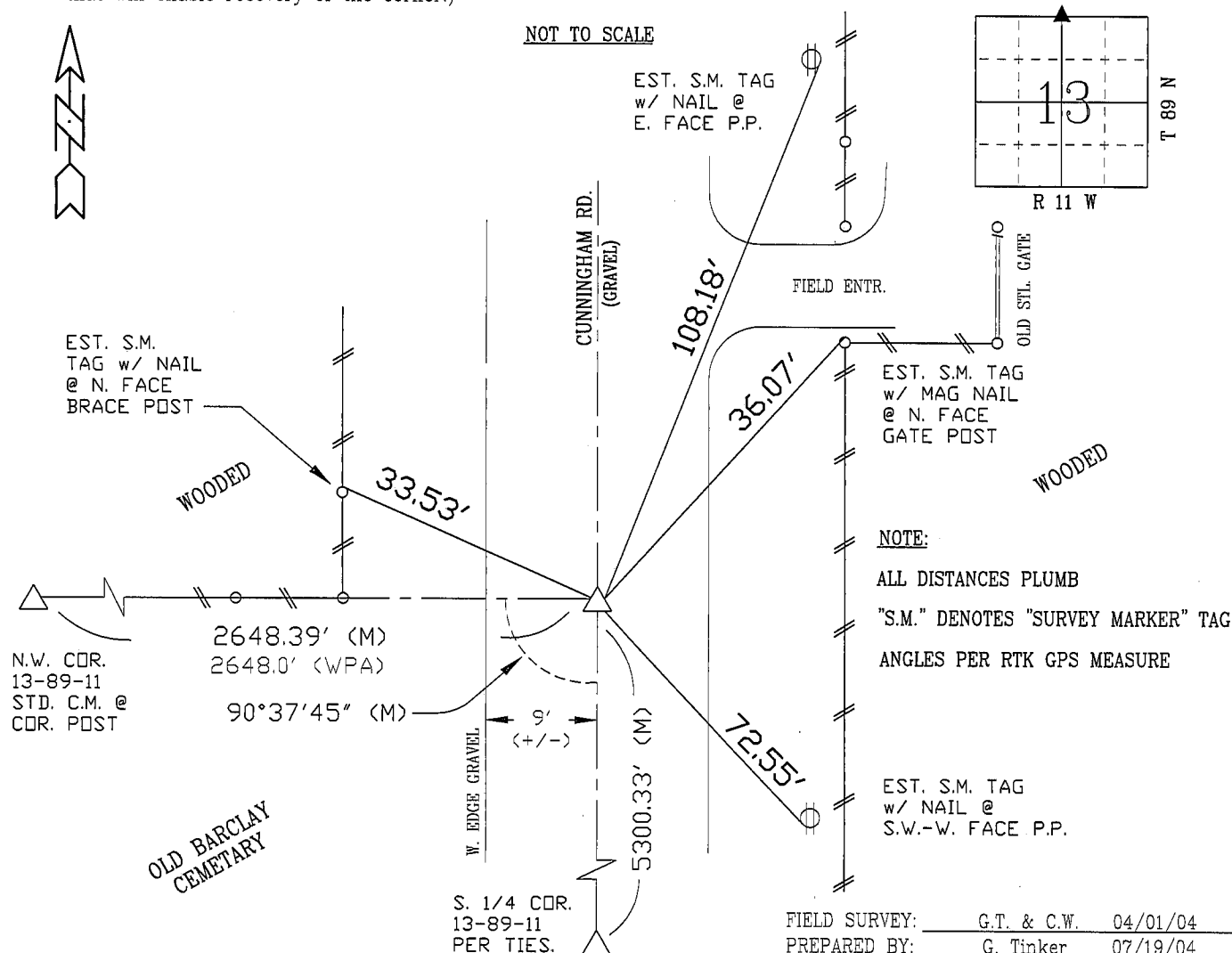
(Show reason for preparing this certificate, the evidence and detailed procedures used in establishing the corner positions and monumentation found or placed.)

Monument Description and Remarks: FND. 1-1/2" PINCHED PIPE @ 1" DEEP.  
APPROX. 9' EAST OF W. EDGE GRAVEL ROAD, ALIGNED WITH FENCE TO WEST.  
CORNER UTILIZED TO EST. N/S CENTERLINE OF SECTION TO EST. C.N. 1/16th  
CORNER OF SAID SECTION.

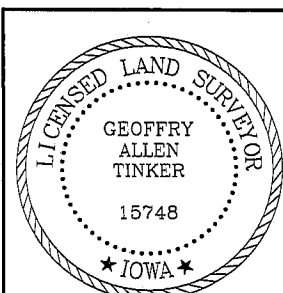
REFER TO "RECORD OF SURVEY" OF SAID SECTION FOR ADDITIONAL GEOM.  
LAND CORNER REFERENCES.

## PLAN - VIEW

(Show a minimum of three reference ties to durable physical objects, relevant monuments and physical conditions that will enable recovery of the corner.)



## CERTIFICATION



I hereby certify that this land surveying document was prepared and the related survey work was performed by me or under my direct personal supervision and that I am a duly licensed Land Surveyor under the laws of the State of Iowa.

Geoffrey Allen Tinker 9/03/04 (date)

License Number 15748

My license renewal date is December 31, 2004

Pages or sheets covered by this seal:

This Land Corner Certificate Only.

LIST CORNERS TO BE INDEXED

<u>Corner</u>	<u>Section</u>	<u>- Township</u>	<u>- Range</u>
N. 1/4	13	89 N	11 W
S. 1/4	12	89 N	11 W