

PROOF *for* FILED FOR RECORD NOV 25, 2002, AT 3:00P. M. FEE N/C

COMPARED

Patricia A. Suss

BLACK HAWK COUNTY RECORDER

BLACK HAWK COUNTY ENGINEER

PREPARED BY: BLACK HAWK COUNTY ENGINEERS OFFICE
316 E. FIFTH STREET, ROOM 211 WATERLOO, IOWA 50703PH.# (319) 833-3008
FAX.# (319) 833-3139SLSI 9-94
CERT 12-96

UNITED STATES PUBLIC LAND SURVEY CORNER CERTIFICATE OF
Land Survey Monuments situated in Section 13, Township 89 N,
Range 11 W, of the Fifth Principal Meridian, BLACK HAWK County, Iowa.
Previously recorded in Misc. Book N/A, Page N/A, in County Recorder's Office.

(Show reason for preparing this certificate, the evidence and detailed procedures used in establishing the corner positions and monumentation found or placed.)

Monument Description and Remarks: C.W. 1/16 SECTION 13-89-11
FOUND 1" "T" POST C.L. BAKER ROAD @ 3" DEEP & ALIGNED w/ FENCE EAST.
CORNER RECOVERED FOR BRIDGE REPL. PROJECT ALONG BAKER ROAD.

PLAN - VIEW

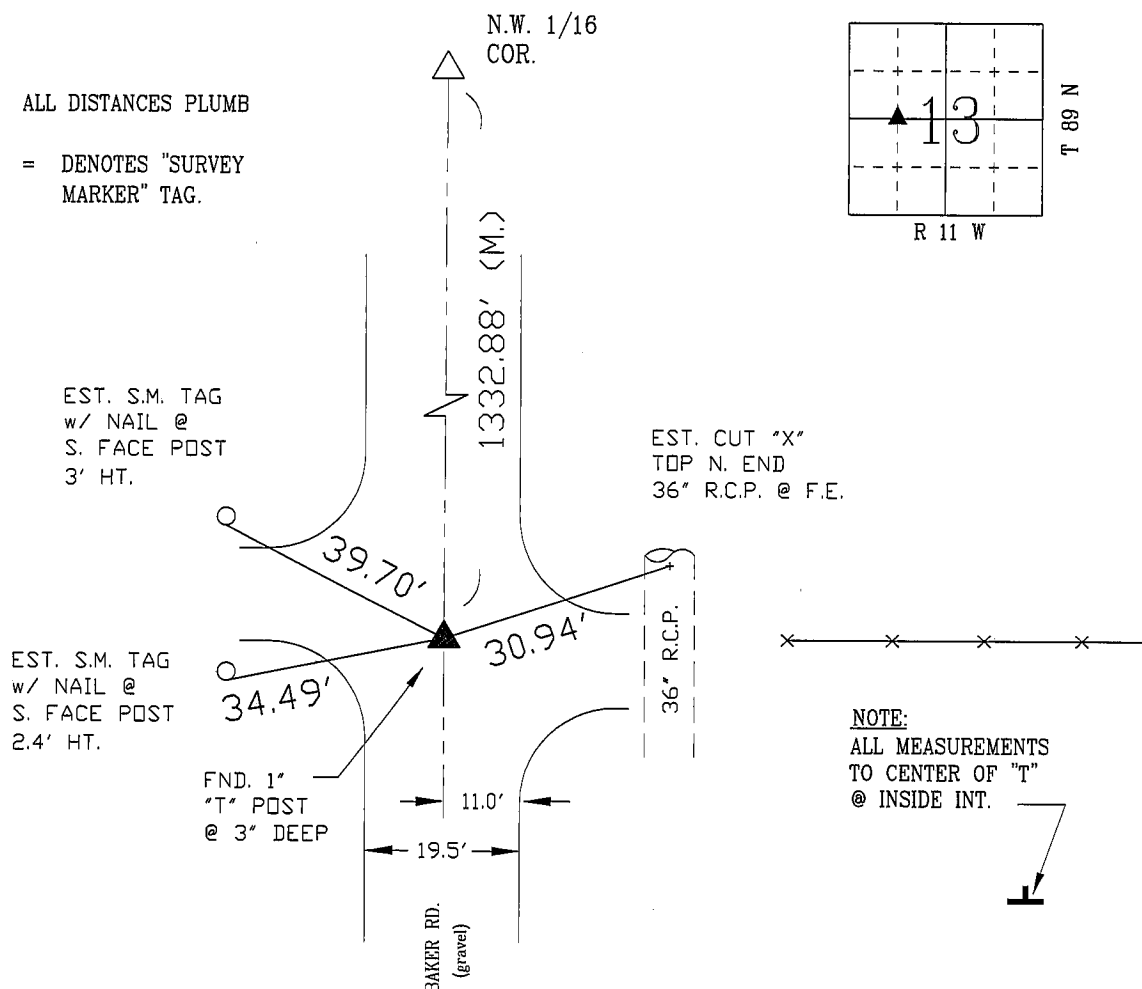
(Show a minimum of three reference ties to durable physical objects, relevant monuments and physical conditions that will enable recovery of the corner.)



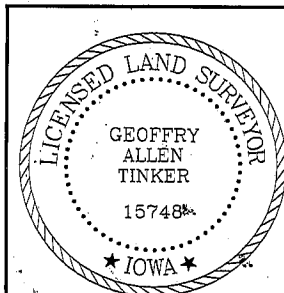
NOTE: ALL DISTANCES PLUMB

"S.M." = DENOTES "SURVEY
MARKER" TAG.

NOT TO SCALE

FIELD SURVEY: G.T. & C.W. 11/14/02
PREPARED BY: G.T. 11/22/02

CERTIFICATION



I hereby certify that this land surveying document was prepared and the related survey work was performed by me or under my direct personal supervision and that I am a duly licensed Land Surveyor under the laws of the State of Iowa.

Geoffrey Allen Tinker 11-22-02
Geoffrey Allen Tinker (date)

License Number 15748

My license renewal date is December 31, 2002

Pages or sheets covered by this seal:

This Land Corner Certificate Only.

LIST CORNERS TO BE INDEXED

Corner	Section	Township	Range
C.W. 1/16	13	89 N	11 W