

PROOF FILED FOR RECORD APR 21 2003 AT 4:00P. M. FEE 1-5.00/.

COMPARED

Patricia A. Less

BLACK HAWK COUNTY RECORDER

HELLAND ENGINEERING & SURVEYING LTD

Paul H. Helland, 1107 Technology Parkway, Cedar Falls, Iowa 50613-6951, (319)-266-0161

UNITED STATES PUBLIC LAND SURVEY CORNER CERTIFICATE
OFLAND SURVEY MONUMENTS SITUATED IN SECTION NO. 12, TOWNSHIP NO. 89 NORTH, RANGE
NO. 11 WEST OF THE FIFTH PRINCIPAL MERIDIAN, BLACK HAWK COUNTY, IOWA.

PREVIOUSLY RECORDED IN BOOK _____, PAGE _____.

(SHOW REASON FOR PREPARING THIS CERTIFICATE, THE EVIDENCE AND DETAILED PROCEDURES USED IN ESTABLISHING THE
CORNER POSITIONS AND MONUMENTATION FOUND OR PLACED.)

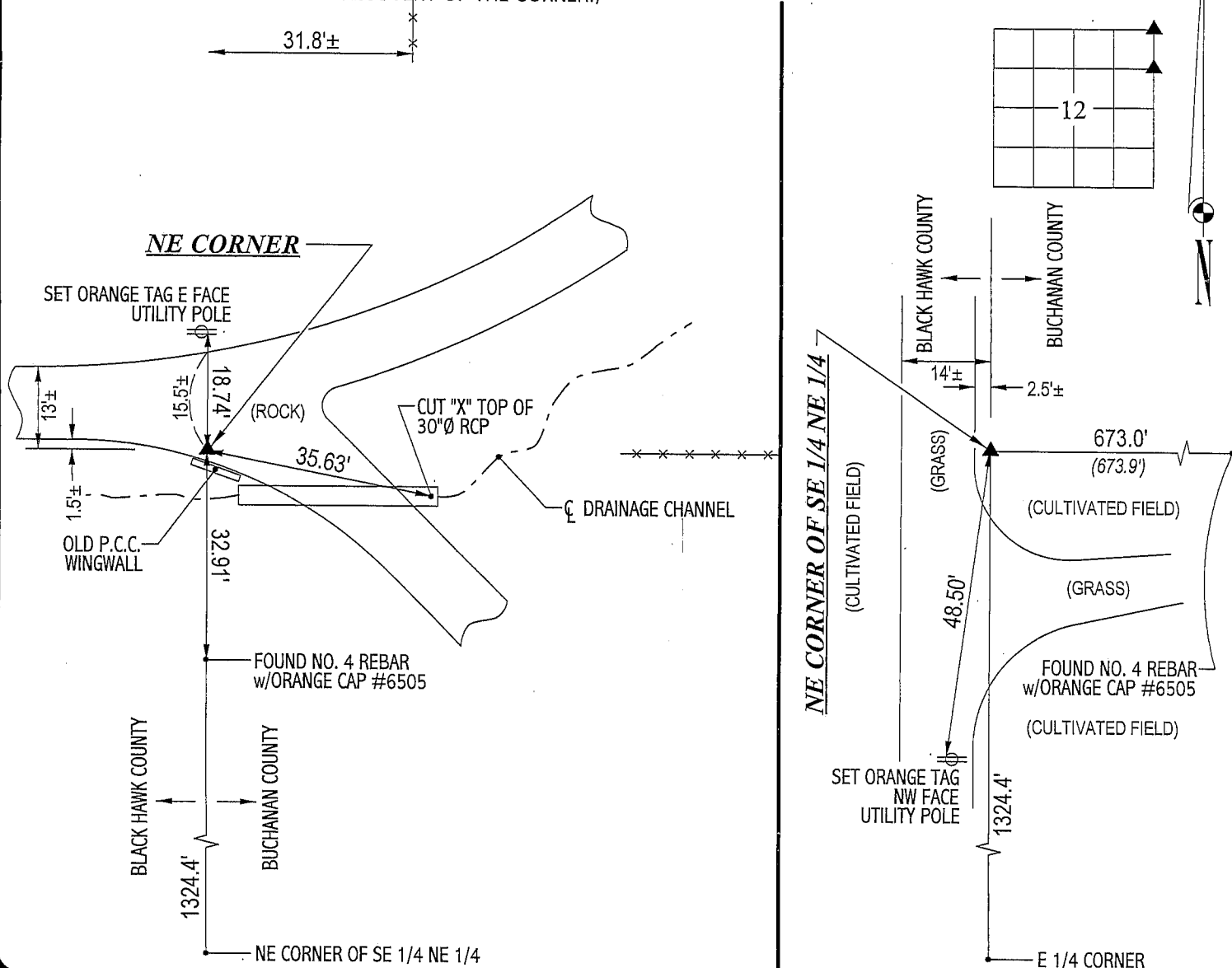
MONUMENT DESCRIPTION AND REMARKS:

NO CORNER CERTIFICATE ON FILE. SURVEY DONE IN SWFRL 1/4 NWFRL 1/4 OF SEC. 7-T89N-R10W.

- NE CORNER: ALL OF BLACK HAWK COUNTY ENGINEER REFERENCE TIES DATED 8/28/1939 ARE OBLITERATED. ALL BUCHANAN COUNTY
ENGINEER REFERENCE TIES ARE OBLITERATED. PER TIES DATED 8/28/1939 NOTHING WAS FOUND @ CORNER, IT WAS REESTABLISHED
AND A CONCRETE MONUMENT WAS SET 12" DEEP. EXTENSIVE EXCAVATION WAS PERFORMED BY HES IN 1976 FOR C.M. AFTER
RUNNING IN CHAINING DISTANCES FROM THE NORTH & THE SOUTH, BELIEVE INSTALLATION OF CONCRETE WINGWALL OBLITERATED
CONCRETE MONUMENT. IN 1976 FOUND WOOD CORNER POST 4.0' DEEP AND SET NO. 4 REBAR w/ORANGE CAP #6505 ABOVE. FOUND
SAID NO. 4 REBAR w/ORANGE PLASTIC CAP #6505 0.6' DEEP.

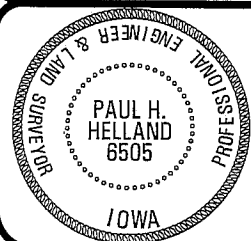
- NE CORNER OF SE 1/4 NE 1/4: SET NO. 4 REBAR w/ORANGE PLASTIC CAP #6505 @ MIDPOINT BETWEEN NE CORNER & E 1/4 CORNER
OF SEC. 12, 0.5' DEEP IN CULTIVATED FIELD.

PLAN VIEW

(SHOW A MINIMUM OF THREE REFERENCE TIES TO DURABLE PHYSICAL OBJECTS, RELEVANT MONUMENTS AND PHYSICAL
CONDITIONS THAT WILL ENABLE RECOVERY OF THE CORNER.)HELLAND ENGINEERING & SURVEYING, LTD.
1107 Technology Parkway
Cedar Falls, Iowa 50613-6951
(319)-266-0161

(00.0') - RECORDED AS

FILE NAME: 03-147C4.DRG

I hereby certify that this land surveying document was prepared
and the related survey work was performed by me or under my
direct personal supervision and that I am a duly licensed Land
Surveyor under the laws of the State of Iowa.*Paul H. Helland 3/28/03*
Paul H. Helland
License Number 6505
My license renewal date is December 31, 2003.
All pages or sheets are covered by this seal except:

LIST CORNERS TO BE INDEXED

CORNER	SECTION	TOWNSHIP	RANGE
NE CORNER	12	89N	11W
NE CORNER SE 1/4 NE 1/4	12	89N	11W