

BLACK HAWK COUNTY ENGINEERS OFFICE

PREPARED BY: BLACK HAWK COUNTY ENGINEERS OFFICE  
316 E. FIFTH STREET, ROOM 211 WATERLOO, IOWA 50703

PH.# (319) 833-3008 SLSI 9-94  
FAX.# (319) 833-3139 CERT 12-96

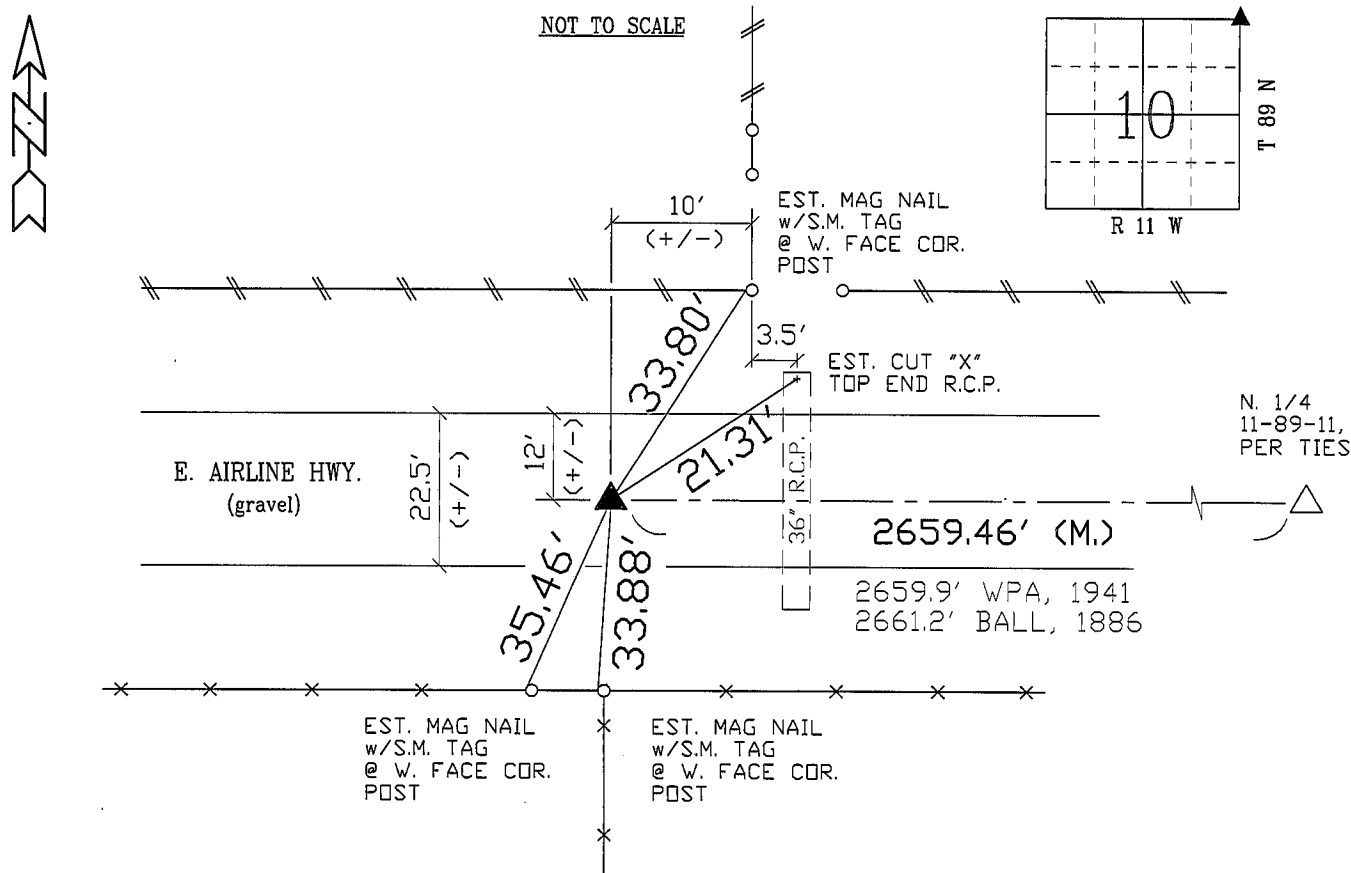
UNITED STATES PUBLIC LAND SURVEY CORNER CERTIFICATE OF  
Land Survey Monuments situated in Section 10, Township 89 N,  
Range 11 W, of the Fifth Principal Meridian, BLACK HAWK County, Iowa.  
Previously recorded in Misc. Book N/A, Page N/A, in County Recorder's Office.

(Show reason for preparing this certificate, the evidence and detailed procedures used in establishing the corner positions and monumentation found or placed.)

Monument Description and Remarks: FOUND BENT 40d SPIKE 18" DEEP @  
+/- WPA MEAS. FROM FND. N 1/4 SECT. 11-89-11 AND +/- EXIST. ROW SPLIT.  
TEMP. REF. LOCATION, THEN EXCAVATED 3' x 2' HOLE @ 2.5' DEEP.  
NO STD. WPA C.M. FOUND, NOR RECORD LIMESTONE. HELD 40d SPK. AS BEST  
EVIDENCE TO RECORD CORNER VS. DOUBLE PROPORTION. SET #5 RBR.x28"L.  
w/2" ALUM. CAP "B.H. CO. LAND COR." BEING +/- 1 FOOT E. OF FNC. LINE S.,  
AND +/- 10' W. OF FNC. LINE NORTH. SURVEY FOR ESTABLISHMENT OF  
N.E. COR, NW1/4-NW1/4 SECT. 11-T87-R11 FOR RICE ROAD.

PLAN - VIEW

(Show a minimum of three reference ties to durable physical objects, relevant monuments and physical conditions that will enable recovery of the corner.)



NOTE: ALL DISTANCES PLUMB  
S.M. = DENOTES "SURVEY MARKER" TAG (PLASTIC)

FIELD SURVEY: G.T. & C.W. 10/27/04  
PREPARED BY: G.T. & C.W. 11/05/04

CERTIFICATION



I hereby certify that this land surveying document was prepared and the related survey work was performed by me or under my direct personal supervision and that I am a duly licensed Land Surveyor under the laws of the State of Iowa.

*Geoffrey Allen Tinker* 11/05/04  
Geoffrey Allen Tinker (date)

License Number 15748

My license renewal date is December 31, 2004

Pages or sheets covered by this seal:  
This Land Corner Certificate Only.

LIST CORNERS TO BE INDEXED

Corner	Section	Township	Range
N.E. COR.	10	89 N	11 W
S.E. COR.	3	89 N	11 W
N.W. COR.	11	89 N	11 W
S.W. COR.	2	89 N	11 W