



Doc ID: 010071110001 Type: GEN  
 Recorded: 02/09/2021 at 10:10:44 AM  
 Fee Amt: \$7.00 Page 1 of 1  
 Black Hawk County Iowa  
 SANDIE L. SMITH RECORDER

File **2021-00016764**

Reserved for County Recorder's use.

Kyle J. Helland, 6109 Chancellor Drive, Cedar Falls, Iowa 50613-6916, (319)-266-0161

## UNITED STATES PUBLIC LAND SURVEY CORNER CERTIFICATE OF

LAND SURVEY MONUMENTS SITUATED IN SECTION NO. 9, TOWNSHIP NO. 89 NORTH, RANGE  
 NO. 11 WEST OF THE FIFTH PRINCIPAL MERIDIAN, BLACK HAWK COUNTY, IOWA.  
 PREVIOUSLY RECORDED IN BOOK 315 PAGE 557

(SHOW REASON FOR PREPARING THIS CERTIFICATE, THE EVIDENCE AND DETAILED PROCEDURES USED IN ESTABLISHING THE  
 CORNER POSITIONS AND MONUMENTATION FOUND OR PLACED.)

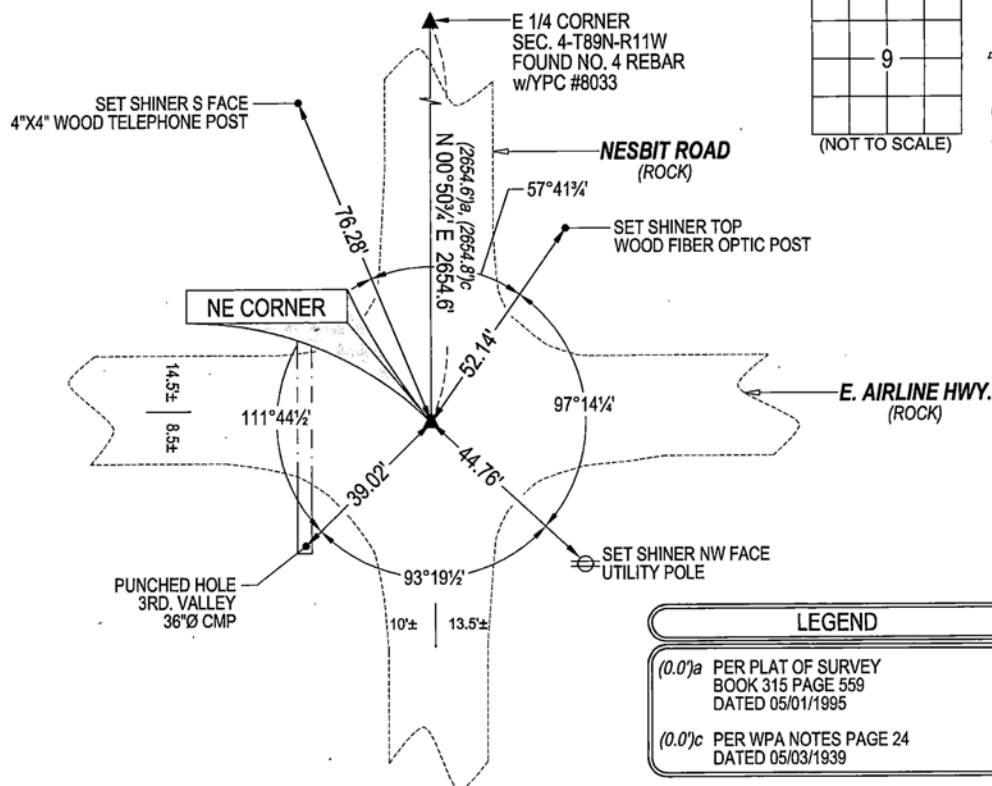
### MONUMENT DESCRIPTION AND REMARKS:

NO TIES REMAIN. SURVEY COMPLETED IN THE SE 1/4 OF SEC. 4-T89N-R11W.

→ **NE CORNER:** BLACK HAWK COUNTY ENGINEER TIES PAGE 23 (UNDATED) CALLS FOR [DUG AND FOUND N\*\*\*\*HEAD  
 17"x11"x11" ALSO IRON BAR 1/2" X 1/2" X 22" AND REMNANTS OF OLD OAK HUB ALSO OF OLD BRICK LOWERED EVIDENCE  
 AND SET C.M. ON TOP 12" UNDERGROUND]. BLACK HAWK COUNTY REFERENCE TIES DATED 05/01/1995 CALLS FOR [3/4"  
 IRON PIN]. USPLSCC BOOK 315 PAGE 557 DATED 05/01/1995 CALLS FOR [FOUND 3/4"Ø IRON PIN 6" DEEP IN GRAVEL  
 ROAD AT INTERSECTION NESBIT & EAST AIRLINE HWY. USING CES TIES OF 1976.] SEARCHED AREA, EXCAVATED, AND  
 FOUND 3/4"Ø SMOOTH PIN 0.5' DEEP.

### PLAN VIEW

(SHOW A MINIMUM OF THREE REFERENCE TIES TO DURABLE PHYSICAL OBJECTS, RELEVANT MONUMENTS AND PHYSICAL  
 CONDITIONS THAT WILL ENABLE RECOVERY OF THE CORNER.)



(BEARINGS ARE ASSUMED)



### HELLAND ENGINEERING & SURVEYING, LTD.

6109 Chancellor Drive  
 Cedar Falls, Iowa 50613-6916  
 (319)-266-0161

BRASS TAG = 4d. NAIL & 13/16"Ø BRASS TAG DRAWN BY: KDA  
 SHINER = 1"Ø STEEL SHINER w/MASONRY NAIL  
 OPC = PLASTIC CAP (O=ORANGE, R=RED, Y=YELLOW)  
 (00') RECORDED AS FILE NAME: 21-109-23.DWG



I hereby certify that this land surveying document was prepared  
 and the related survey work was performed by me or under my  
 direct personal supervision and that I am a duly licensed  
 Professional Land Surveyor under the laws of the State of Iowa.

*Kyle J. Helland*  
 Kyle J. Helland  
 License Number 23212  
 My license renewal date is December 31, 2021.  
 All pages or sheets are covered by this seal except:

### LIST CORNERS TO BE INDEXED

CORNER	SECTION	TOWNSHIP	RANGE
NE CORNER	9	89N	11W
SE CORNER	4	89N	11W
SW CORNER	3	89N	11W
NW CORNER	10	89N	11W

File Number **2021-00016764** Seq. 1