

SC
MISC
INDEX
MARGIN
PROOF
COMPARE

BLACK HAWK COUNTY IOWA:SS
FILED FOR RECORD APRIL 8, 1998 AT
4:00 P.M. AND RECORDED IN BOOK 329
OF MISC PAGE 643
Patricia J. Liss RECORDER
FEE N/C
BLACK HAWK COUNTY ENGINEERS OFFICE

20287

PREPARED BY: BLACK HAWK COUNTY ENGINEERS OFFICE PH# (319) 291-2419 SLSI 9-94
316 E. FIFTH STREET, ROOM 211 WATERLOO, IOWA 50703 FAX# (319) 291-2461 CERT 12-96

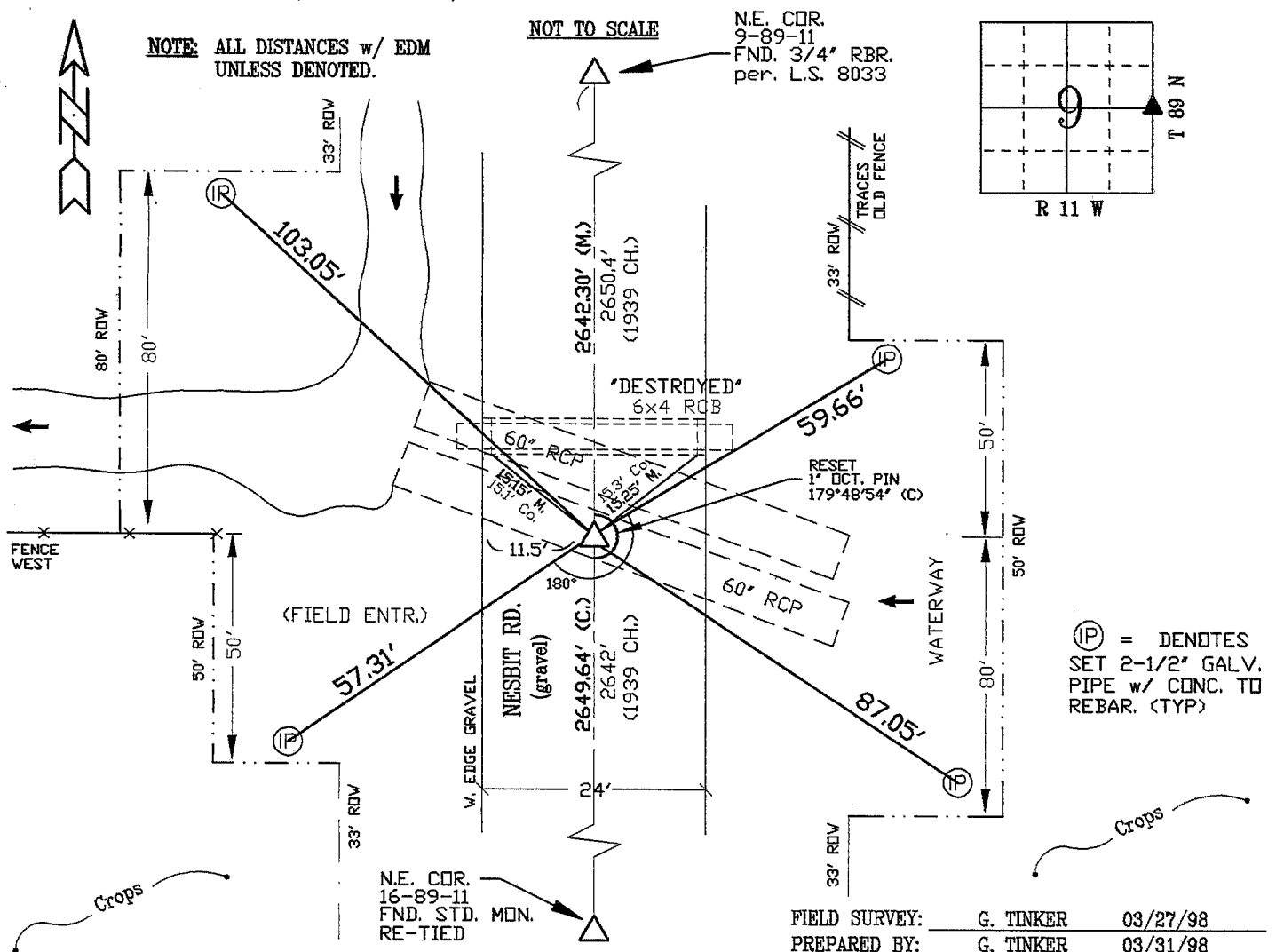
UNITED STATES PUBLIC LAND SURVEY CORNER CERTIFICATE OF
Land Survey Monuments situated in Section 9, Township 89 N,
Range 11 W, of the Fifth Principal Meridian, BLACK HAWK County, Iowa.
Previously recorded in Misc. Book N/A, Page N/A, in County Recorder's Office.

(Show reason for preparing this certificate, the evidence and detailed procedures used in establishing the corner positions and monumentation found or placed.)

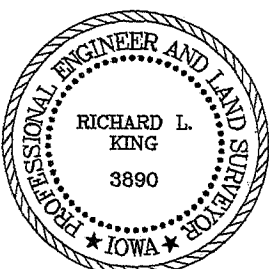
Monument Description and Remarks: FOUND 1" DIA. OCTAGON SHAPED PIN
LOC. 2" DEEP. EXIST. COUNTY TIES OF 1936/1939 CALL FOR 1/2" IRON BAR
@ C.M. 12" DEEP. TIES TO EXIST. RCB N. AGREE. EST. NEW TIES AND REF'ED
FND. 1" PIN, DUG TO FND CONC. MON. 2' DEEP. FND. MON. LOC. = FND 1" PIN.
ALL REMOVED FOR NEW 60" RCP - RE-SET FND 1" PIN x 18" L. @ 3" Dp.
RECOVERED TO EST. SECT. LINE FOR R.O.W. PURCH. AND NEW 60" RCP @ COR.

PLAN - VIEW

(Show a minimum of three reference ties to durable physical objects, relevant monuments and physical conditions that will enable recovery of the corner.)



CERTIFICATION



I hereby certify that this land surveying document was prepared and the related survey work was performed by me or under my direct personal supervision and that I am a duly licensed Land Surveyor under the laws of the State of Iowa.

Richard L. King 4/7/98
Richard L. King (date)

License Number 3890

My license renewal date is December 31, 1999

Pages or sheets covered by this seal:

This Land Corner Certificate Only.

LIST CORNERS TO BE INDEXED

Corner	Section	Township	Range
E. 1/4	9	89 N	11 W