

2024-24918
RECORDED: 12/17/2024 08:26:25 AM
RECORDING FEE: \$7.00
IOWA E-FILING FEE: \$3.13
COMBINED FEE: \$10.13
REVENUE TAX: \$0.00
SANDIE L. SMITH, RECORDER
BLACK HAWK COUNTY, IOWA

Prepared / Return To: Matthew A. Kofa, P.L.S., VJ Engineering, 1501 Technology Parkway, Suite 100, Cedar Falls, Iowa, 50613, (319) 266-5829

United States Public Land Survey Corner Certificate of

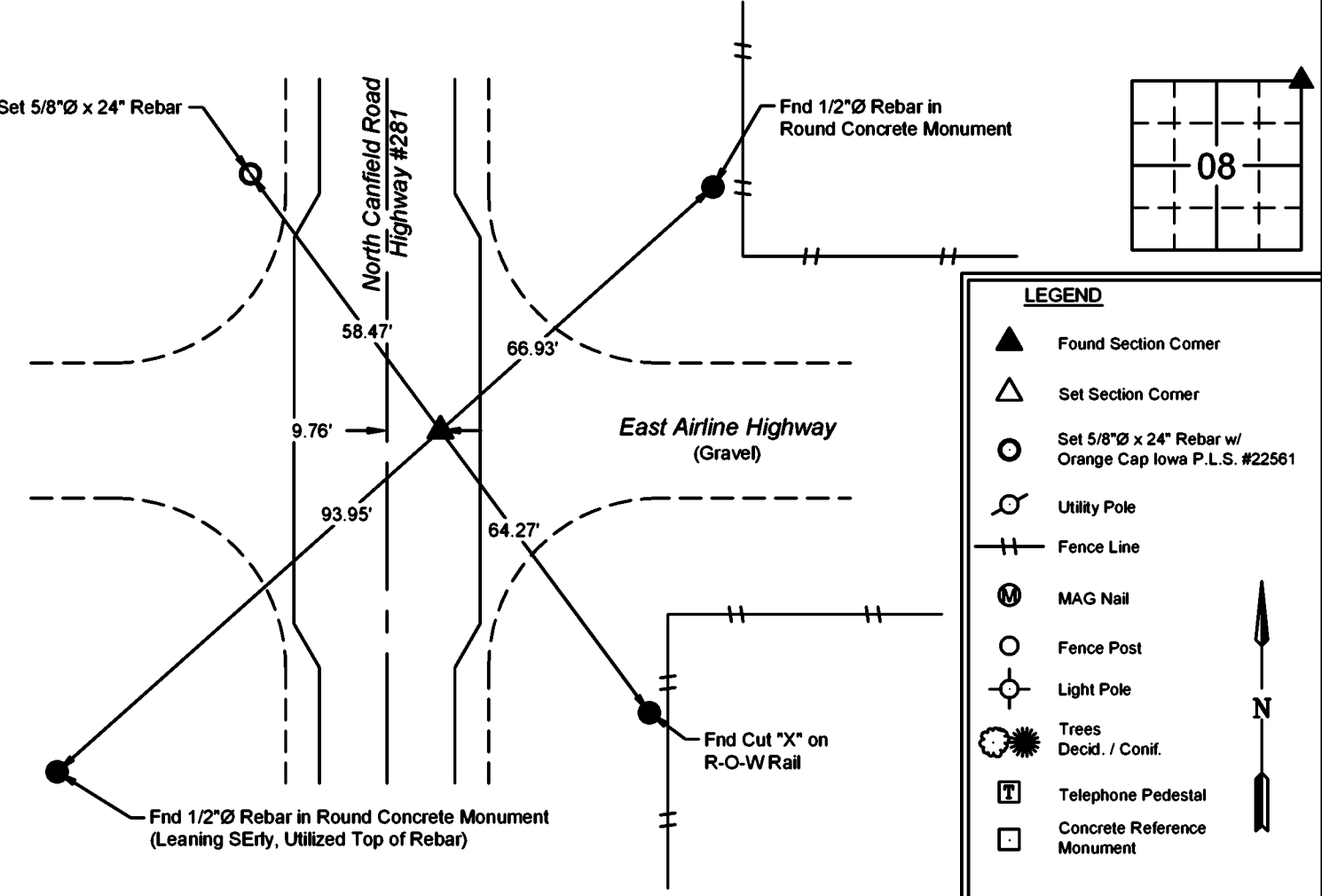
Land Survey Monuments situated in Section No. 08 , Township No. 89 North ,
Range No. 11 West , of the Fifth Principal Meridian, Black Hawk County, Iowa
Previously recorded in Document No. File No. 2009-18351

Show reason for preparing this certificate, the evidence and detailed procedures used in establishing the corner positions and monumentation found or placed.

Monument Description and Remarks: Northeast Corner -- Section 08-T89N-R11W
Previous corner certificate states that a Cotton Gin Spike is at the corner. Searched area as indicated and found a 1/2"Ø Iron Bar at the corner.
Found 1/2"Ø Iron Bar checked with remaining ties, used found 1/2"Ø Iron Bar as the corner. This corner certificate is being prepared due to a
change in the monument of record and to update the reference ties.

PLAN - VIEW

(Show a minimum of three reference ties to durable physical objects, relevant monuments and physical conditions that will enable recovery of the corner.)



I hereby certify that this land surveying document was prepared and the related survey work was performed by me or under my direct personal supervision and that I am a duly licensed Land Surveyor under the laws of the State of Iowa.

Matthew A. Kofa, P.L.S.

12/16/24

License Number 22561 Date

My license renewal date is December 31, 2026

Pages or sheets covered by this seal: 1 of 1

List Corner to be Indexed

Corner	Section	Twp	Range
Northeast	08	89N	11W
Southeast	05	89N	11W
Southwest	04	89N	11W
Northwest	09	89N	11W



VJ Engineering
1501 Technology Parkway
Cedar Falls, Iowa - 319-266-5829

Section Corner
Reference Ties

file no.
248108
drawn by
MAK
date
12/16/24