

*Jeffrey P. Helland, 1107 Technology Parkway, Cedar Falls, Iowa 50613-6951, (319)-266-0161

LAND SURVEY MONUMENTS SITUATED IN SECTION NO. 8, TOWNSHIP NO. 89 NORTH, RANGE
NO. 11 WEST OF THE FIFTH PRINCIPAL MERIDIAN, BLACK HAWK COUNTY, IOWA.
PREVIOUSLY RECORDED IN N/A

(SHOW REASON FOR PREPARING THIS CERTIFICATE, THE EVIDENCE AND DETAILED PROCEDURES USED IN ESTABLISHING THE CORNER POSITIONS AND MONUMENTATION FOUND OR PLACED.)

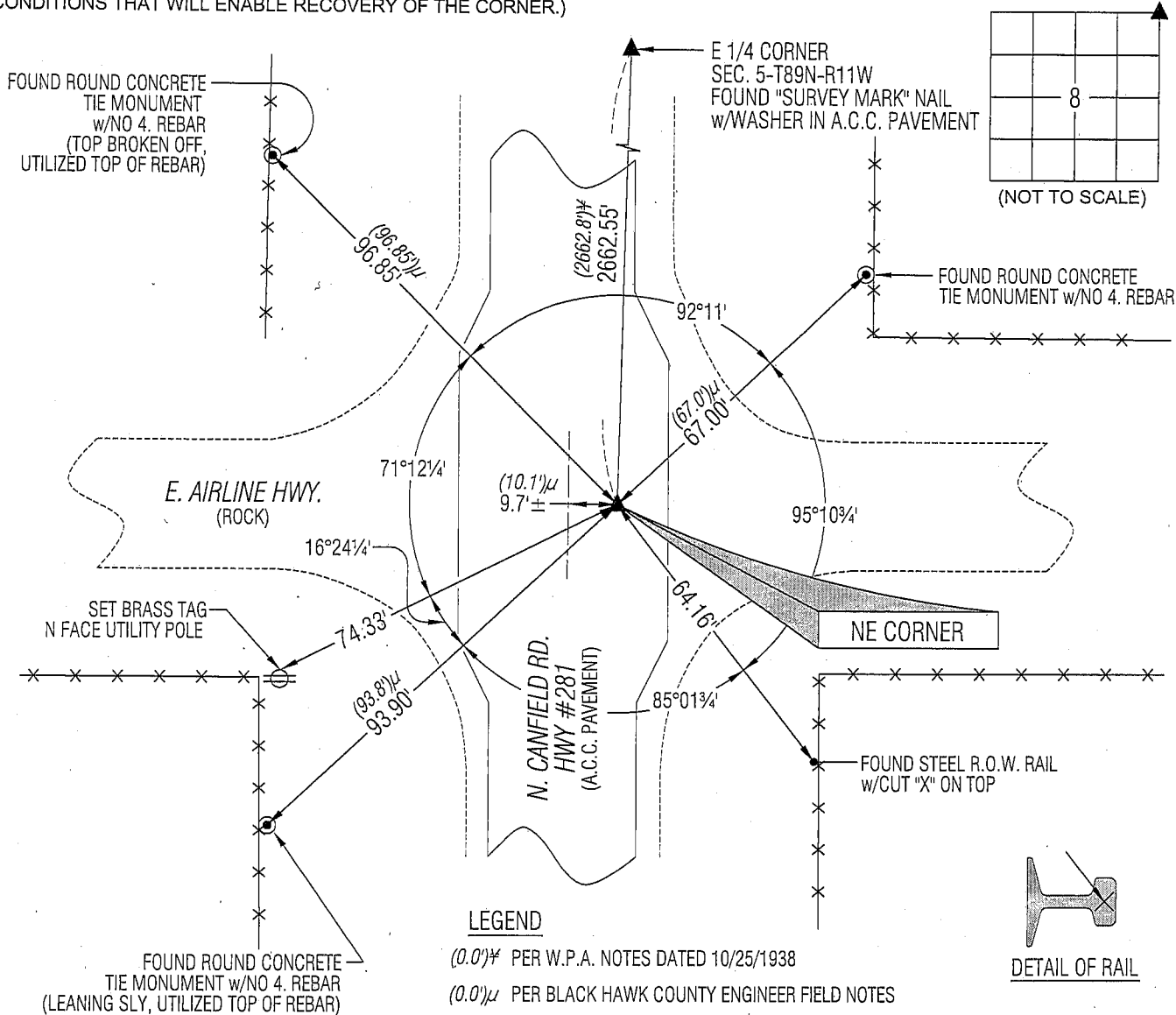
MONUMENT DESCRIPTION AND REMARKS:

NO USPLSCC ON FILE. SURVEY COMPLETED IN PART OF NW 1/4 & PART OF THE SW 1/4 OF SEC. 4-T89N-R11W.

→ **NE CORNER:** W.P.A. NOTES DATED 10/25/1938 CALLS FOR [DUG AND FOUND LIMESTONE 16"x9"x6". LOWERED EVIDENCE AND SET C.M. ON TOP 12" UNDERGROUND.]. BLACK HAWK COUNTY ENGINEER FIELD NOTES CALLS FOR [MON. UNDER EDGE OF SLAB 2' DEEP] & SHOWS THE CORNER BEING 10.1' EAST OF CL HIGHWAY. FOUND THREE REFERENCE TIES OF RECORD, PULLED DISTANCES AND SEARCHED AT INTERSECTION. FOUND NOTHING. SET "COTTON GIN SPIKE" IN A.C.C. PAVEMENT AT INTERSECTION OF TWO NORTHERLY REMAINING REFERENCE TIES. (CM TO SOUTHWEST WAS LEANING SLY.) SET CORNER IS 9.7'± EAST OF APPARENT CL JOINT HIGHWAY.

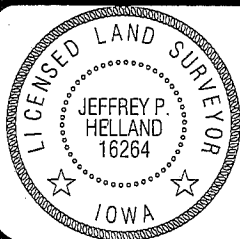
PLAN VIEW

(SHOW A MINIMUM OF THREE REFERENCE TIES TO DURABLE PHYSICAL OBJECTS, RELEVANT MONUMENTS AND PHYSICAL CONDITIONS THAT WILL ENABLE RECOVERY OF THE CORNER.)



HELLAND ENGINEERING & SURVEYING, LTD.
1107 Technology Parkway
Cedar Falls, Iowa 50613-6951
(319)-266-0161

SHINER = 8D NAIL & 1 5/16"Ø METAL SHINER
BRASS TAG = 13/16"Ø BRASS TAG
OPC = PLASTIC CAP (O=ORANGE, R=RED, Y=YELLOW)
(00) RECORDED AS FILE NAME: 08-318C1.DWG



I hereby certify that this land surveying document was prepared and the related survey work was performed by me or under my direct personal supervision and that I am a duly licensed Land Surveyor under the laws of the State of Iowa.

Jeffrey P. Holland 3/2/09
 License Number 16264
 My license renewal date is December 31, 2009.
 All pages or sheets are covered by this seal except:

LIST CORNERS TO BE INDEXED

CORNER	SECTION	TOWNSHIP	RANGE
NE CORNER	8	89N	11W
SE CORNER	5	89N	11W
SW CORNER	4	89N	11W
NW CORNER	9	89N	11W

93
4/109
\$1400 rank

Rec