

Paul H. Helland, 1107 Technology Parkway, Cedar Falls, Iowa 50613-6951, (319)-266-0161

UNITED STATES PUBLIC LAND SURVEY CORNER CERTIFICATE
OF

LAND SURVEY MONUMENTS SITUATED IN SECTION NO. 7, TOWNSHIP NO. 89 NORTH, RANGE
NO. 11 WEST OF THE FIFTH PRINCIPAL MERIDIAN, BLACK HAWK COUNTY, IOWA.
PREVIOUSLY RECORDED IN NW CORNER - 319 MISC. 881

(SHOW REASON FOR PREPARING THIS CERTIFICATE, THE EVIDENCE AND DETAILED PROCEDURES USED IN ESTABLISHING THE
CORNER POSITIONS AND MONUMENTATION FOUND OR PLACED.)

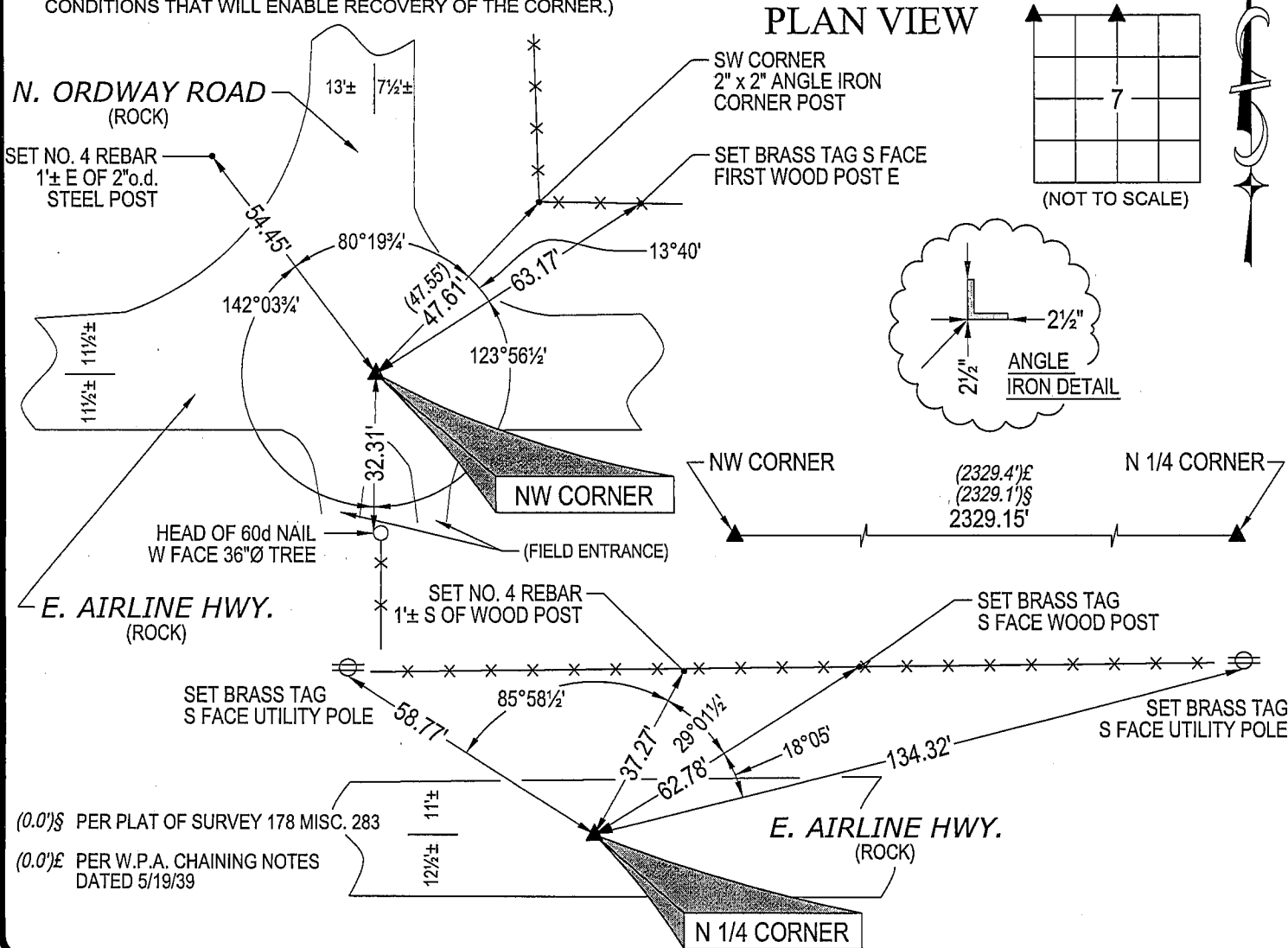
MONUMENT DESCRIPTION AND REMARKS:

MONUMENTATION AND REFERENCE TIES HAVE CHANGED FROM USPLSCC ON FILE FOR NW CORNER. NO
USPLSCC ON FILE FOR N 1/4 CORNER. SURVEY COMPLETED IN THE NW FRL 1/4 OF SEC. 7-T89N-R11W.

NW CORNER: W.P.A. CHAINING NOTES DATED 5/19/39 CALLS FOR [FOUND IRON BAR 1/2" X 27" LONG. SET C.M. 12"
DEEP. PLAT OF SURVEY 178 MISC. 283 (NO DATE) CALLS FOR [FOUND MONUMENT]. USPLSCC 319 MISC. 881
DATED 3/11/95 CALLS FOR [FOUND NAIL 0.4' DEEP]. FOUND 60d SPIKE 0.2' DEEP. TIED OUT, REMOVED, AND
FOUND NO. 6 REBAR 0.4' DEEP. TIED OUT, REMOVED NO. 6 REBAR AND FOUND A STD. CONCRETE MONUMENT 1.5'
DEEP. SAID NO. 6 WAS POSITIONED OVER STD. CONCRETE MONUMENT. RESET SAID NO. 6 REBAR (1' LONG)
DIRECTLY ON TOP OF STD. CONCRETE MONUMENT.

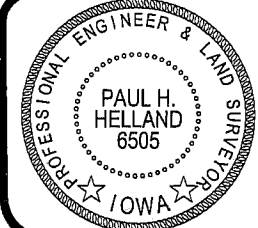
N 1/4 CORNER: BLACK HAWK COUNTY ENGINEER REFERENCE TIES CALLS FOR [S.C.M.]. FOUND NO. 5 REBAR
FLUSH IN ROCK SURFACE. TIED OUT AND REMOVED SAID NO. 5 REBAR. PROBED TO A DEPTH OF 2.3' DEEP AND
HIT A STD. CONCRETE MONUMENT. RESET SAID NO. 5 REBAR (1.35' LONG), NOW BEING 0.2' DEEP, IN ORIGINAL
POSITION ABOVE S.C.M.

(SHOW A MINIMUM OF THREE REFERENCE TIES TO DURABLE PHYSICAL OBJECTS, RELEVANT MONUMENTS AND PHYSICAL
CONDITIONS THAT WILL ENABLE RECOVERY OF THE CORNER.)



HELLAND ENGINEERING & SURVEYING, LTD.
1107 Technology Parkway
Cedar Falls, Iowa 50613-6951
(319)-266-0161

SHINER = 8D NAIL & 1 5/16" Ø METAL SHINER
BRASS TAG = 13/16" Ø BRASS TAG
OPC = PLASTIC CAP (O=ORANGE, R=RED, Y=YELLOW)
(00') RECORDED AS FILE NAME: 07-233C1.DWG



I hereby certify that this land surveying document was prepared
and the related survey work was performed by me or under my
direct personal supervision and that I am a duly licensed Land
Surveyor under the laws of the State of Iowa.
Paul H. Helland 9/25/07
Paul H. Helland
License Number 6505
My license renewal date is December 31, 2007.
All pages or sheets are covered by this seal except:

LIST CORNERS TO BE INDEXED			
CORNER	SECTION	TOWNSHIP	RANGE
NW CORNER	7	89N	11W
N 1/4 CORNER	7	89N	11W