

SC
MISC
INDEX
MARGIN
PROOF
COMPARE

BLACK HAWK COUNTY IOWA:SS
Filed for recorded Feb 10, 1999 at
2:00 P.M. and recorded in Book 333
of MISC Page 306.
Recorder
FEE n/c
ENGINEER'S OFFICE

18866

County Recorder

PREPARED BY: BLACK HAWK COUNTY ENGINEERS OFFICE
316 E. FIFTH STREET, ROOM 211 WATERLOO, IOWA 50703
PH.# (319) 833-3008
FAX.# (319) 833-3139
SLSI 9-94
CERT 12-96

UNITED STATES PUBLIC LAND SURVEY CORNER CERTIFICATE OF
Land Survey Monuments situated in Section 7, Township 89 N,
Range 11 W, of the Fifth Principal Meridian, BLACK HAWK County, Iowa.
Previously recorded in Misc. Book N/A, Page N/A, in County Recorder's Office.

(Show reason for preparing this certificate, the evidence and detailed procedures used in establishing the corner positions and monumentation found or placed.)

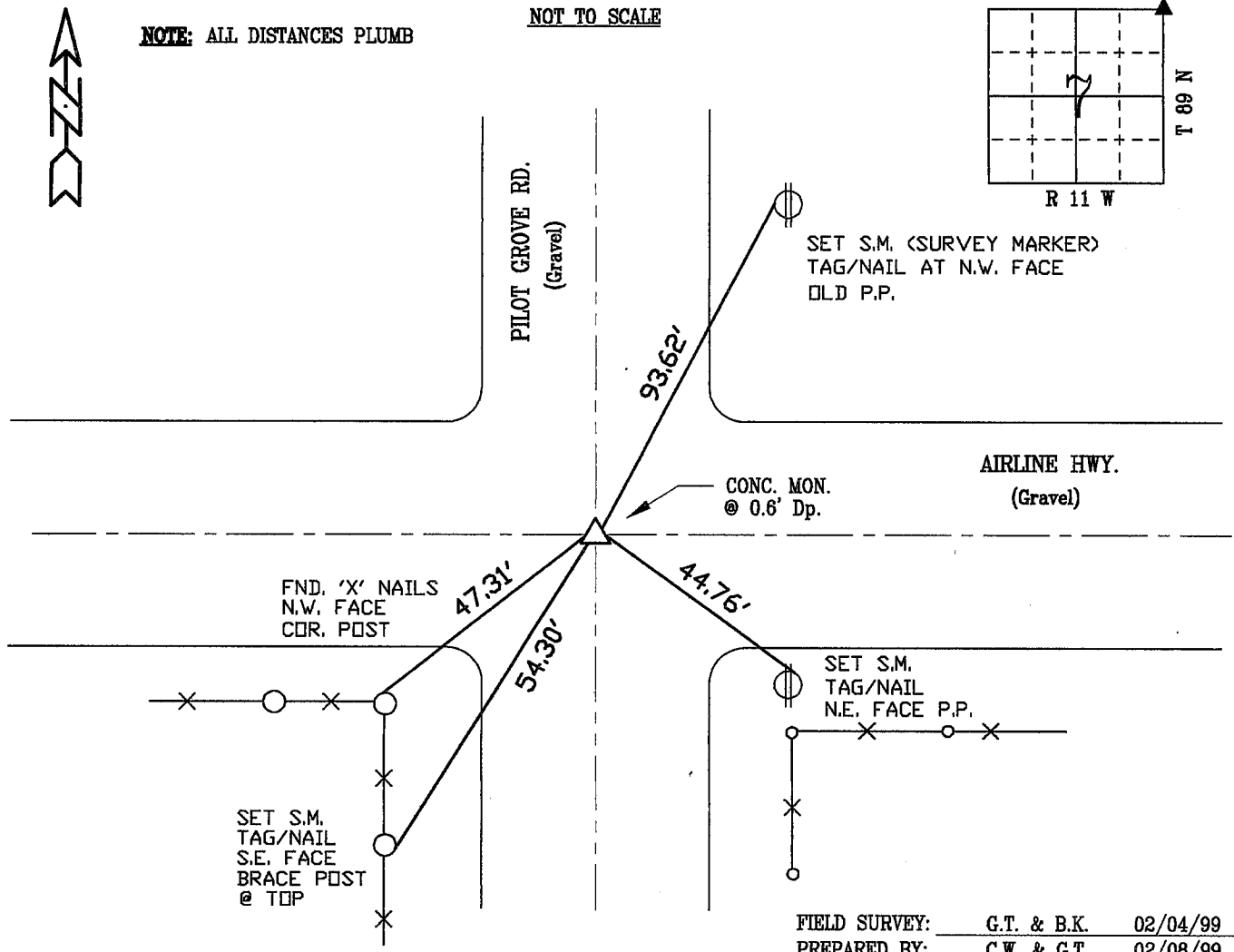
Monument Description and Remarks: FND. STD. CONC. MON. LOC. 0.6' DP. @
INTERSECTION OF AIRLINE HWY. AND PILOT GROVE ROAD, LOCATED BY
MAGNETIC LOCATION ON WEST SIDE OF CONC. MONUMENT.
CORNER LOCATED AND RE-TIED FOR BRIDGE SURVEY TO SOUTH ALONG PILOT
GROVE ROAD.

PLAN - VIEW

(Show a minimum of three reference ties to durable physical objects, relevant monuments and physical conditions that will enable recovery of the corner.)

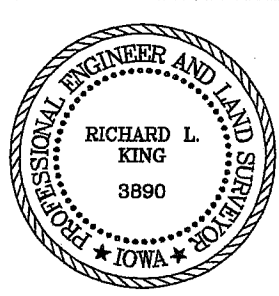
NOTE: ALL DISTANCES PLUMB

NOT TO SCALE



FIELD SURVEY: G.T. & B.K. 02/04/99
PREPARED BY: C.W. & G.T. 02/08/99

CERTIFICATION



I hereby certify that this land surveying document was prepared and the related survey work was performed by me or under my direct personal supervision and that I am a duly licensed Land Surveyor under the laws of the State of Iowa.
Richard L. King 2/9/99 (date)
License Number 3890
My license renewal date is December 31, 1999
Pages or sheets covered by this seal:
This Land Corner Certificate Only.

LIST CORNERS TO BE INDEXED

Corner	Section	Township	Range
N.E. COR.	7	89 N	11 W