

SC
MISC
INDEX *pg*
MARGIN
PROOF *✓*
COMPARE

BLACK HAWK COUNTY IOWA:SS
Filed for record Nov 3, 19 98 at
4:00 P.M. and recorded in Book 332
of MISC Page 163
Kirk D. Eschliman Recorder
FEE 1-5.00/
KIRK ESCHLIMAN
723 BROADWAY ST WATERLOO IA 50703

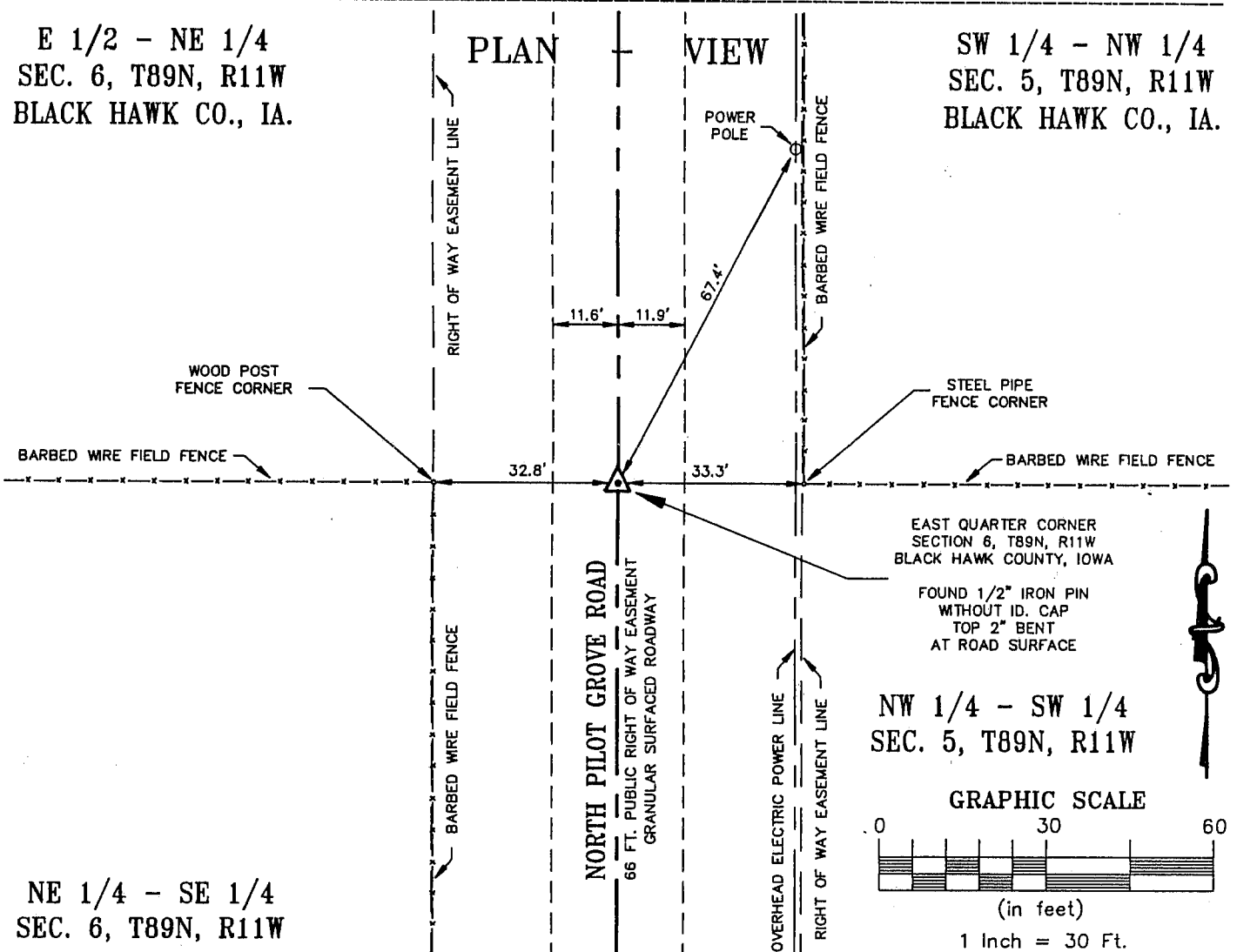
10572

Kirk D. Eschliman, P.L.S. Iowa Lic. No. 9961, 723 Broadway Street, Waterloo, Iowa 50703 - Phone: 319-234-0509

UNITED STATES PUBLIC LAND SURVEY CORNER CERTIFICATE OF

LAND SURVEY MONUMENTS SITUATED IN SECTION SIX (06), TOWNSHIP 89 NORTH
RANGE 11 WEST, OF THE FIFTH PRINCIPAL MERIDIAN, BLACK HAWK COUNTY, IOWA.
PREVIOUSLY RECORDED IN (NOT PREVIOUSLY RECORDED) (BOOK, PAGE, DOCUMENT NUMBER, ETC.) IN THE COUNTY RECORDER'S OFFICE.

(SHOW REASON FOR PREPARING THIS CERTIFICATE, THE EVIDENCE AND DETAILED PROCEDURES USED IN ESTABLISHING THE CORNER POSITIONS AND MONUMENTATION FOUND OR PLACED.)
MONUMENT DESCRIPTION AND REMARKS: FOUND 1/2" IRON PIN WITHOUT IDENTIFICATION CAP WITH TOP TWO (2)
INCHES BENT AT SURFACE OF GRANULAR ROADWAY, CURRENTLY NORTH
PILOT GROVE ROAD.



I HEREBY CERTIFY THAT THIS LAND SURVEYING DOCUMENT
WAS PREPARED BY ME OR UNDER MY DIRECT PERSONAL
SUPERVISION AND THAT I AM A DULY LICENSED LAND
SURVEYOR UNDER THE LAWS OF THE STATE OF IOWA.

Kirk D. Eschliman
DATE: 11/03/98
KIRK D. ESCHLIMAN, P.L.S. IOWA LIC. NO. 9961
MY LICENSE EXPIRATION DATE IS DECEMBER 31, 1999
PAGES OR SHEETS COVERED BY THIS SIGNATURE & SEAL: SHEET 1 OF 1

FOR: LEONA A. SCHARES
E 1/2, NE 1/4, SEC. 6, T89N, R11W
BLACK HAWK CO., IOWA

REQ. BY: DONNA SCHARES
DUNKERTON, IOWA



KESS & ASSOCIATES, INC.
PROFESSIONAL LAND SURVEYORS : 723 BROADWAY, WATERLOO, IOWA 50703-5811

DRAWN BY: K.D.E. REF.: BK.: PG.:
DATE: 11/02/98 C.A.D.D. FILE: 98B15CC2.DWG PROJECT NO.: 98B15

List of corners to be indexed:

Corners	Section	Township	Range
E 1/4	06	T89N	R11W

SECTION 6

