



Doc ID: 003723810001 Type: GEN
Recorded: 04/01/2009 at 08:34:58 AM
Fee Amt: \$7.00 Page 1 of 1
Instr# 200800022058
Black Hawk County Iowa
JUDITH A MCCARTHY RECORDER
Book 1080 Page 28451 - 28451
File **2009-00018352**

*Jeffrey P. Helland, 1107 Technology Parkway, Cedar Falls, Iowa 50613-6951, (319)-266-0161

UNITED STATES PUBLIC LAND SURVEY CORNER CERTIFICATE OF

LAND SURVEY MONUMENTS SITUATED IN SECTION NO. 5, TOWNSHIP NO. 89 NORTH, RANGE
NO. 11 WEST OF THE FIFTH PRINCIPAL MERIDIAN, BLACK HAWK COUNTY, IOWA.
PREVIOUSLY RECORDED IN N/A

(SHOW REASON FOR PREPARING THIS CERTIFICATE, THE EVIDENCE AND DETAILED PROCEDURES USED IN ESTABLISHING THE
CORNER POSITIONS AND MONUMENTATION FOUND OR PLACED.)

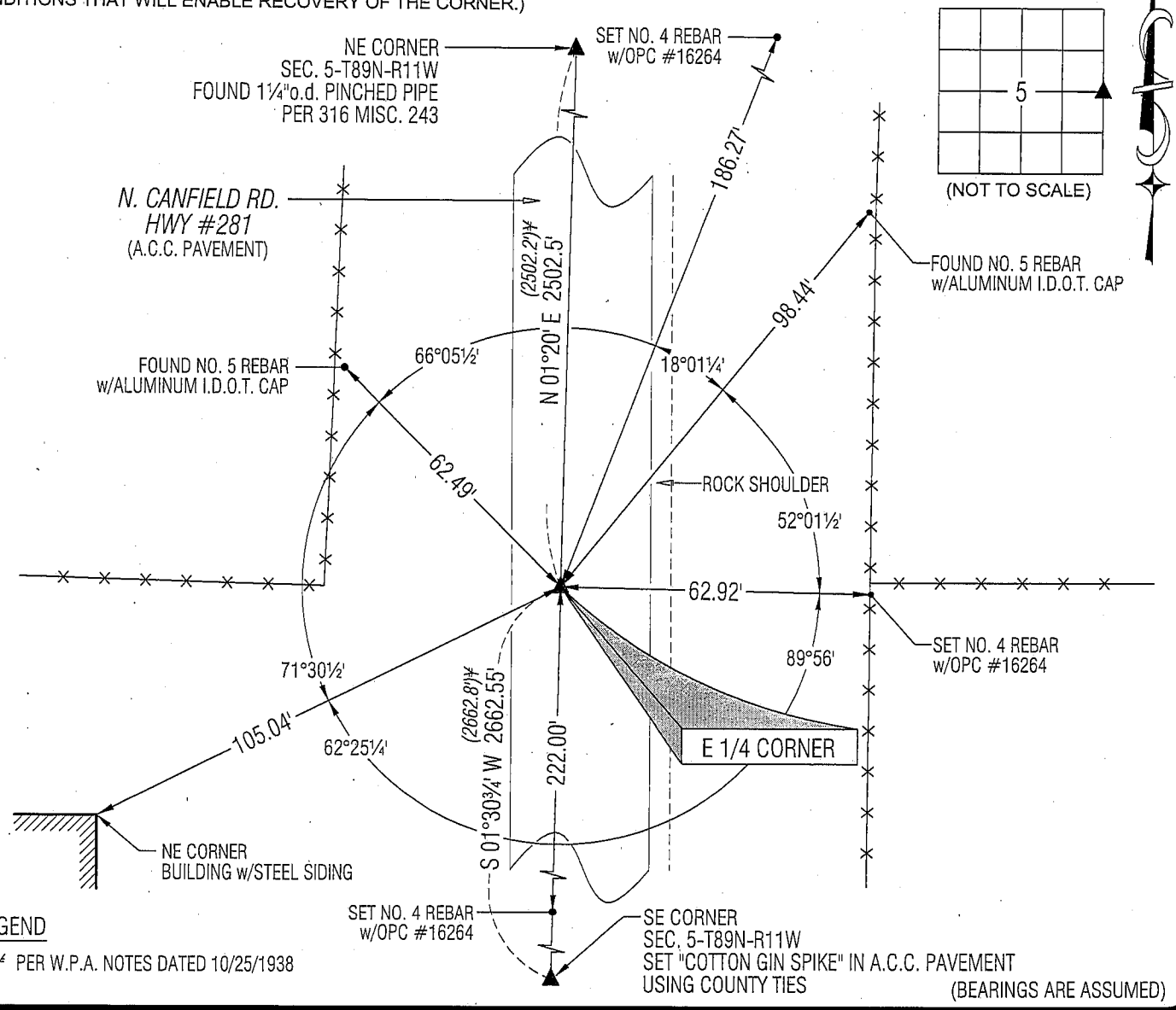
MONUMENT DESCRIPTION AND REMARKS:

NO USPLSCC ON FILE. SURVEY COMPLETED IN PART OF NW 1/4 & PART OF THE SW 1/4 OF SEC. 4-T89N-R11W.

→ **E 1/4 CORNER:** W.P.A. NOTES DATED 10/25/1938 CALLS FOR [DUG HOLE 12x12x4 FOUND NOTHING BUT PIECES OF
TWISTED WIRE 3" BELOW ORIGINAL....ESTABLISHED COR. BY SPLITTING R.O.W. FC'S AND PUTTING ON 1/4 FC. WEST & 1/4 FC.
VERY GOOD. RERUN 1/4 FC'S FROM CTR. SEC. 5 & CTR. SEC. 4 INDICATED POINT ESTABLISHED.]. BLACK HAWK COUNTY
ENGINEER TIES CALLS FOR [BRASS PLUG] AND [2.9' WEST OF STA. 188+25.0]. FOUND "SURVEY MARK" NAIL w/WASHER IN
A.C.C. PAVEMENT, SAID CORNER IS 3'± WEST OF APPARENT CENTERLINE JOINT & 10'± FROM WEST EDGE A.C.C.
PAVEMENT.

PLAN VIEW

(SHOW A MINIMUM OF THREE REFERENCE TIES TO DURABLE PHYSICAL OBJECTS, RELEVANT MONUMENTS AND PHYSICAL
CONDITIONS THAT WILL ENABLE RECOVERY OF THE CORNER.)



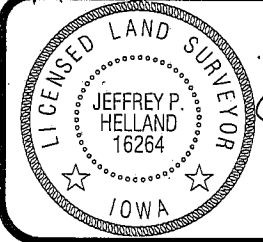
LEGEND

(0.0)± PER W.P.A. NOTES DATED 10/25/1938



HELLAND ENGINEERING & SURVEYING, LTD.
1107 Technology Parkway
Cedar Falls, Iowa 50613-6951
(319)-266-0161

SHINER = 8D NAIL & 1 5/16"Ø METAL SHINER
BRASS TAG = 13/16"Ø BRASS TAG
OPC = PLASTIC CAP (O=ORANGE, R=RED, Y=YELLOW)
(00) RECORDED AS FILE NAME: 08-318C2.DWG



I hereby certify that this land surveying document was prepared
and the related survey work was performed by me or under my
direct personal supervision and that I am a duly licensed Land
Surveyor under the laws of the State of Iowa.
Jeffrey P. Helland 3/2/09
Jeffrey P. Helland
License Number 16264
My license renewal date is December 31, 2009.
All pages or sheets are covered by this seal except:

LIST CORNERS TO BE INDEXED			
CORNER	SECTION	TOWNSHIP	RANGE
E 1/4 CORNER	5	89N	11W
W 1/4 CORNER	4	89N	11W

Rec