

LAND SURVEY CORNER CERTIFICATE

OF

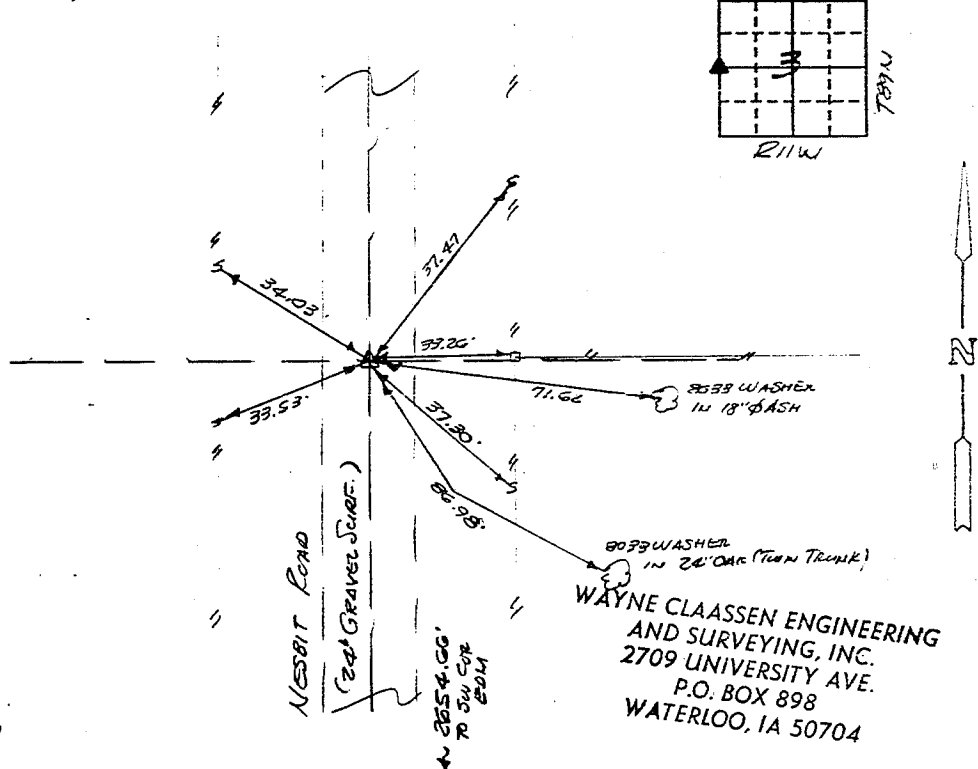
Land Survey Monuments situated in Section 3, Township 89N, Range 11W,
County, Iowa.
Previously recorded in N/A in County Recorder's Office.

(Show reason for preparing this certificate, the evidence and detailed procedures used in establishing the corner positions and monumentation found or placed.)

Monument Description and Remarks: Found 30" 8' Deep in E NEBIT ROAD IN
LINE WITH FENCES TO EAST. SET 12" 6" PEGS ON NORTH EDGE OF MONUMENT
1" BROWN TOP & SET 12" X 26" REBAR OVER CENTER OF MON. W/ 8033 CAP. 2"
DEEP GRAVEL SURFACE

PLAN - VIEW

(Show a minimum of three reference ties to durable physical objects, relevant monuments and physical conditions that will enable recovery of the corner.)



410-29

I hereby certify that the survey work was completed and this certificate was prepared by me or under my direct personal supervision and that I am a duly registered land surveyor under the laws of the state of Iowa.

Signature: F. William King
Name typed or printed: F. WILLIAM KING
Date: 5-1-1993 Reg. No. 8033

SEAL



Corners	List Corners to be Indexed	Section	Twp	Range
W 1/4	3	89N	11W	