

Patricia A. Lee

BLACK HAWK COUNTY RECORDER

ENV ANDERSON BOGERT ENGINEERS & SURVEYORS INC 4001 RIVER RIDGE DR NE CEDAR RAPIDS IA 52402

SLSI 9-90

Prepared By: Leo D. Wooder, L.S. #14676 Anderson-Bogert Engineers & Surveyors, Inc.
4001 River Ridge Dr. N.E. Cedar Rapids, Iowa 52402 Phone: (319) 377-4629

UNITED STATES PUBLIC LAND SURVEY CORNER CERTIFICATE

OF

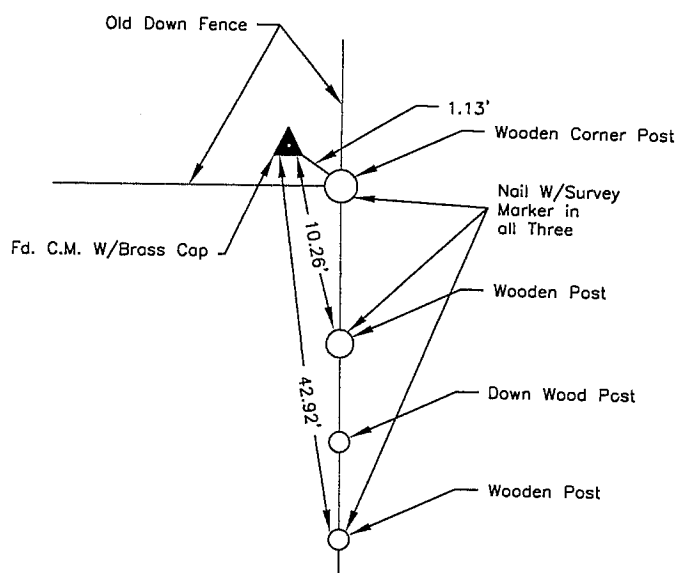
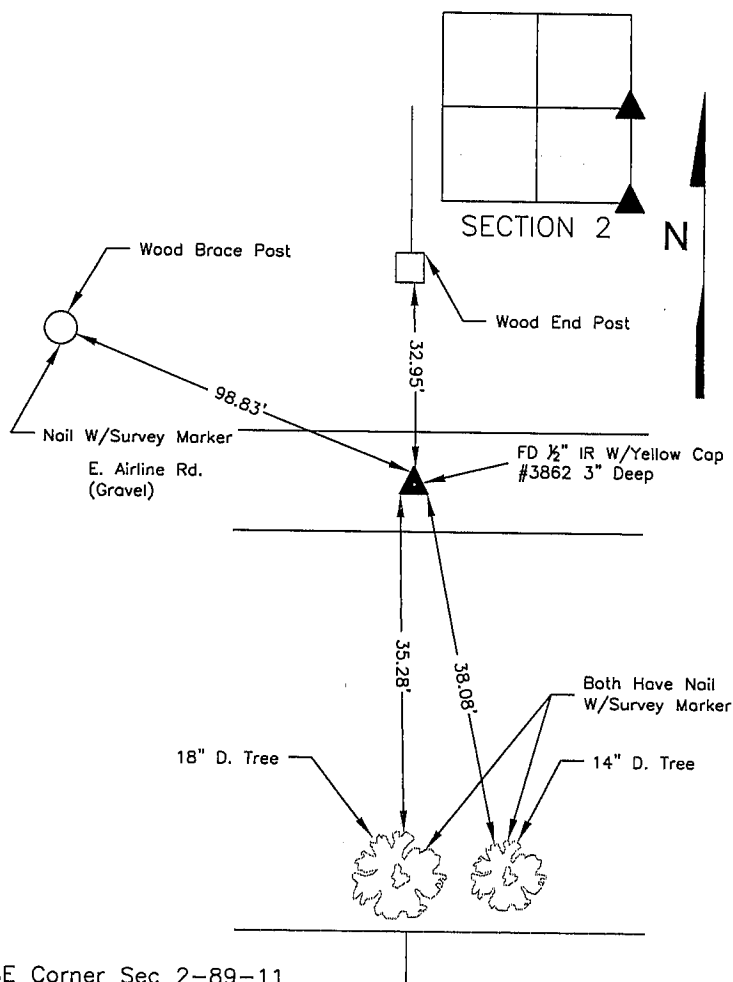
Land Survey Monuments situated in Section 2, Township 89 N, Range 11 W, of the Fifth Principal Meridian, BLACK HAWK County, Iowa.
Previously recorded in E $\frac{1}{4}$ Cor 2-89-11, SE Cor 2-89-11 Both Not Previously Recorded in County Recorders Office.
(book, page, document number, ect.)

(Show reason for preparing this certificate, the evidence and detailed procedures used in establishing the corner positions and monumentation found or placed.)

Monument Description and Remarks: E $\frac{1}{4}$ Cor 2-89-11 FD STD Conc Mon From Notes in County Engineers Office. FD for Survey Recorded in Fee Book #2005 13761. SE Cor 2-89-11 FD $\frac{1}{2}$ " IR W/ Yellow Cap #3862 in CL RD in Line of Fc to N. FD for Survey Recorded in Fee Book #2005 13761.

PLAN - VIEW

(Show a minimum of three reference ties to durable physical objects, relevant monuments and physical conditions that will enable recovery of the corner.)


E $\frac{1}{4}$ Corner Sec 2-89-11


SE Corner Sec 2-89-11

I hereby certify that this land surveying document was prepared and the related survey work was performed by me or under my direct personal supervision and that I am a duly licensed Land Surveyor under the laws of the State of Iowa

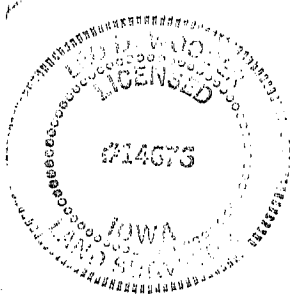
Signature: *Leo D. Wooder* Date: 12/27/2004
Printed or typed name: Leo D. Wooder

License number: #14676

My license renewal date is December 31, 2006

Pages or sheets covered by this seal: 1 of 1

SEAL



List Corners to be Indexed

| Corners | Section | Twp | Range |
|--------------|---------|------|-------|
| E 1/4 Corner | 2 | 89 N | 11 W |
| SE Cor | 2 | 89 N | 11 W |