

MISC
INDEX VS
MARGIN
PROOF of
COMPARE

FILED FOR RECORD Feb 20, 2001 AT 4:00 P. M., AND RECORDED IN BOOK 341 OF MISC PAGE 910
Paul H. Helland RECORDER
 FEE 1-5.00/
 PAUL HELLAND

Paul H. Helland, 1107 Technology Parkway, Cedar Falls, Iowa 50613-6951, (319)-266-0161

UNITED STATES PUBLIC LAND SURVEY CORNER CERTIFICATE OF

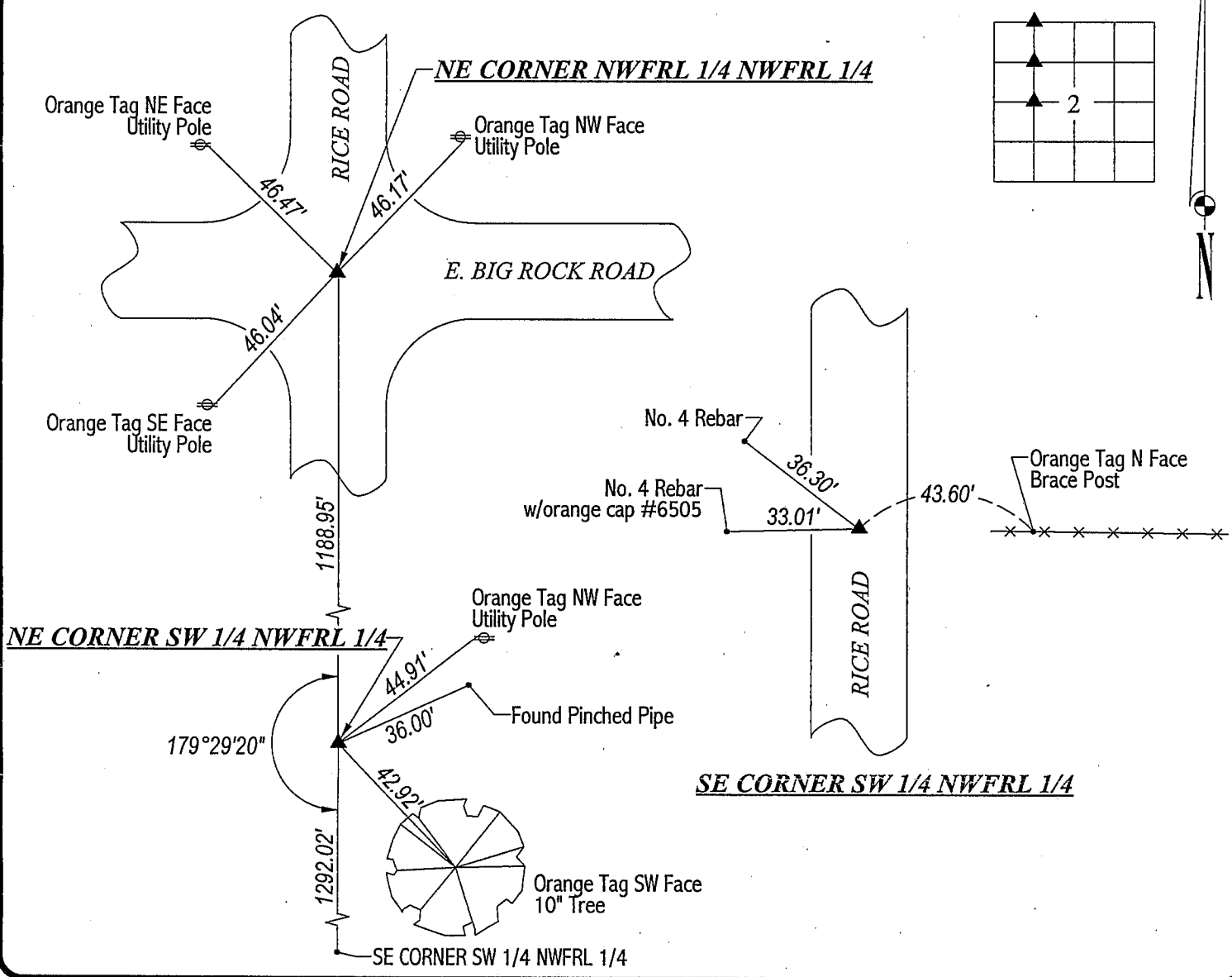
LAND SURVEY MONUMENTS SITUATED IN SECTION NO. 2, TOWNSHIP NO. 89 NORTH, RANGE NO. 11 WEST OF THE FIFTH PRINCIPAL MERIDIAN, BLACK HAWK COUNTY, IOWA.
 PREVIOUSLY RECORDED IN BOOK _____, PAGE _____.

(SHOW REASON FOR PREPARING THIS CERTIFICATE, THE EVIDENCE AND DETAILED PROCEDURES USED IN ESTABLISHING THE CORNER POSITIONS AND MONUMENTATION FOUND OR PLACED.)

MONUMENT DESCRIPTION AND REMARKS: SURVEY DONE IN WFRL 1/2 OF NWFRL 1/4 OF SEC. 2-T89N-R11W.
 NE CORNER of NWFRL 1/4 NWFRL 1/4: No county reference ties. Chaining Notes dated 5/3/1939 show no corner found or set. Found pinched pipe 0.5' deep.
 NE CORNER of SW 1/4 NWFRL 1/4: No county reference ties. Established using pinched pipe found on East R.O.W. line and prorated original government chaining distance between the NE corner of NWFRL 1/4 NWFRL 1/4 & a straight line between the W 1/4 corner and approximate Center. Set "Mag" nail.
 SE CORNER of SW 1/4 NWFRL 1/4: No county reference ties. Fence line to the West removed by Dennis Stickfort. He stated that the fence lined up with the fence running East. This fence intersection is 29' +/- North of a straight line between the W 1/4 corner and approximate Center. Set "Mag" nail 33.0' West of end post of fence running East and in line w/said fence.

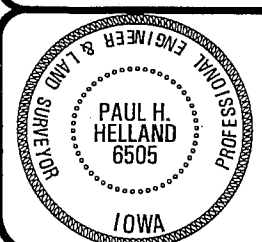
PLAN VIEW

(SHOW A MINIMUM OF THREE REFERENCE TIES TO DURABLE PHYSICAL OBJECTS, RELEVANT MONUMENTS AND PHYSICAL CONDITIONS THAT WILL ENABLE RECOVERY OF THE CORNER.)



HES HELLAND ENGINEERING & SURVEYING, LTD.
 1107 Technology Parkway
 Cedar Falls, Iowa 50613-6951
 (319)-266-0161

FILE NAME: 01-122C2.DRG



I hereby certify that this land surveying document was prepared and the related survey work was performed by me or under my direct personal supervision and that I am a duly licensed Land Surveyor under the laws of the State of Iowa.
Paul H. Helland 2/6/01
 Paul H. Helland
 License Number 6505
 My license renewal date is December 31, 2001.
 All pages or sheets are covered by this seal except:

LIST CORNERS TO BE INDEXED			
CORNER	SECTION	TOWNSHIP	RANGE
NE CORNER	2	89N	11W
NW 1/4 NW 1/4	NW 1/4 NW 1/4	89N	11W
NE CORNER	2	89N	11W
SW 1/4 NW 1/4	SW 1/4 NW 1/4	89N	11W
SE CORNER	2	89N	11W
SW 1/4 NW 1/4	SW 1/4 NW 1/4	89N	11W

Rec