

SC
MISC
INDEX VS
MARGIN
PROOF
COMPAR

FILED FOR RECORD Feb 20, 2001 AT 4000 P M., AND RECORDED IN BOOK 341 OF MISC PAGE 909
RECORDER
FEE 1-5.00x
PAUL HELLAND

Paul H. Helland, 1107 Technology Parkway, Cedar Falls, Iowa 50613-6951, (319)-266-0161

UNITED STATES PUBLIC LAND SURVEY CORNER CERTIFICATE OF

LAND SURVEY MONUMENTS SITUATED IN SECTION NO. 2, TOWNSHIP NO. 89 NORTH, RANGE NO. 11 WEST OF THE FIFTH PRINCIPAL MERIDIAN, BLACK HAWK COUNTY, IOWA.

PREVIOUSLY RECORDED IN BOOK, PAGE.

(SHOW REASON FOR PREPARING THIS CERTIFICATE, THE EVIDENCE AND DETAILED PROCEDURES USED IN ESTABLISHING THE CORNER POSITIONS AND MONUMENTATION FOUND OR PLACED.)

MONUMENT DESCRIPTION AND REMARKS:

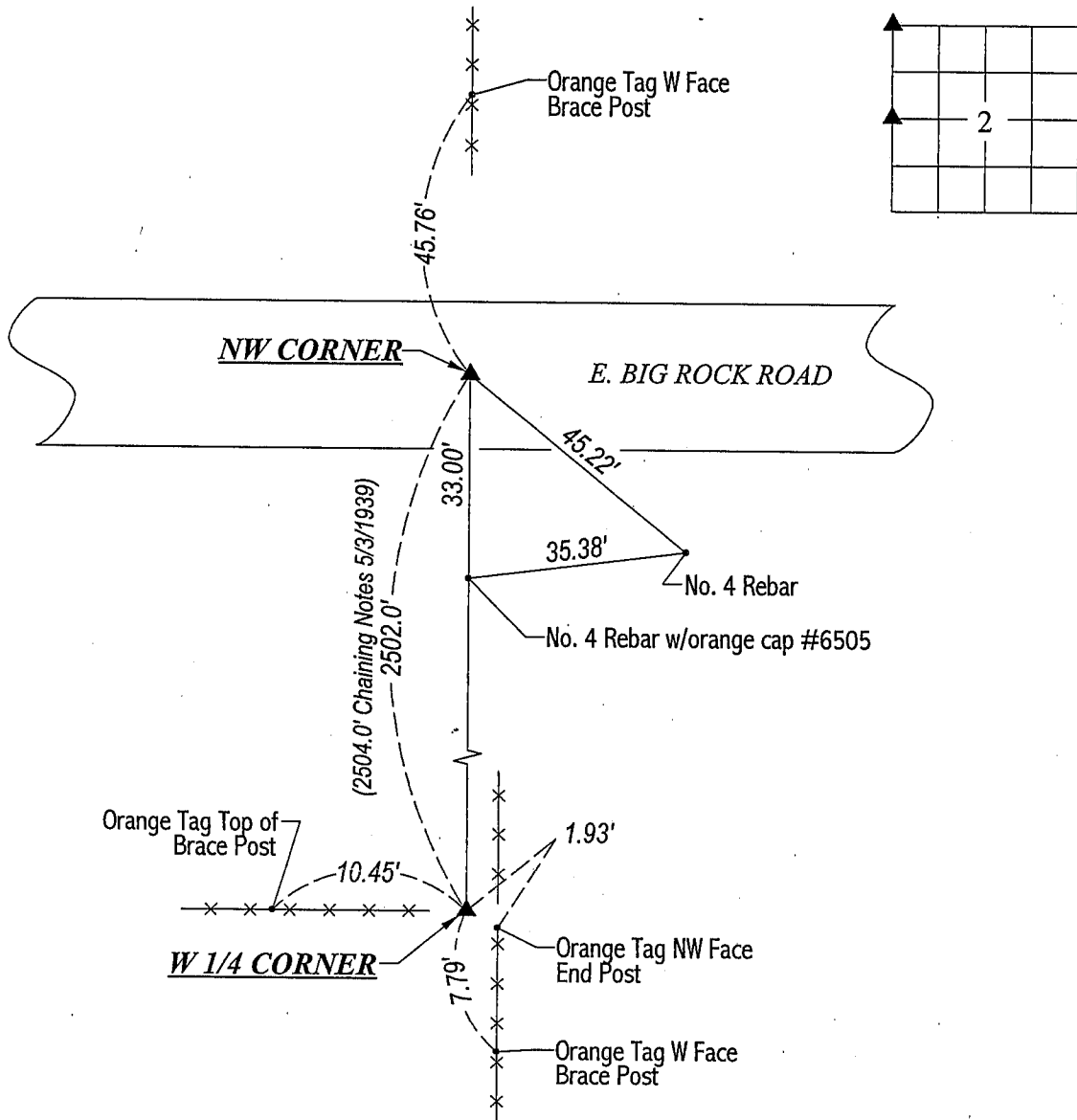
SURVEY DONE IN WFRL 1/2 OF NWRL 1/4 OF SEC. 2-T89N-R11W.

NW CORNER: Found No. 7 rebar per county reference ties. Top 3" of rebar bent Easterly. Unable to straighten and/or lower. Made punch mark on top of rebar above straight section of rebar.

W 1/4 CORNER: Found concrete monument w/brass cap "3+2" per county reference ties. Top 5" of C.M. broken off. Placed top of C.M. on base and reinforced w/No. 4 rebars on all 4 sides. Top of C.M. is 5.2' below top of end post to the S.E.

PLAN VIEW

(SHOW A MINIMUM OF THREE REFERENCE TIES TO DURABLE PHYSICAL OBJECTS, RELEVANT MONUMENTS AND PHYSICAL CONDITIONS THAT WILL ENABLE RECOVERY OF THE CORNER.)



HELLAND ENGINEERING & SURVEYING, LTD.
1107 Technology Parkway
Cedar Falls, Iowa 50613-6951
(319)-266-0161

FILE NAME: 01-122C1.DRG



I hereby certify that this land surveying document was prepared and the related survey work was performed by me or under my direct personal supervision and that I am a duly licensed Land Surveyor under the laws of the State of Iowa.

Paul H. Helland
License Number 6505
My license renewal date is December 31, 2001.
All pages or sheets are covered by this seal except:

LIST CORNERS TO BE INDEXED			
CORNER	SECTION	TOWNSHIP	RANGE
NW CORNER	2	89N	11W
W 1/4 CORNER	2	89N	11W