

SC
MISC
INDEX
MARGIN
PROOF
COMPARE

BLACK HAWK COUNTY:SS 045023
Filed for record JUN 2, 2000 at
4:00 P.M and recorded in Book 338
of MISC Page 639.
Christina L. Less Recorder
Fee 1-5.00/
BUSSEE SURVEYING INC BOX 241
ALLISON IA 50602

STEVE BUSSE P.O. BOX 241 508 ELM STREET ALLISON, IOWA 50602 319-267-2519

UNITED STATES PUBLIC LAND SURVEY CORNER CERTIFICATE

Land Survey Monuments situated in Section 35, Township 88 North, Range
14 West, of the Fifth Principal Meridian, Black Hawk County, Iowa.

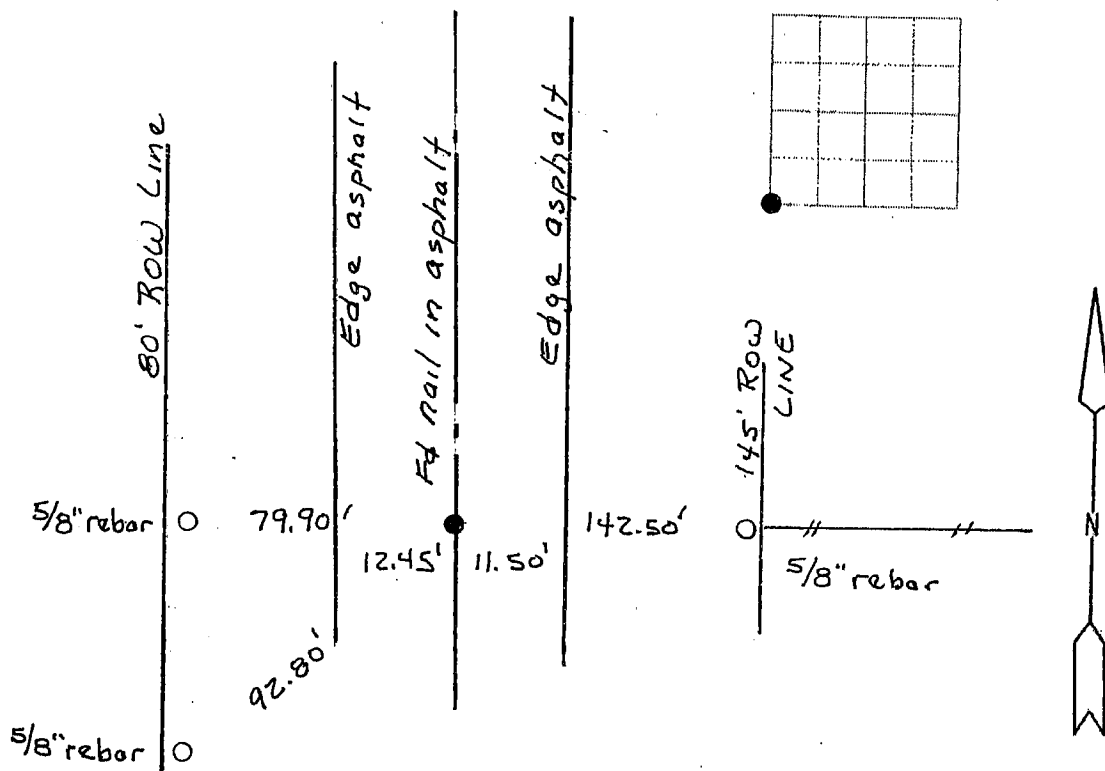
Previously recorded in N/A in County Recorder's Office.
(book, page, document number, etc.)

(Show reason for preparing this certificate, the evidence and detailed procedures used in establishing the corner positions and monumentation found or placed.)

Monument Description and Remarks: Found nail in asphalt near center
line of Highway # 63. On Fence line to East.

PLAN - VIEW

(Show a minimum of three reference ties to durable physical objects, relevant monuments and physical conditions that will enable recovery of the corner)



I hereby certify that the survey work was completed and this land surveying document was prepared by me or under my direct personal supervision and that I am a duly licensed land surveyor under the laws of the state of Iowa

Signature: Steve Busse
Name typed or printed STEVE BUSSE

Date: 5/24/00 Reg. No. 9018

My license renewal date is December 31, 2000

SEAL

Corners	Section	Twp	Range
SW COR	35	88	14