

Paul H. Helland, 1107 Technology Parkway, Cedar Falls, Iowa 50613-6951, (319)-266-0161

UNITED STATES PUBLIC LAND SURVEY CORNER CERTIFICATE OF

LAND SURVEY MONUMENTS SITUATED IN SECTION NO. 35, TOWNSHIP NO. 88 NORTH, RANGE
NO. 14 WEST OF THE FIFTH PRINCIPAL MERIDIAN, BLACK HAWK COUNTY, IOWA.
PREVIOUSLY RECORDED IN N/A

(SHOW REASON FOR PREPARING THIS CERTIFICATE, THE EVIDENCE AND DETAILED PROCEDURES USED IN ESTABLISHING THE
CORNER POSITIONS AND MONUMENTATION FOUND OR PLACED.)

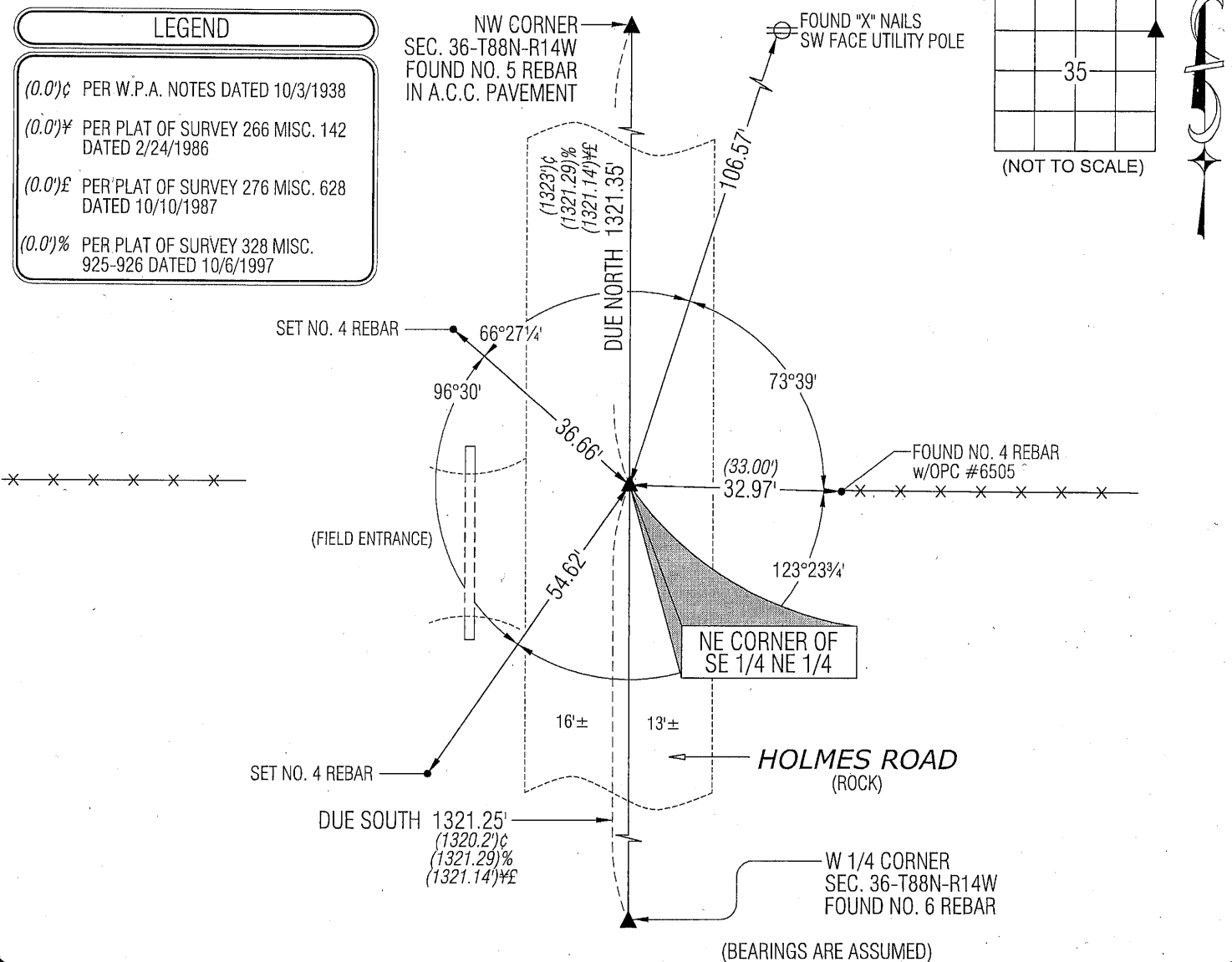
MONUMENT DESCRIPTION AND REMARKS:

NO USPLSCC ON FILE. SURVEY COMPLETED IN THE NW 1/4 OF SEC. 36-T88N-R14W.

→ NE CORNER SE 1/4 NE 1/4: NO BLACK HAWK COUNTY REFERENCE TIES AVAILABLE. SET NO. 4 REBAR w/OPC #6505 (0.2' DEEP) AT THE INTERSECTION OF A STRAIGHT LINE BETWEEN THE NE CORNER AND THE E 1/4 CORNER AND THE WESTERLY EXTENSION OF A LINE FROM THE NE CORNER SW 1/4 NW 1/4 TO A FOUND NO. 4 REBAR w/OPC #6505 AT THE EASTERLY R.O.W. OF HOLMES ROAD CORRESPONDING TO PLATS OF SURVEY DATED 2/24/1986 IN 266 MISC. 142 AND DATED 10/10/1987 IN 276 MISC. 628.

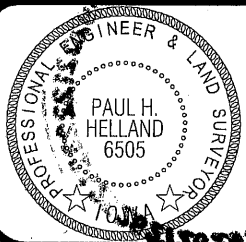
PLAN VIEW

(SHOW A MINIMUM OF THREE REFERENCE TIES TO DURABLE PHYSICAL OBJECTS, RELEVANT MONUMENTS AND PHYSICAL CONDITIONS THAT WILL ENABLE RECOVERY OF THE CORNER.)



HES HELLAND ENGINEERING & SURVEYING, LTD.
1107 Technology Parkway
Cedar Falls, Iowa 50613-6951
(319)-266-0161

SHINER = 8D NAIL & 1 5/16"Ø METAL SHINER
BRASS TAG = 13/16"Ø BRASS TAG
OPC = PLASTIC CAP (O=ORANGE, R=RED, Y=YELLOW)
(00') RECORDED AS FILE NAME: 09-153C1.DWG



I hereby certify that this land surveying document was prepared and the related survey work was performed by me or under my direct personal supervision and that I am a duly licensed Land Surveyor under the laws of the State of Iowa.

Paul H. Helland
License Number 6505
My license renewal date is December 31, 2009.
All pages or sheets are covered by this seal except:

LIST CORNERS TO BE INDEXED

CORNER	SECTION	TOWNSHIP	RANGE
NE CORNER SE 1/4 NE 1/4	35	88N	14W
SE CORNER NE 1/4 NE 1/4	35	88N	14W
SW CORNER NW 1/4 NW 1/4	36	88N	14W
NW CORNER SW 1/4 NW 1/4	36	88N	14W