

WAYNE CLAASSEN ENGINEERING AND SURVEYING, INC.  
P.O. BOX 898 WATERLOO, IOWA 50704-0898

PHONE: (VOICE) 319-235-6294  
(FAX) 319-235-0028

## UNITED STATES PUBLIC LAND SURVEY CORNER CERTIFICATE

Land Survey Monuments situated in Section 34, Township 88 North, Range 14 West, of the Fifth Principal Meridian, Black Hawk County, Iowa.

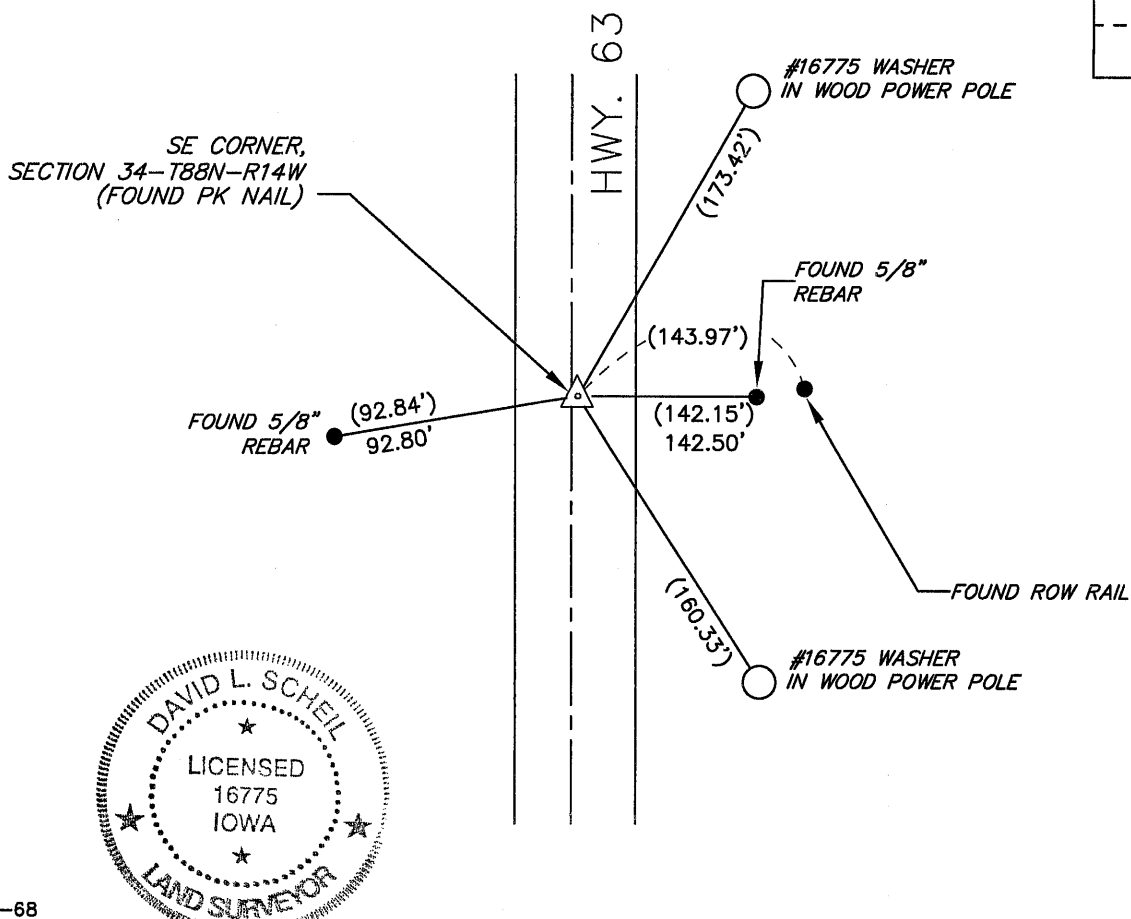
Previously recorded in Misc. Bk. 338-639 in County Recorder's Office.  
(book, page, document number, etc.)

### Monument Description and Remarks

Found PK Nail that reasonably match remaining ties in above reference. This certificate was filed because a tie was missing.

00.00 DENOTES RECORD DIMENSION (Misc. Bk. 338-639)  
(00.00) DENOTES FIELD DIMENSION

### PLAN - VIEW



BK 661-68

I hereby certify that this land surveying document was prepared and the related survey work was performed by me or under my direct personal supervision and that I am a duly Licensed Land Surveyor under the laws of the State of Iowa.

Signature: David L. Scheil, L.S.

Date: MARCH 14, 2012 Lic. No. 16775

Pages or Sheets Covered by this Seal: THIS SHEET ONLY.

My license renewal date is December 31, 2012

SEAL

### List Corners to be Indexed

Corners	Section	Twp	Range
SE CORNER,	34	88 N	14 W
SW CORNER,	35	88 N	14 W
NE CORNER,	03	87 N	14 W
NW CORNER,	02	87 N	14 W