

WAYNE CLAASSEN ENGINEERING AND SURVEYING, INC.  
P.O. BOX 898 WATERLOO, IOWA 50704-0898

PHONE: (VOICE) 319-235-6294  
(FAX) 319-235-0028

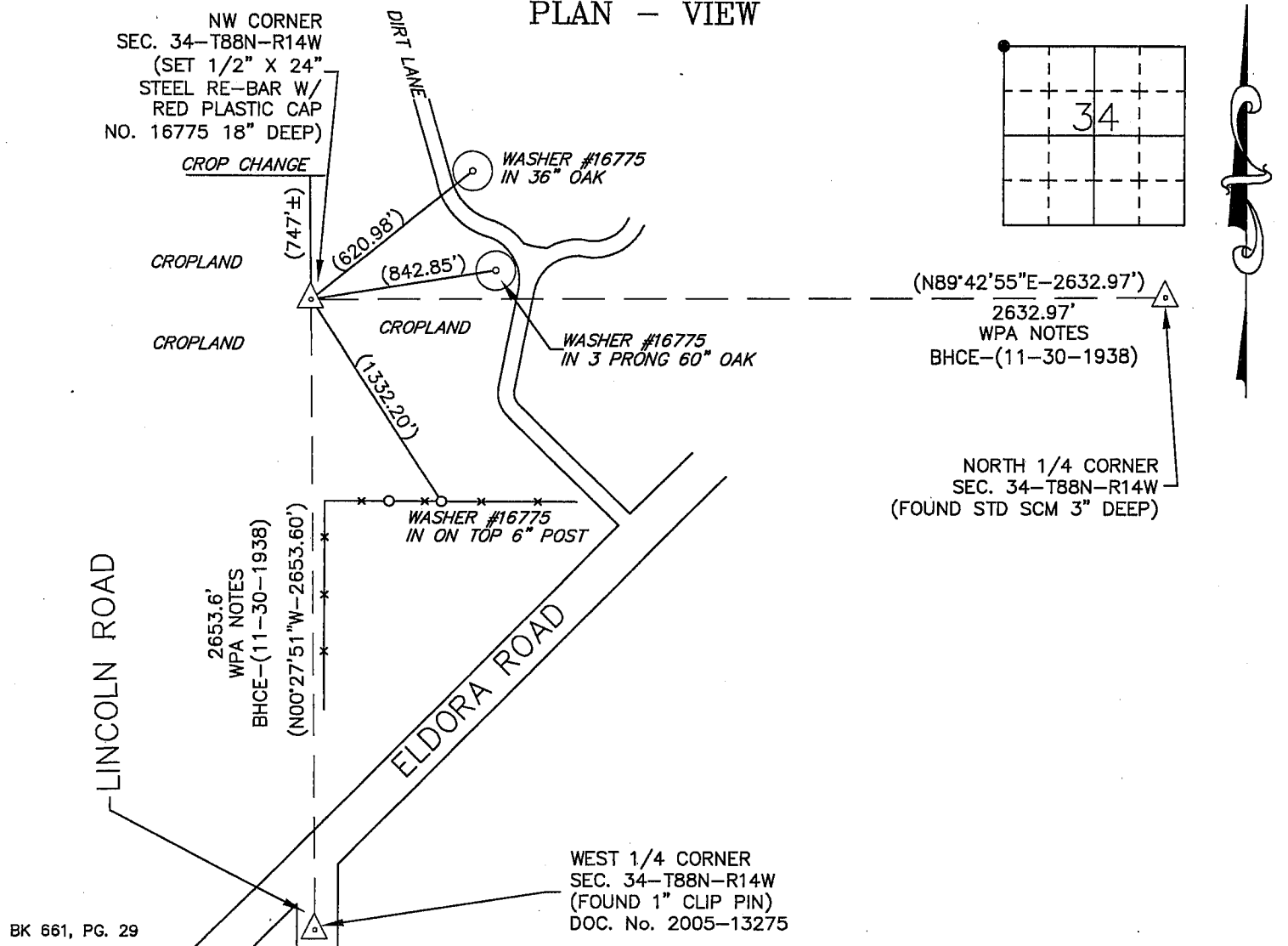
## UNITED STATES PUBLIC LAND SURVEY CORNER CERTIFICATE

Land Survey Monuments situated in Section 34, Township 88 North, Range 14 West, of the Fifth Principal Meridian, Black Hawk County, Iowa.  
Previously recorded in \_\_\_\_\_ in County Recorder's Office.  
(book, page, document number, etc.)

### Monument Description and Remarks

No certificate on file. WPA notes in Black hawk County Engineer's office, dated Nov. 30, 1938, show corner but did not show what was found. Dug hole 2' deep and 6' in diameter and also probed in and outside this area but found no stone or monument. Set 1/2" x 24" steel re-bar with red plastic cap no. 16775 as per WPA ties from W 1/4 corner of section 34 and N 1/4 corner of section 34. This corner seems to fit reasonably well with plat of survey in Misc. Book 241, pg. 294 in the Black Hawk County recorder's Office.

### PLAN - VIEW



I hereby certify that this land surveying document was prepared and the related survey work was performed by me or under my direct personal supervision and that I am a duly Licensed Land Surveyor under the laws of the State of Iowa.

Signature: David L. Scheil  
David L. Scheil, L.S.

Date: APRIL 22, 2009 Lic. No. 16775

Pages or Sheets Covered by this Seal: THIS SHEET ONLY.

My license renewal date is December 31, 2010

SEAL

### List Corners to be Indexed

Corners	Section	Twp	Range
NW CORNER,	34	88 N	14 W

