

WAYNE CLAASSEN ENGINEERING AND SURVEYING, INC.
P.O. BOX 898 WATERLOO, IOWA 50704-0898

PHONE: (VOICE) 319-235-6294
(FAX) 319-235-0028

UNITED STATES PUBLIC LAND SURVEY CORNER CERTIFICATE

Land Survey Monuments situated in Section 34, Township 88 North, Range 14 West, of the Fifth Principal Meridian, Black Hawk County, Iowa.

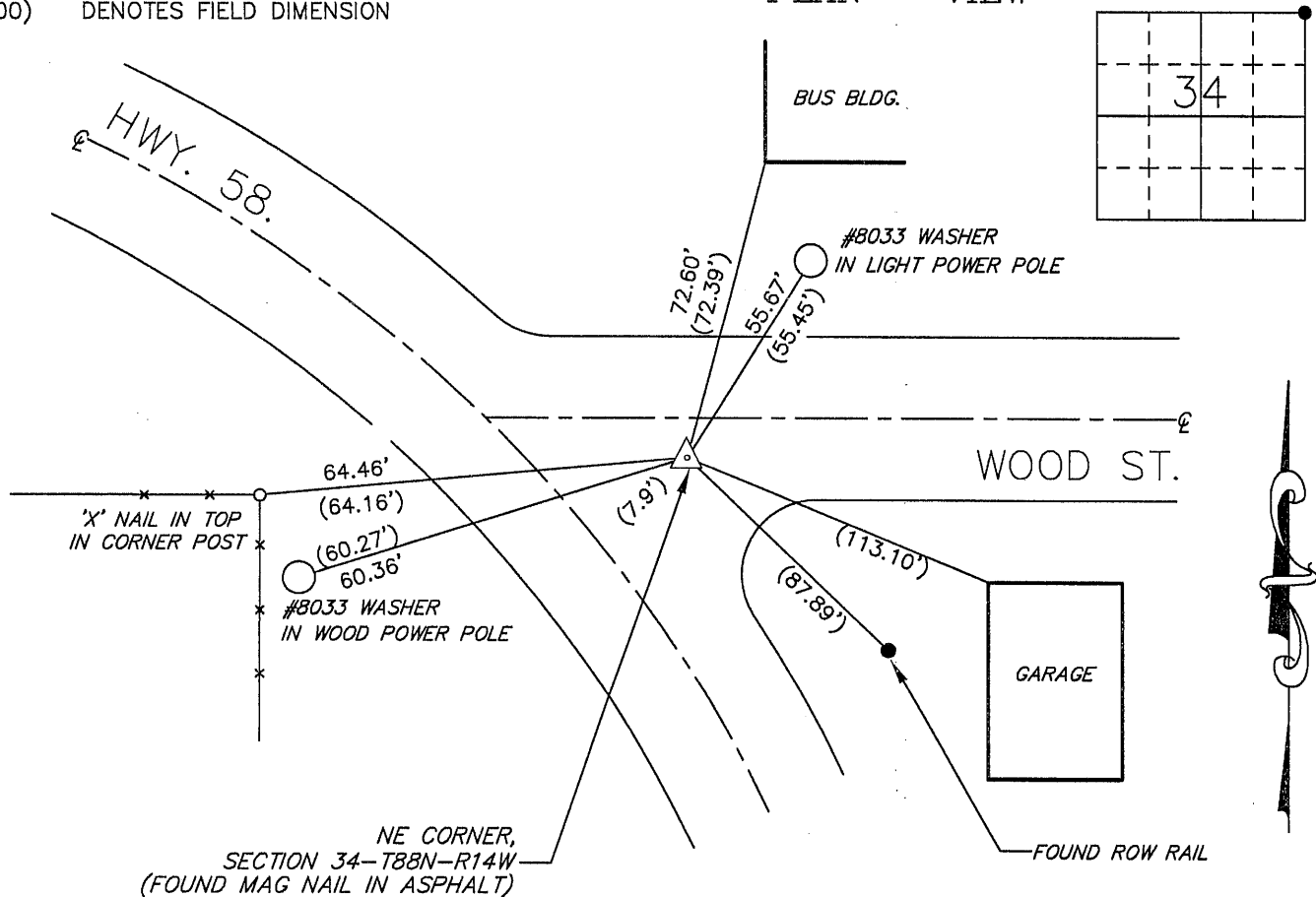
Previously recorded in Misc. Bk. 305-274 in County Recorder's Office.
(book, page, document number, etc.)

Monument Description and Remarks

Found mag nail in asphalt. This certificate was filed because the corner monument was replaced.

00.00 DENOTES RECORD DIMENSION (Misc. Bk. 305-274)
(00.00) DENOTES FIELD DIMENSION

PLAN - VIEW



BK 661-71

I hereby certify that this land surveying document was prepared and the related survey work was performed by me or under my direct personal supervision and that I am a duly Licensed Land Surveyor under the laws of the State of Iowa.

Signature: David L. Scheil

David L. Scheil, L.S.

Date: March 14, 2012 Lic. No. 16775

Pages or Sheets Covered by this Seal: THIS SHEET ONLY.

My license renewal date is December 31, 2012

SEAL

List Corners to be Indexed

Corners	Section	Twp	Range
NE CORNER,	34	88 N	14 W
NW CORNER,	35	88 N	14 W
SW CORNER,	26	88 N	14 W
SE CORNER,	27	88 N	14 W

