



Doc ID: 003796030001 Type: GEN  
Recorded: 06/05/2009 at 10:43:54 AM  
Fee Amt: \$7.00 Page 1 of 1  
Instr# 200800029815  
Black Hawk County Iowa  
JUDITH A MCCARTHY RECORDER  
Book 1080 Page 49636 - 49636  
File **2009-00023500**

WAYNE CLAASSEN ENGINEERING AND SURVEYING, INC.  
P.O. BOX 898 WATERLOO, IOWA 50704-0898

PHONE: (VOICE) 319-235-6294  
(FAX) 319-235-0028

## UNITED STATES PUBLIC LAND SURVEY CORNER CERTIFICATE

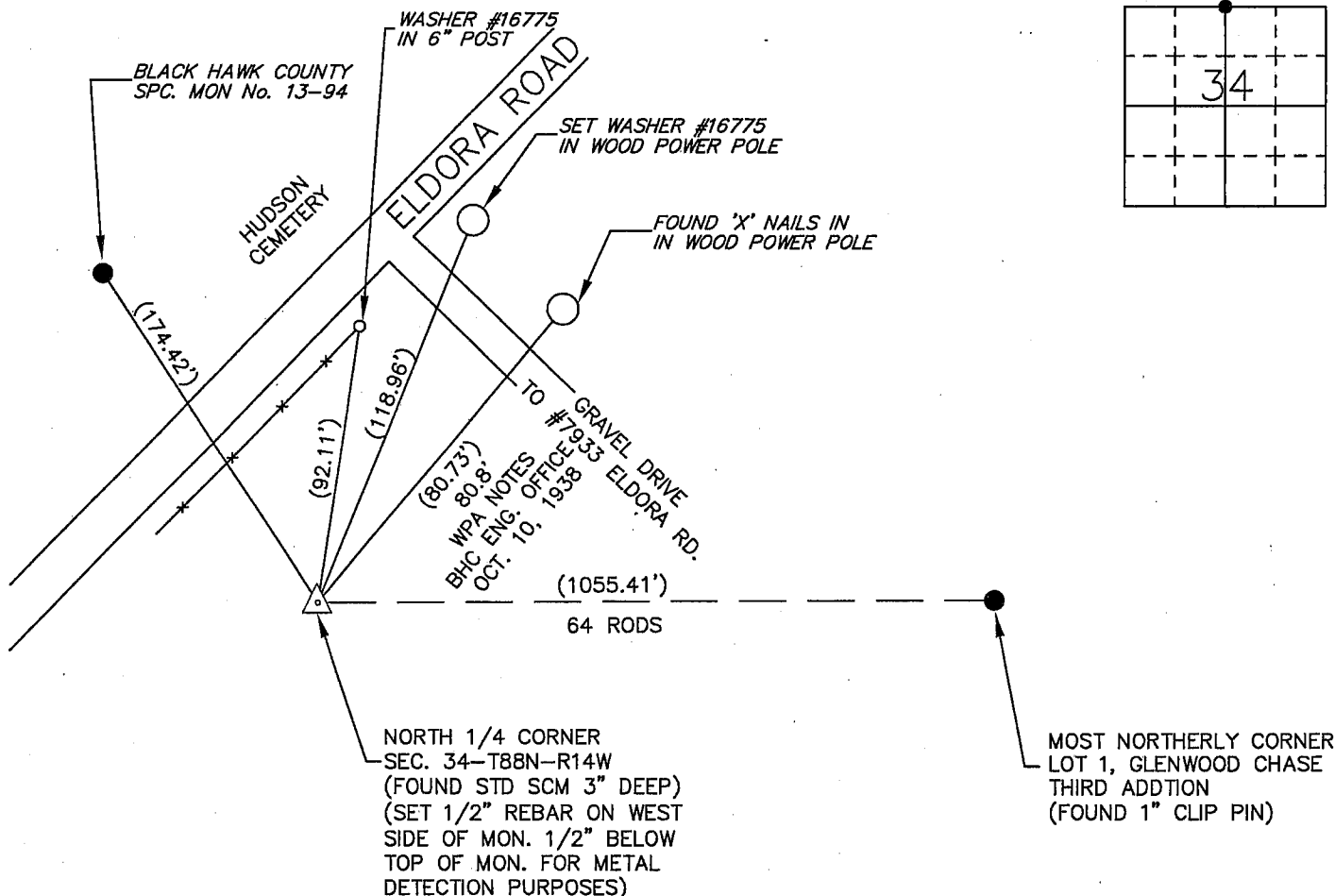
Land Survey Monuments situated in Section 34, Township 88 North, Range 14 West, of the Fifth Principal Meridian, Black Hawk County, Iowa.

Previously recorded in \_\_\_\_\_ in County Recorder's Office.  
(book, page, document number, etc.)

### Monument Description and Remarks

No certificate on file. WPA field notes in Black Hawk County Engineer's Office, dated Oct. 10, 1938, says "S 1/4 corner Sec. 27-88-14 found niggerhead 22 1/2" x 11" x 5 1/2" also oak hub 2" x 2" x 12" lowered evidence and set C.M. on top 12" under ground." October 1990, Glenwood Chase First Addition show NW corner of NE 1/4 Sec. 34, but do not show what was there or a tie. July 1996, Glenwood Chase Third Addition shows S 1/4 cor. of 27-88-14 with a tie of 64 rods to the most Northerly corner of Lot 1. Found Std. SCM 3" deep that reasonably match above ties. Set 1/2" rebar on West side of Mon. 1/2" below top for metal detection purposes.

### PLAN - VIEW



BK 661, PG. 28

I hereby certify that this land surveying document was prepared and the related survey work was performed by me or under my direct personal supervision and that I am a duly Licensed Land Surveyor under the laws of the State of Iowa.

Signature: David L. Scheil  
David L. Scheil, L.S.

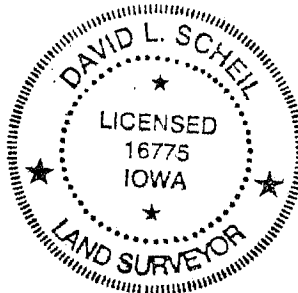
Date: APRIL 22, 2009 Lic. No. 16775

Pages or Sheets Covered by this Seal: THIS SHEET ONLY.

My license renewal date is December 31, 2010

### List Corners to be Indexed

Corners	Section	Twp	Range
N 1/4 CORNER,	34	88 N	14 W



SEAL  
65-09 \$19.00  
#31268 \$19.00

(700)