

WAYNE CLAASSEN ENGINEERING AND SURVEYING, INC.  
P.O. BOX 898 WATERLOO, IOWA 50704-0898

PHONE: (VOICE) 319-235-6294  
(FAX) 319-235-0028

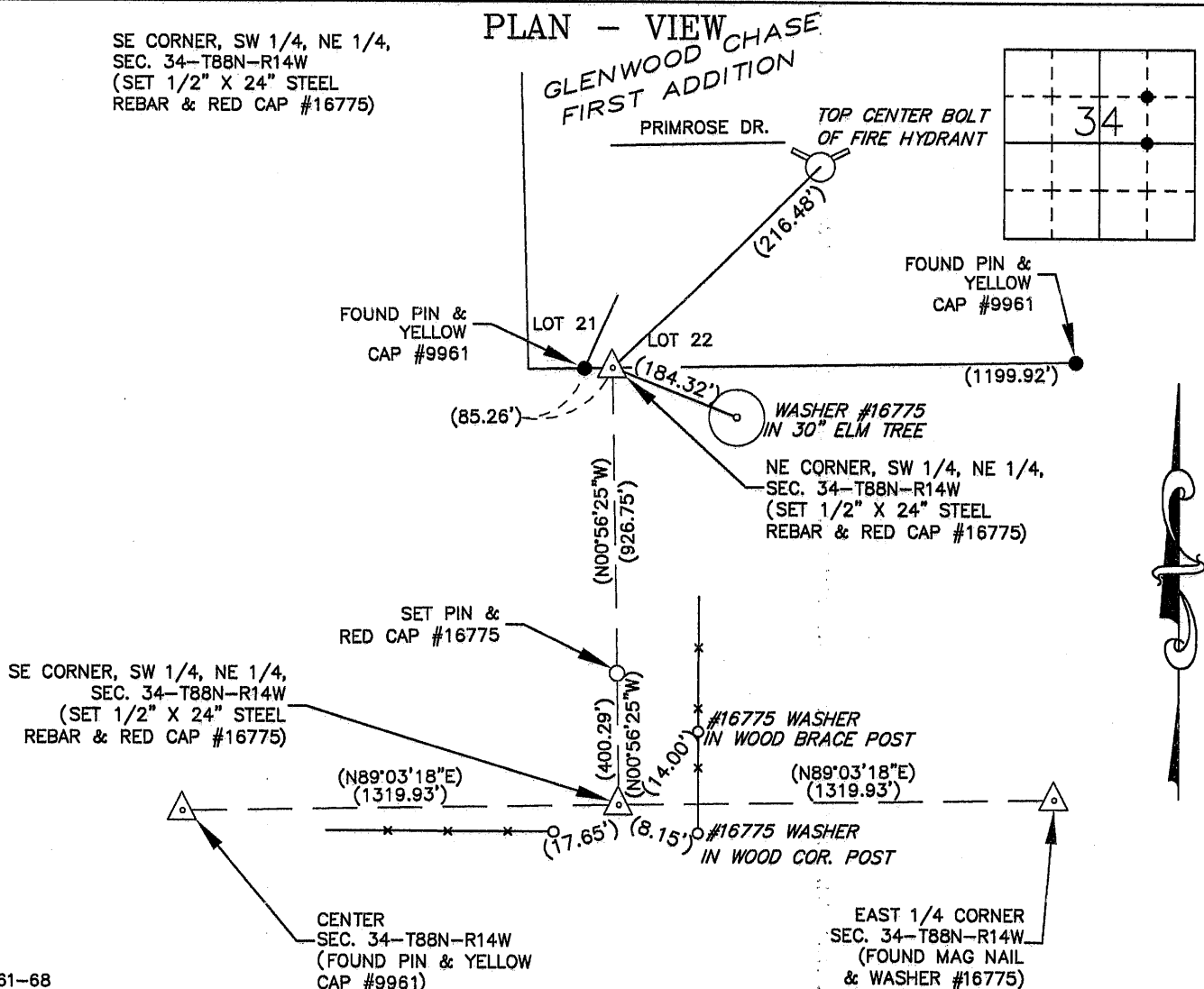
## UNITED STATES PUBLIC LAND SURVEY CORNER CERTIFICATE

Land Survey Monuments situated in Section 34, Township 88 North, Range 14 West, of the Fifth Principal Meridian, Black Hawk County, Iowa.  
Previously recorded in \_\_\_\_\_ in County Recorder's Office.  
(book, page, document number, etc.)

### Monument Description and Remarks

SE corner, SW 1/4, NE 1/4: Set 1/2" X 24" steel rebar & red cap #16775 at midpoint between center of section and the E 1/4 corner of section. This certificate was filed because there is no certificate on file.

NE corner, SW 1/4, NE 1/4: Set 1/2" X 24" steel rebar & red cap #16775 on a line from the SE corner, SW 1/4, NE 1/4 to the NE corner, NW 1/4, NE 1/4 on the South line of Glenwood Chase First Addition. This certificate was filed because there is no certificate on file.



BK 661-68

I hereby certify that this land surveying document was prepared and the related survey work was performed by me or under my direct personal supervision and that I am a duly Licensed Land Surveyor under the laws of the State of Iowa.

Signature: David L. Scheil  
David L. Scheil, L.S.

Date: March 14, 2012 Lic. No. 16775

Pages or Sheets Covered by this Seal: THIS SHEET ONLY.

My license renewal date is December 31, 2012

SEAL

### List Corners to be Indexed

Corners	Section	Twp	Range
SE CORNER, SW 1/4, NE 1/4	34	88 N	14 W

NE CORNER, SW 1/4, NE 1/4	34	88 N	14 W
------------------------------	----	------	------

