

# UNITED STATES PUBLIC LAND SURVEY CORNER CERTIFICATE OF

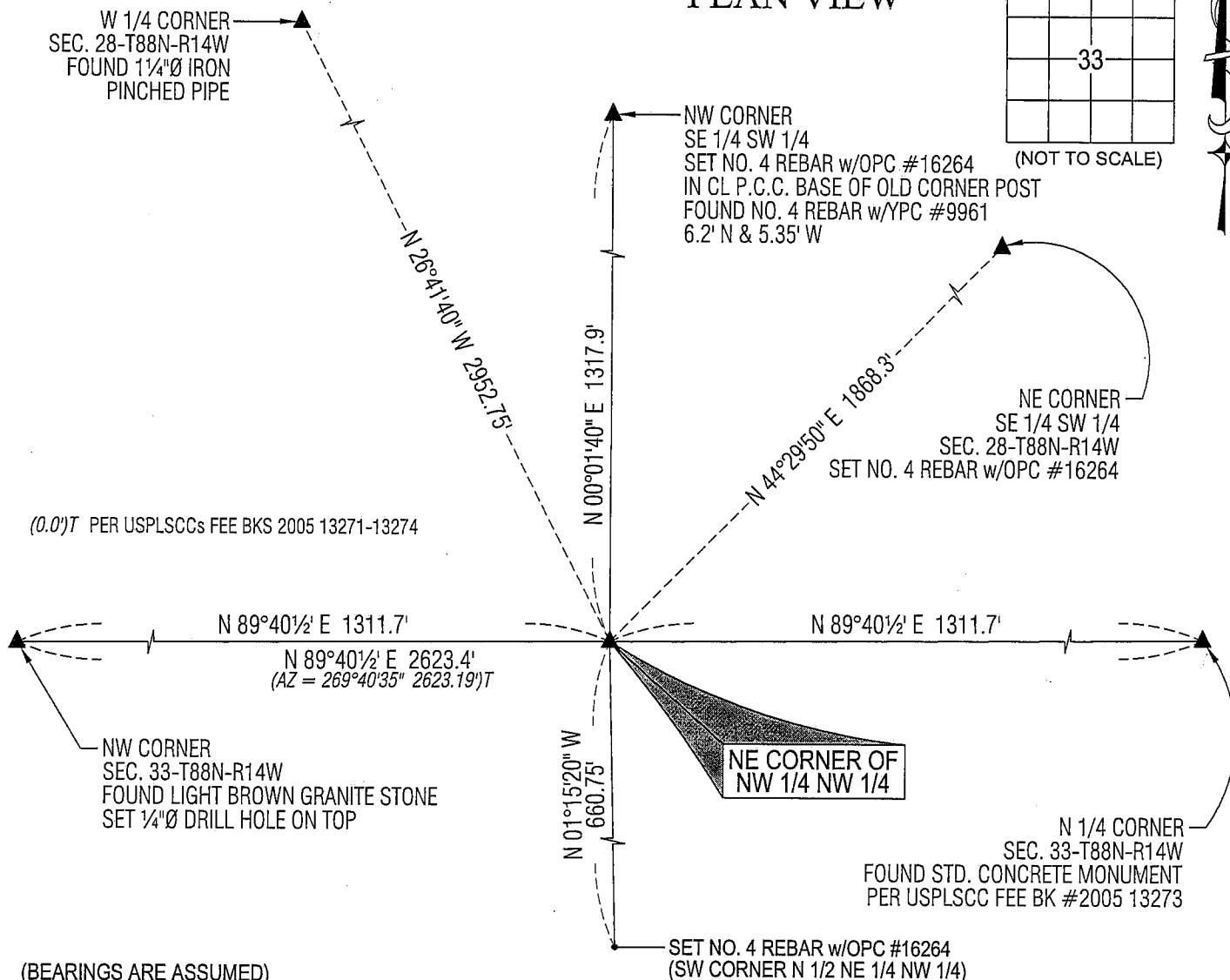
PREVIOUSLY RECORDED IN N/A

NO USPLSCC ON FILE. SURVEY COMPLETED IN THE SE 1/4 SW 1/4 OF SEC. 28-T88N-R14W & IN THE NE 1/4 NW 1/4 SEC. 33-T88N-R14W.

(SHOW A MINIMUM OF THREE REFERENCE TIES TO DURABLE PHYSICAL OBJECTS, RELEVANT MONUMENTS AND PHYSICAL CONDITIONS THAT WILL ENABLE RECOVERY OF THE CORNER.)

(NOT TO SCALE)

(NOT TO SCALE)



(BEARINGS ARE ASSUMED)



**HELLAND ENGINEERING & SURVEYING, LTD.**  
1107 Technology Parkway  
Cedar Falls, Iowa 50613-6951  
(319)-266-0161

SHINER = 8D NAIL & 1 5/16"Ø METAL SHINER  
BRASS TAG = 13/16"Ø BRASS TAG  
OPC = PLASTIC CAP (O=ORANGE, R=RED, Y=YELLOW)  
(00') RECORDED AS FILE NAME: 08-147C5.DWG



My license renewal date is December 31, 2009.  
All pages or sheets are covered by this seal except:

CORNER	SECTION	TOWNSHIP	RANGE
NE CORNER	33	88N	14W
NW 1/4 NW 1/4			

R.