

BLACK HAWK COUNTY ENGINEERS OFFICEPREPARED BY: **BLACK HAWK COUNTY ENGINEERS OFFICE**
316 E. FIFTH STREET, ROOM 211 WATERLOO, IOWA 50703PH.# (319) 833-3008
FAX.# (319) 833-3139SLSI 9-94
CERT 12-96

UNITED STATES PUBLIC LAND SURVEY CORNER CERTIFICATE OF
Land Survey Monuments situated in Section 33, Township 88 N,
Range 14 W, of the Fifth Principal Meridian, BLACK HAWK County, Iowa.
Previously recorded in Misc. Book n/a, Page n/a, in County Recorder's Office.

(Show reason for preparing this certificate, the evidence and detailed procedures used in establishing the corner positions and monumentation found or placed.)

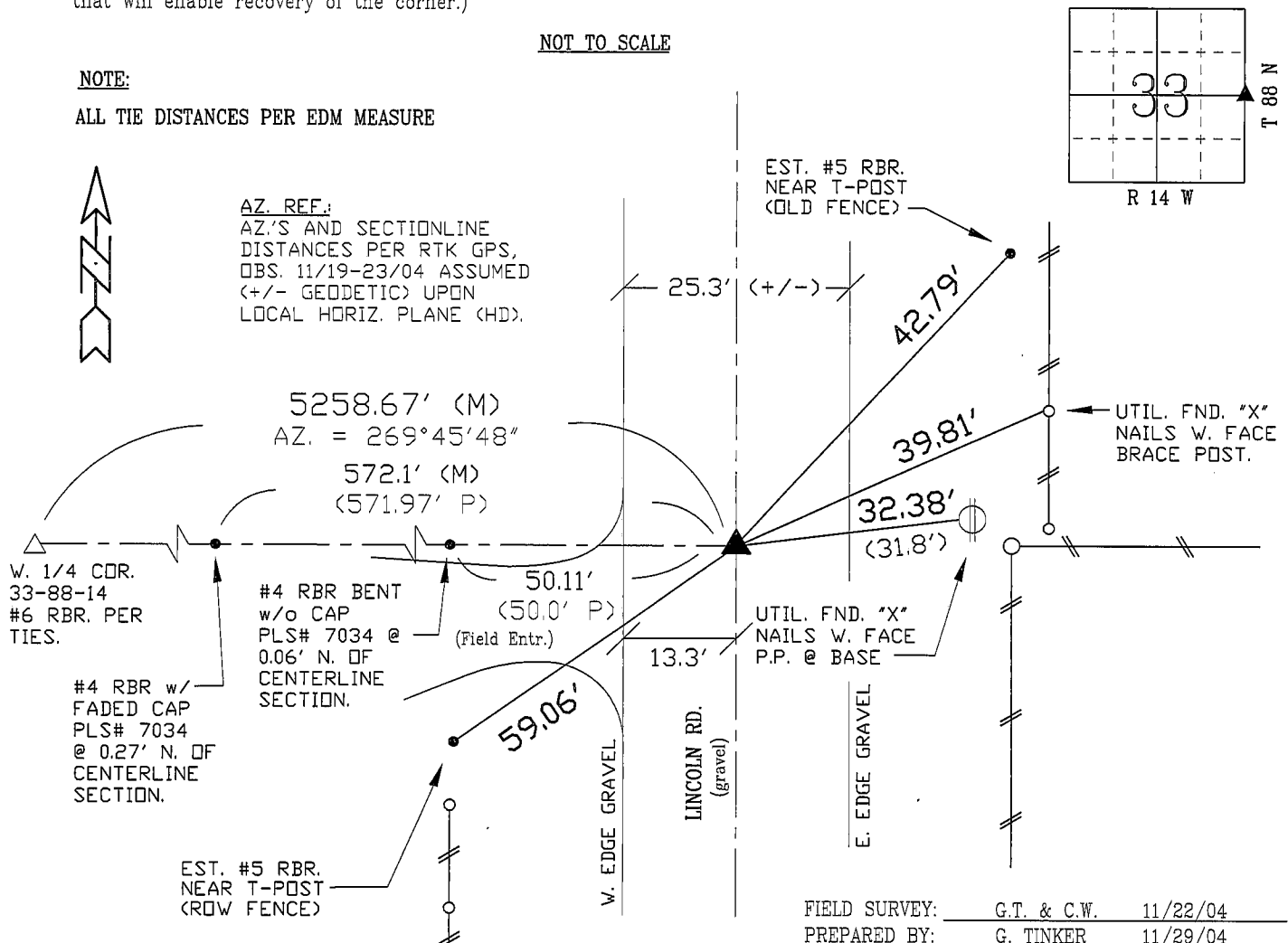
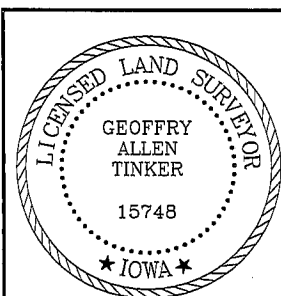
Monument Description and Remarks: FND. 60d SPK. w/ RED RIBBON. TEMP.
REF. LOCATION, AND FOUND 1" DIA. PINCHED PIPE @ 0.5' DEEP AND BENT
SLIGHTLY N.W./LY. PLS. #7034 CALLS FOR "FND. I.P." PER MISC. 241 p.294
PLAT OF SURVEY (8-81). R.O.W. COR. WEST FOUND BENT @ +/- PLATTED
LOCATION. HELD PINCHED PIPE AS FOUND, AND REF. TO RECORD PLAT AS
SHOWN. CORNER FILED FOR RECORD TO EST. CENTER OF SAID SECTION.
EXIST. CO. TIES CALL FOR I.P. OVER C.M., C.M. ELV. @ 914.33 vs MEAS. TOP
OF PINCHED PIPE ELV. @ 915.0 (C.M. -0.67'). ONLY REC. TIE TO P.P. E. (SAME ?).

PLAN - VIEW

(Show a minimum of three reference ties to durable physical objects, relevant monuments and physical conditions that will enable recovery of the corner.)

NOT TO SCALE**NOTE:**

ALL TIE DISTANCES PER EDM MEASURE

FIELD SURVEY: G.T. & C.W. 11/22/04
PREPARED BY: G. TINKER 11/29/04**CERTIFICATION**

I hereby certify that this land surveying document was prepared and the related survey work was performed by me or under my direct personal supervision and that I am a duly licensed Land Surveyor under the laws of the State of Iowa.

Geoffrey C. Tinker 11/29/04
Geoffrey Allen Tinker (date)

License Number 15748My license renewal date is December 31, 2004

Pages or sheets covered by this seal:

This Land Corner Certificate Only.**LIST CORNERS TO BE INDEXED**

Corner	Section	Township	Range
E. 1/4	33	88 N	14 W
W. 1/4	34	88 N	14 W