

Env  
\*  
Prepared by & Return to: Herold - Reicks Surveying, 2206 East Bremer Avenue, Waverly, IA 50677, Ph. 319-483-5187

United States Public Land Survey Corner Certificate

Land Survey Monument situated in  
Section 33, Township 88 North, Range 14 West of the Fifth Principal Meridian, **Black Hawk** County, Iowa.  
On file in **Document #2005-13274** in the County Recorder's office.

This certificate is being prepared in compliance with Iowa Code Chapter 355.11 because:

- 
- ☐

☐

☐

☒

☐
- There is no certificate on file for this corner.

There are no longer three valid ties of record.

There are changes to reference ties of record.

There is change of monumentation of record.

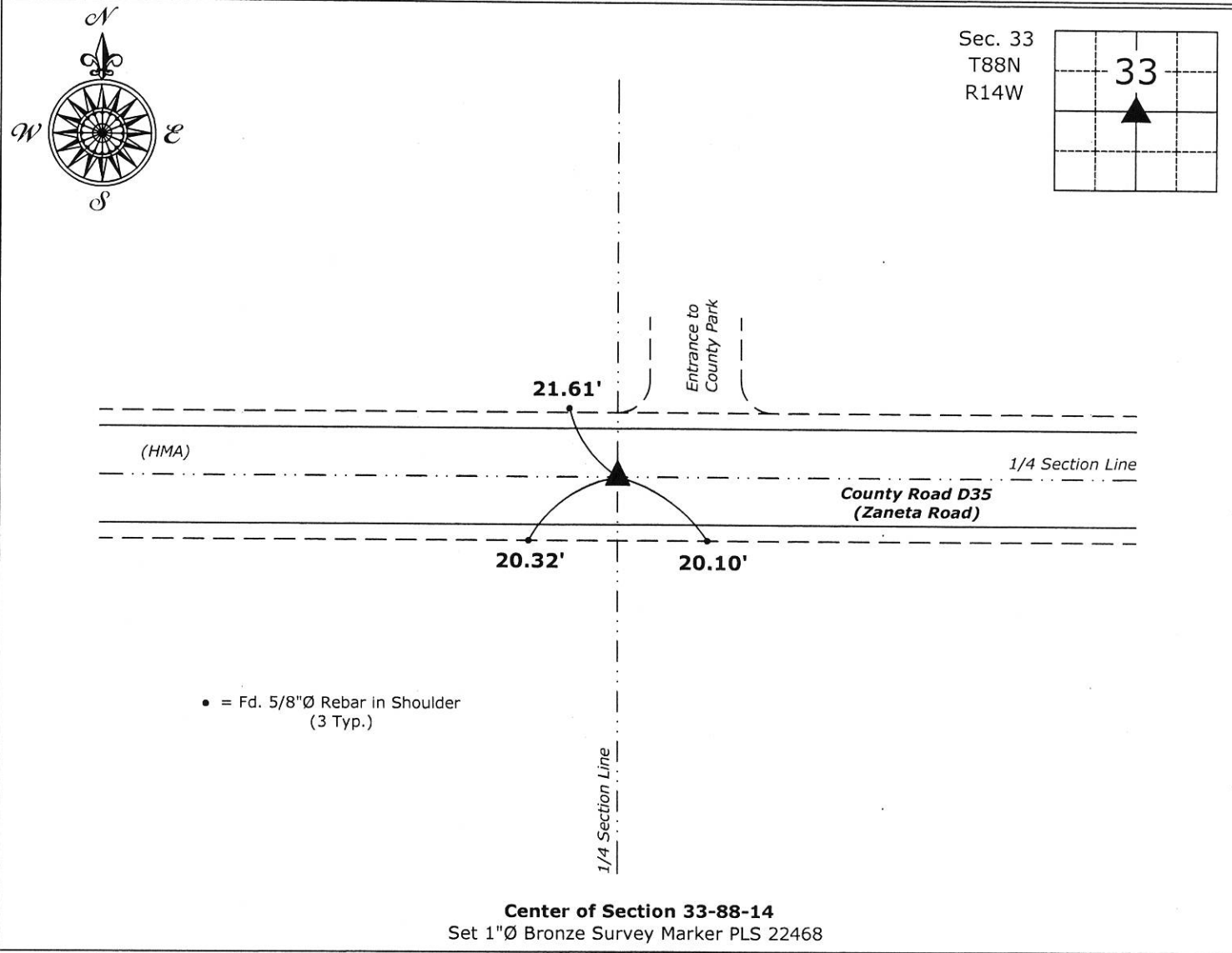
To clarify description of record monument (ties).

Monument Description and Remarks:

**Center of Section:** The previously recorded Section Corner Certificate, indicates Set Survey Mark Nail with Stainless Steel Washer, said monument was removed during highway reconstruction. The position of said Section Corner was reestablished with information obtained from previously recorded Section Corner Certificate. Set 1"Ø Bronze Survey Marker PLS 22468 at said position to perpetuate the Corner. Corner reset in conjunction with Project No. STP-S-C007(148)--5E-07.

Plan View

(Show a minimum of three reference ties to durable physical objects, relevant monuments and physical conditions that will enable recovery of the corner.)



PROFESSIONAL LAND SURVEYOR

ISAAH M. REICKS

22468

IOWA

I hereby certify that this land surveying document was prepared and the related survey work was performed by me or under my direct personal supervision and that I am a duly licensed Land Surveyor under the laws of the State of Iowa.

Isaiah M. Reicks

2-25-19

Date:

License number 22468

My license renewal date is December 31, 2019.

Sheets covered by this seal: Individual sheet only

List Corner to be Indexed

Corner

Section

Twp.

Range

CTR

33

88

14

Project Number: 2018-854

FB: Black Hawk 10, Pg. 36

File: I:\Projects - WO\2018\Construction\2018-854 Hudson - Zaneta Road\2018-854.dwg, 2/25/2019 3:23:37 PM