

SC -  
MISC ✓  
INDEX *cd*  
MARGIN  
PROOF  
COMPARE

BLACK HAWK COUNTY IOWA:SS  
Filed for record May 18, 19 98 at 23758  
4:00 P .M. and recorded in Book 330  
of MISC Page 75  
*Patricia S. Soss* Recorder  
FEE 1-5.00/  
WAYNE CLAASSEN ENGINEERING AND SURVEYING, INC.

WAYNE CLAASSEN ENGINEERING AND SURVEYING, INC.  
P.O. BOX 898 WATERLOO, IOWA 50704-0898

PHONE: (VOICE) 319-235-6294  
(FAX) 319-235-0028

## UNITED STATES PUBLIC LAND SURVEY CORNER CERTIFICATE

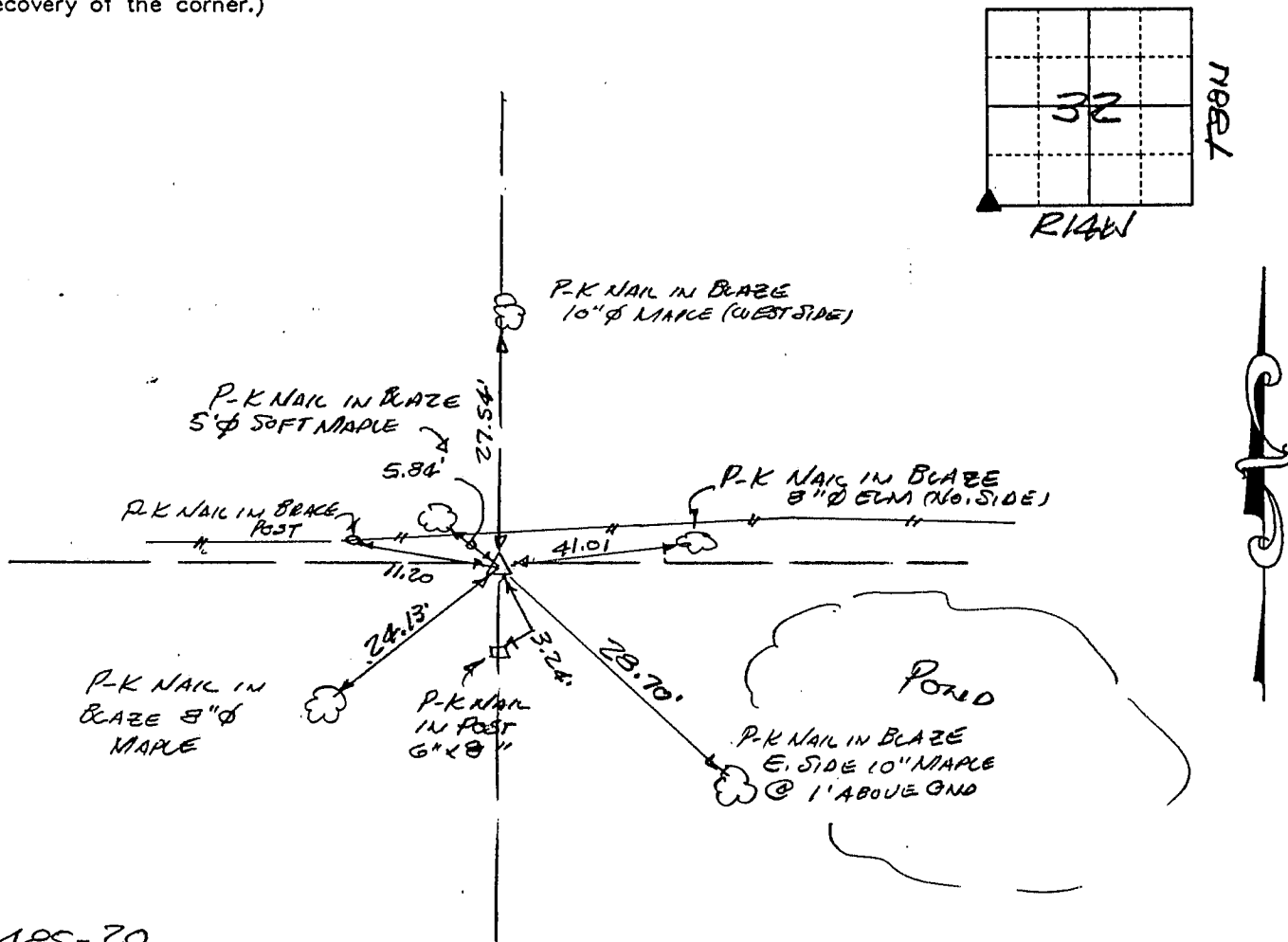
Land Survey Monuments situated in Section 32, Township 98N, Range 14W, of the Fifth Principal Meridian, BLACK HAWK County, Iowa.  
Previously recorded in N/A in County Recorder's Office.  
(book, page, document number, etc.)

(Show reason for preparing this certificate, the evidence and detailed procedures used in establishing the corner positions and monumentation found or placed.)

Monument Description and Remarks SW CORNER: FOUND 5CM 24" DEEP WITH  
STONES AROUND & OVER. SET 1/2" X 24" REBAR @ NW CORNER MONUMENT, 1" BELOW  
TOP. SET 8033 CAP ON 1/2" X 24" REBAR OVER MONUMENT. SET STEEL POST & SURVEY  
MARKER SIGN 0.0' SOUTH OF MONUMENT.

### PLAN - VIEW

(Show a minimum of three reference ties to durable physical objects, relevant monuments and physical conditions that will enable recovery of the corner.)



I hereby certify that the survey work was completed and this certificate was prepared by me or under my direct personal supervision and that I am a duly licensed land surveyor under the laws of the state of Iowa.

Signature: *F. William King*

(Name typed or printed:) F. WILLIAM KING

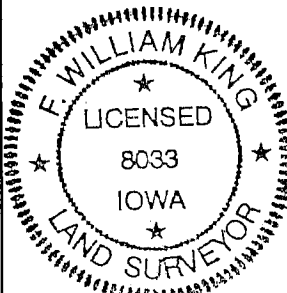
Date: 5-18-1998

Lic. No. 8033

SEAL

#### List Corners to be Indexed

Corners	Section	Twp	Range
SW	32	98N	14W



BOOK 330 PAGE 075