

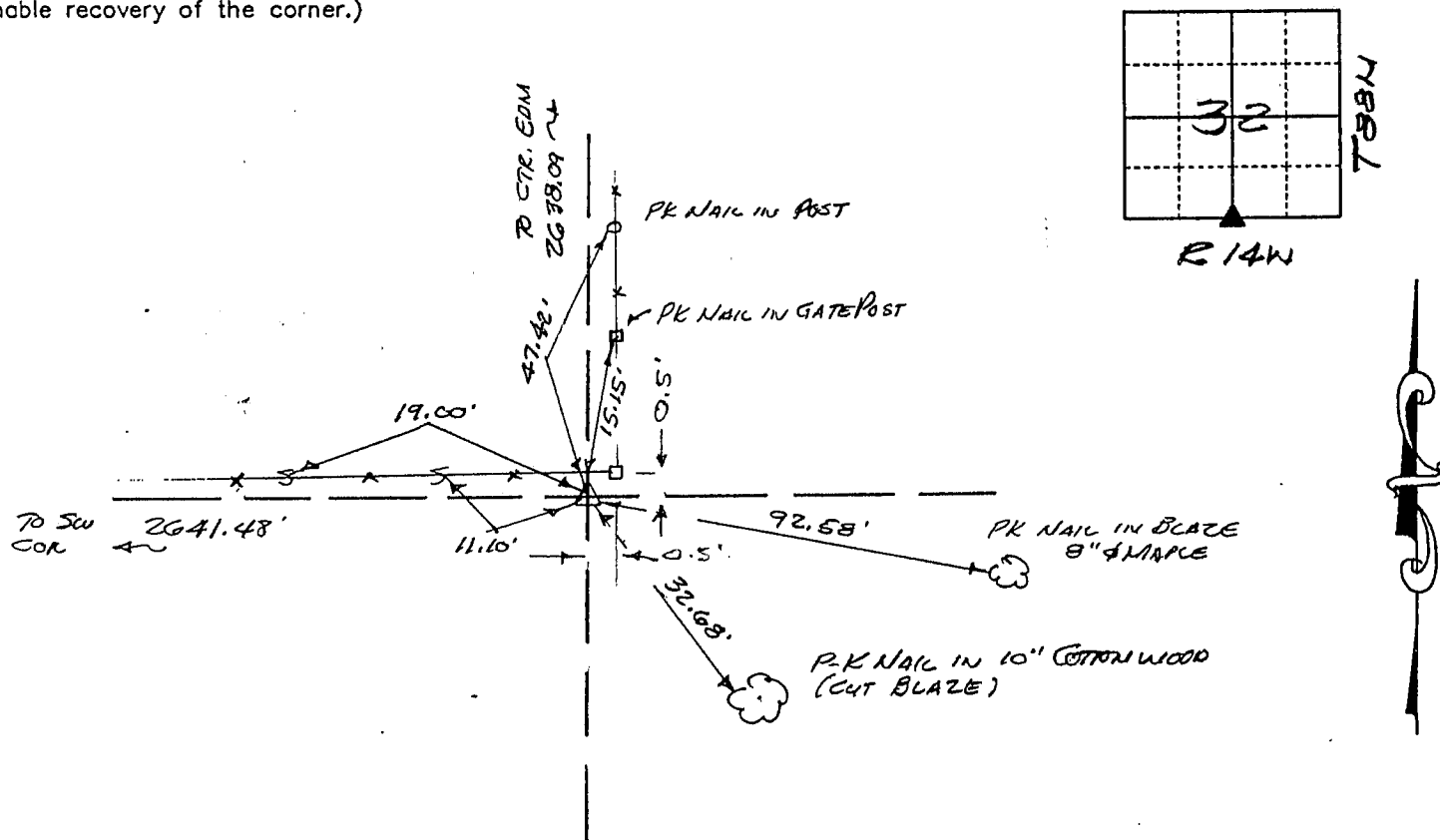
BLACK HAWK COUNTY IOWA:SS  
Filed for record May 18, 19 98 at 23760  
4:00 P.M. and recorded in Book 330  
of MISC Page 77  
*Patricia A. Less* Recorder  
FEE 1-5.00/  
WAYNE CLAASSEN ENGINEERING AND SURVEYING, INC.

PHONE: (VOICE) 319-235-6294  
(FAX) 319-235-0028

Land Survey Monuments situated in Section 32, Township 38 N, Range 14 W, of the Fifth Principal Meridian, Black Hawk County, Iowa.  
Previously recorded in N/A in County Recorder's Office.  
(book, page, document number, etc.)

Monument Description and Remarks 5 1/4 CORNER: FOUND SCM 10" DEEP. SET 1/2" x  
REBAR @ SE CORNER OF MONUMENT 1" BELOW TOP. SET STEEL POST & SURVEY MARKER  
SIGN 0.60' SOUTH OF MONUMENT.

(Show a minimum of three reference ties to durable physical objects, relevant monuments and physical conditions that will enable recovery of the corner.)



I hereby certify that the survey work was completed and this certificate was prepared by me or under my direct personal supervision and that I am a duly licensed land surveyor under the laws of the state of Iowa.

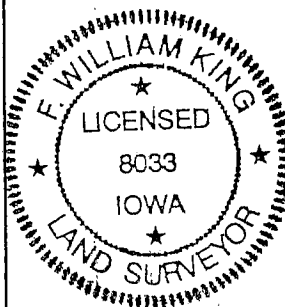
of the state of Iowa.

*F. William King*

(Name typed or printed:) F. WILLIAM KING

SEAL

Corners	Section	Twp	Range
5114	32	38N	14W



BOOK 330 PAGE 077