

BLACK HAWK COUNTY ENGINEERS OFFICE

PREPARED BY: BLACK HAWK COUNTY ENGINEERS OFFICE
316 E. FIFTH STREET, ROOM 211 WATERLOO, IOWA 50703

PH.# (319) 833-3008
FAX.# (319) 833-3139

SLSI 9-94
CERT 12-96

UNITED STATES PUBLIC LAND SURVEY CORNER CERTIFICATE OF

Land Survey Monuments situated in Section 32, Township 88 N, Range 14 W, of the Fifth Principal Meridian, BLACK HAWK County, Iowa. Previously recorded in Misc. Book N/A, Page N/A, in County Recorder's Office.

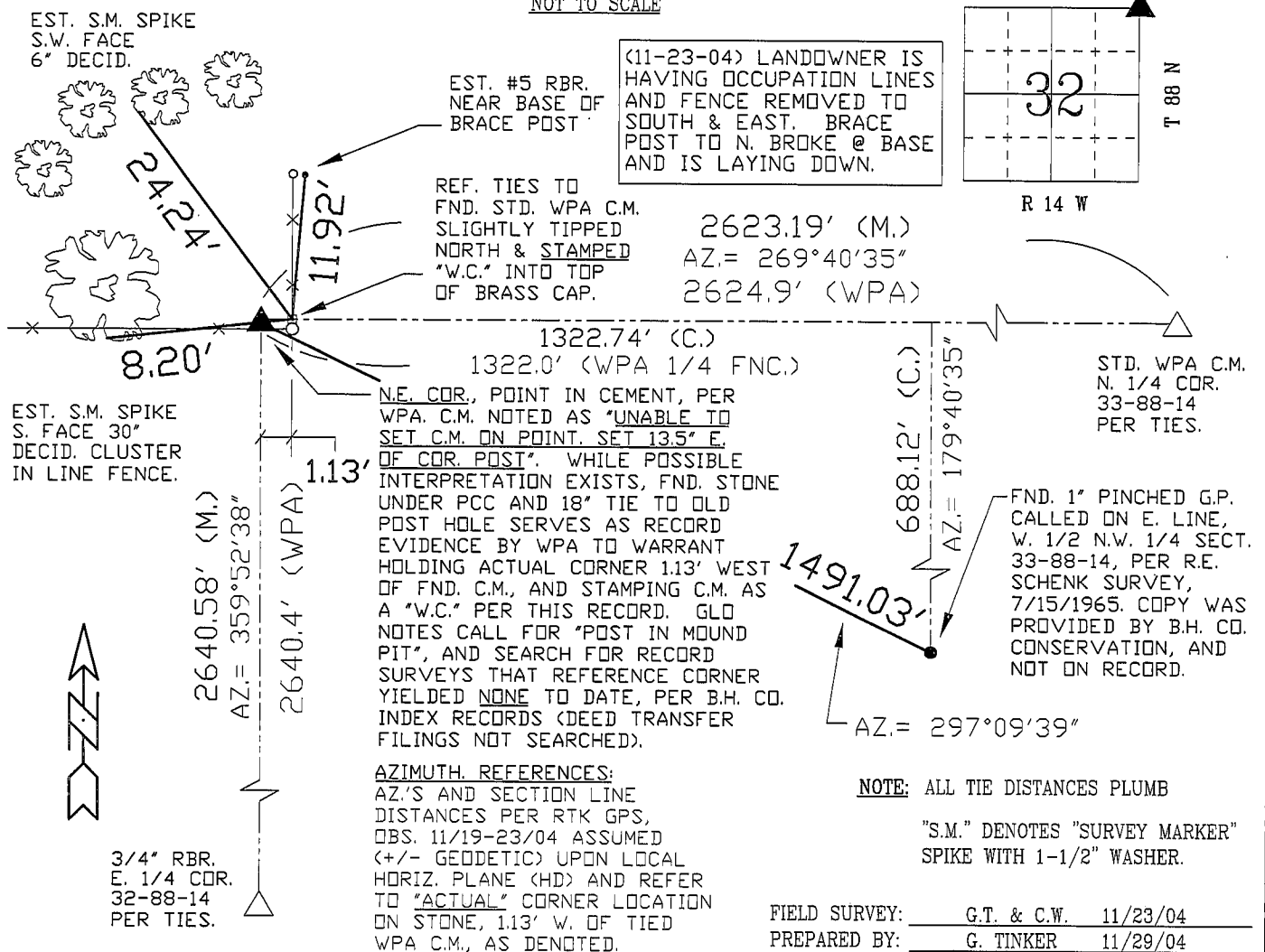
(Show reason for preparing this certificate, the evidence and detailed procedures used in establishing the corner positions and monumentation found or placed.)

Monument Description and Remarks: FND. STANDARD WPA C.M. ALONG N. FACE OF EXIST. COR. POST. PER 1938 WPA NOTES, C.M. WAS "UNABLE TO BE SET ON POINT" DUE TO CEMENT BASE AROUND EXISTING COR. POST (1938), & PCC STILL EXISTS. WPA NOTES STATE "C.M. SET 13.5" EAST OF CORNER POST", WITH WPA TIES SHOWING 18" TO OLD COR. POST. AT 18" FROM C.M., A HOLE EXISTS FROM OLD COR. POST. SEARCHING WEST OF FND. C.M., BROKE THROUGH SAID HOLE ON NE FACE TO FIND A LARGE RED GRANITE STONE UNDER PCC (CEMENT) PAD, w/ STONE ESTIMATED 10"x10" IN SIZE, AND SHAPED AS LOC. ALONG THE S. FACE. HELD "ACTUAL" CORNER AT 1.13' W. OF FND. C.M. TO STONE REF., WITH C.M. ON N. LINE OF N.W. 1/4 SECT. 33. CORNER REF. FOR B.H. CO. CONSERVATION PARCEL TIE, IN N.W. 1/4 SECT. 33-T88-R14.

PLAN - VIEW

(Show a minimum of three reference ties to durable physical objects, relevant monuments and physical conditions that will enable recovery of the corner.)

NOT TO SCALE



CERTIFICATION



I hereby certify that this land surveying document was prepared and the related survey work was performed by me or under my direct personal supervision and that I am a duly licensed Land Surveyor under the laws of the State of Iowa.

Geoffrey Allen Tinker (date)

License Number 15748

My license renewal date is December 31, 2004

Pages or sheets covered by this seal:

This Land Corner Certificate Only.

LIST CORNERS TO BE INDEXED

<u>Corner</u>	<u>Section</u>	<u>Township</u>	<u>Range</u>
N.E. COR.	32	88 N	14 W
N.W. COR.	33	88 N	14 W
S.E. COR.	29	88 N	14 W
S.W. COR.	28	88 N	14 W