

## BLACK HAWK COUNTY ENGINEERS OFFICE

PREPARED BY: BLACK HAWK COUNTY ENGINEERS OFFICE  
316 E. FIFTH STREET, ROOM 211 WATERLOO, IOWA 50703PH.# (319) 833-3008  
FAX.# (319) 833-3139SLSI 9-94  
CERT 12-96

UNITED STATES PUBLIC LAND SURVEY CORNER CERTIFICATE OF  
Land Survey Monuments situated in Section 32, Township 88 N,  
Range 14 W, of the Fifth Principal Meridian, BLACK HAWK County, Iowa.  
Previously recorded in Misc. Book N/A, Page N/A, in County Recorder's Office.

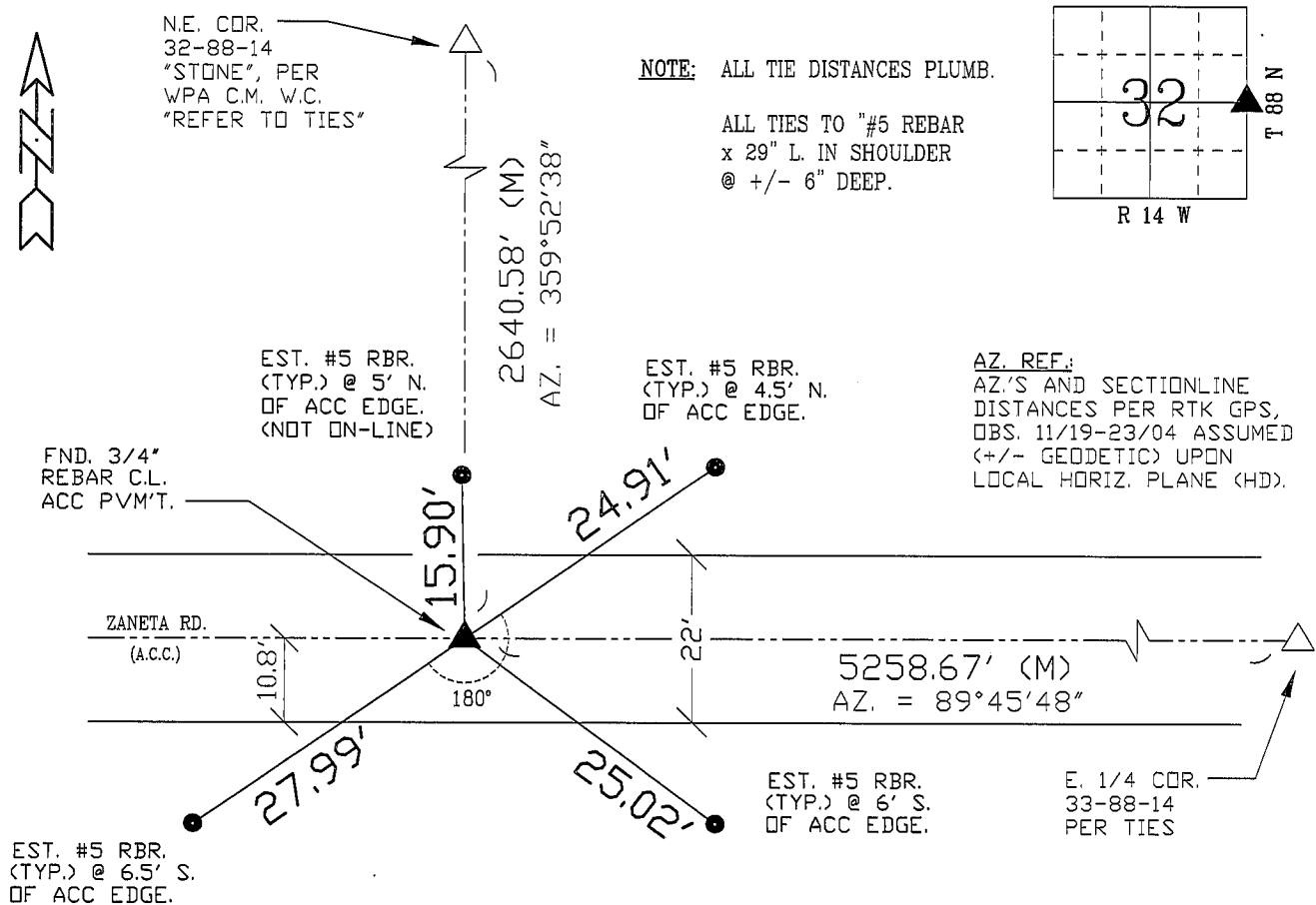
(Show reason for preparing this certificate, the evidence and detailed procedures used in establishing the corner positions and monumentation found or placed.)

Monument Description and Remarks: EAST 1/4 CORNER SECTION 32-88-14.  
UTIL. FOUND 3/4" REBAR FLUSH w/ A.C.C. PVM'T. @ C.L. OF ZANETA RD. @  
5258.7' (M) FROM E. 1/4 SECT. 33-T88-R14. CORNER HELD, AND UTIL. TO  
EST. CENTER SECTION 33-T88-R14 TO EAST. NO R.O.W. FENCE EXISTS, AND  
CURRENT OCCUP. LINE NORTH CURRENTLY BEING REMOVED BY LANDOWNER.  
CERT. FILED FOR PUBLIC RECORD, w/ NO CURRENT CORNER ON RECORD.

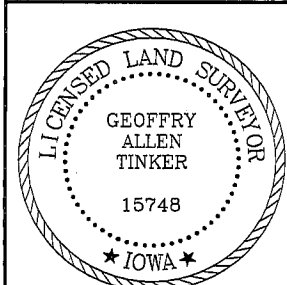
## PLAN - VIEW

(Show a minimum of three reference ties to durable physical objects, relevant monuments and physical conditions that will enable recovery of the corner.)

NOT TO SCALE

FIELD SURVEY: G.T. & C.W. 11/22/04  
PREPARED BY: G. TINKER 11/23/04

## CERTIFICATION



I hereby certify that this land surveying document was prepared and the related survey work was performed by me or under my direct personal supervision and that I am a duly licensed Land Surveyor under the laws of the State of Iowa.

*Geoffry C. Tinker* 11/29/04  
Geoffry Allen Tinker (date)

License Number 15748

My license renewal date is December 31, 2004

Pages or sheets covered by this seal:

This Land Corner Certificate Only.

## LIST CORNERS TO BE INDEXED

Corner	Section	Township	Range
E. 1/4	32	88 N	14 W
W. 1/4	33	88 N	14 W