

INDEX

BLACK HAWK COUNTY, IOWA:ss

FEE BOOK # 2006 21249

PROOF

FILED FOR RECORD

MAR 3

2006

AT

4:00P. M.

FEE

1-5.00-1.00X

COMPARED

Jeffrey P. Helland

BLACK HAWK COUNTY RECORDER

HELLAND ENGINEERING & SURVEYING LTD

Jeffrey P. Helland, 1107 Technology Parkway, Cedar Falls, Iowa 50613-6951, (319)-266-0161

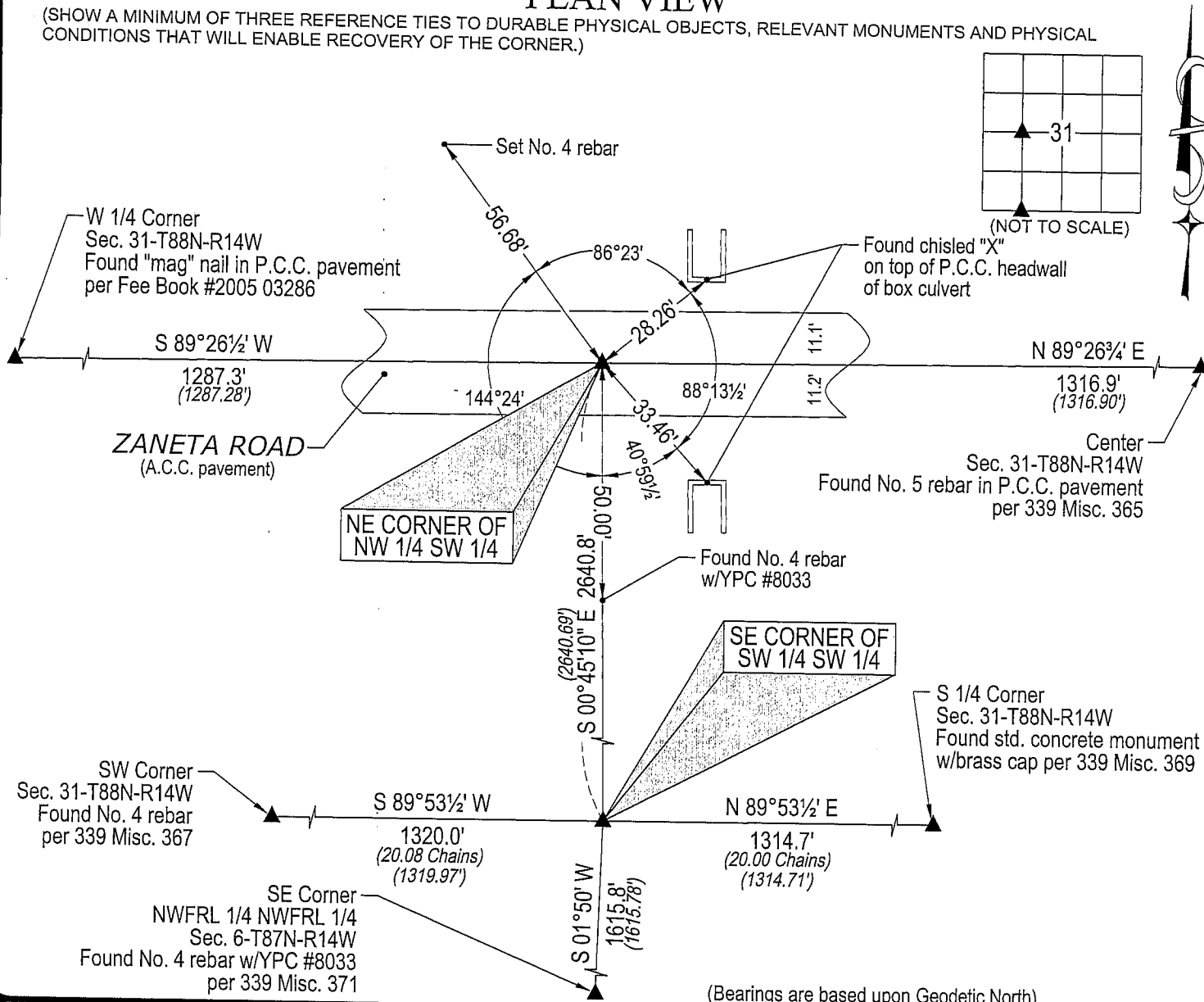
UNITED STATES PUBLIC LAND SURVEY CORNER CERTIFICATE
OFLAND SURVEY MONUMENTS SITUATED IN SECTION NO. 31, TOWNSHIP NO. 88 NORTH, RANGE
NO. 14 WEST OF THE FIFTH PRINCIPAL MERIDIAN, BLACK HAWK COUNTY, IOWA.
PREVIOUSLY RECORDED IN 339 Misc. 373(SHOW REASON FOR PREPARING THIS CERTIFICATE, THE EVIDENCE AND DETAILED PROCEDURES USED IN ESTABLISHING THE
CORNER POSITIONS AND MONUMENTATION FOUND OR PLACED.)

MONUMENT DESCRIPTION AND REMARKS:

No USPLSCC on file for NE CORNER OF NWFRL 1/4 SWFRL 1/4. Monumentation per 339 Misc. 373 has changed.
Survey completed in the SWFRL 1/4 of Sec. 31-T88N-R14W and the NWFRL 1/4 of Sec. 6-T87N-T14W.

- NE CORNER OF NWFRL 1/4 SWFRL 1/4: No Black Hawk County Engineer reference ties available. Found "P-K" nail in A.C.C. pavement as established by F. William King #8033 per Plat of Survey dated 7/18/2000 recorded in 339 Misc. 363.
- SE CORNER OF SWFRL 1/4 SWFRL 1/4: 339 Misc. 373 calls for "No. 4 rebar w/YPC #8033" as established by F. William King #8033 per Plat of Survey dated 7/18/2000 recorded in 339 Misc. 363. Corner has been obliterated (in cultivated field). Set No. 4 rebar w/OPC #16264 on line between the SW Corner and the S 1/4 Corner per said Plat of Survey. No durable physical objects to reference, N-S fence and trees have been removed.

PLAN VIEW

(SHOW A MINIMUM OF THREE REFERENCE TIES TO DURABLE PHYSICAL OBJECTS, RELEVANT MONUMENTS AND PHYSICAL
CONDITIONS THAT WILL ENABLE RECOVERY OF THE CORNER.)

(Bearings are based upon Geodetic North)

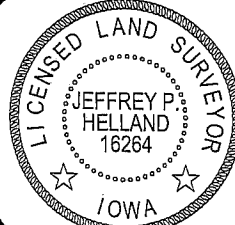


HELLAND ENGINEERING & SURVEYING, LTD.

1107 Technology Parkway
Cedar Falls, Iowa 50613-6951
(319)-266-0161shiner = 8d nail & 1 15/16"Ø metal shiner
OPC = Plastic cap (O=orange, R=red, Y=yellow)

(00') Recorded As

File Name: 06-133c1.dwg

I hereby certify that this land surveying document was prepared
and the related survey work was performed by me or under my
direct personal supervision and that I am a duly licensed Land
Surveyor under the laws of the State of Iowa.*Jeffrey P. Helland*
Jeffrey P. Helland
License Number 16264My license renewal date is December 31, 2007.
All pages or sheets are covered by this seal except:

LIST CORNERS TO BE INDEXED

CORNER	SECTION	TOWNSHIP	RANGE
NE CORNER NW 1/4 SW 1/4	31	88N	14W
SE CORNER SW 1/4 SW 1/4	31	88N	14W