

*Jeffrey P. Helland*

BLACK HAWK COUNTY RECORDER

HELLAND ENGINEERING &amp; SURVEYING LTD 1107 TECHNOLOGY PARKWAY CEDAR FALLS IA 50613

Jeffrey P. Helland, 1107 Technology Parkway, Cedar Falls, Iowa 50613-6951, (319)-266-0161

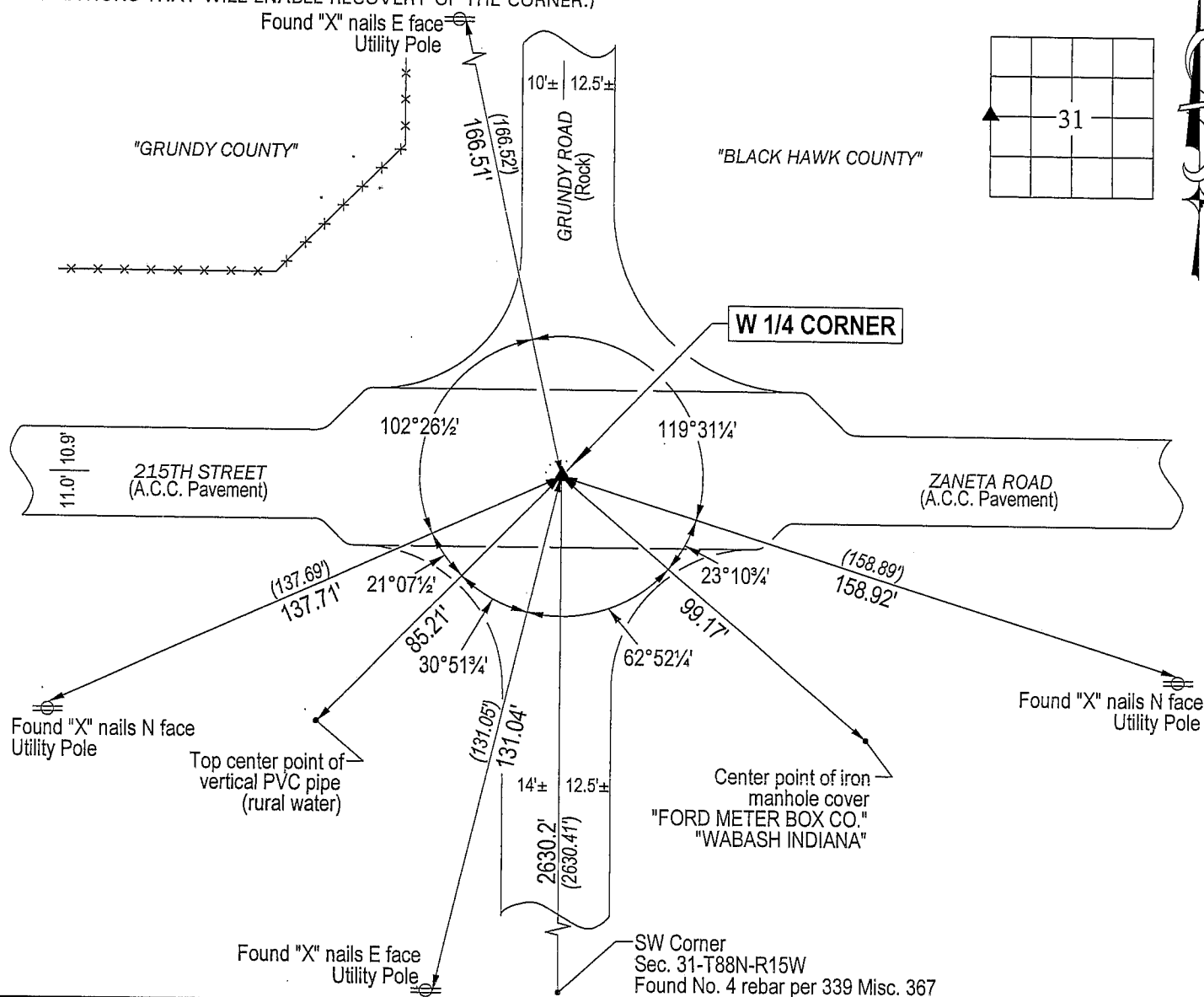
UNITED STATES PUBLIC LAND SURVEY CORNER CERTIFICATE  
OFLAND SURVEY MONUMENTS SITUATED IN SECTION NO. 31, TOWNSHIP NO. 88 NORTH, RANGE  
NO. 14 WEST OF THE FIFTH PRINCIPAL MERIDIAN, BLACK HAWK COUNTY, IOWA.  
PREVIOUSLY RECORDED IN BOOK 339, PAGE 366.(SHOW REASON FOR PREPARING THIS CERTIFICATE, THE EVIDENCE AND DETAILED PROCEDURES USED IN ESTABLISHING THE  
CORNER POSITIONS AND MONUMENTATION FOUND OR PLACED.)

## MONUMENT DESCRIPTION AND REMARKS:

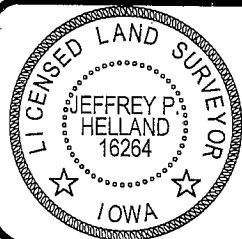
Monumentation has changed from 339 Misc. 366. Survey completed in the SWFRL 1/4 of Sec. 31-T88N-R15W.

→ W 1/4 CORNER: 339 Misc. 366 calls for ("P-K" nail &amp; washer in asphalt surface). Road has been overlaid w/A.C.C. since 5/30/2000. All four reference ties per 339 Misc. 366 still remain. Reestablished corner at intersection of four tie distances. Set "mag" nail in A.C.C. pavement.

## PLAN VIEW

(SHOW A MINIMUM OF THREE REFERENCE TIES TO DURABLE PHYSICAL OBJECTS, RELEVANT MONUMENTS AND PHYSICAL  
CONDITIONS THAT WILL ENABLE RECOVERY OF THE CORNER.)HELLAND ENGINEERING & SURVEYING, LTD.  
1107 Technology Parkway  
Cedar Falls, Iowa 50613-6951  
(319)-266-0161

(00.00') - Recorded As File Name: 04-247c1.drg

I hereby certify that this land surveying document was prepared  
and the related survey work was performed by me or under my  
direct personal supervision and that I am a duly licensed Land  
Surveyor under the laws of the State of Iowa.*Jeffrey P. Helland* 8/6/04  
Jeffrey P. Helland  
License Number 16264My license renewal date is December 31, 2005.  
All pages or sheets are covered by this seal except:

## LIST CORNERS TO BE INDEXED

CORNER	SECTION	TOWNSHIP	RANGE
W 1/4 CORNER	31	88N	14W