

001303

BLACK HAWK COUNTY IOWA:SS

Filed for record JUL 20, 2000 at
1:00 P.M. and recorded in Book

of _____ Page _____

INDEX
MARGIN
PROOF
COMPAREof Wayne Claassen RECORDER

FEE 1-5.00/

WAYNE CLAASSEN ENGINEERING AND SURVEYING INC

WAYNE CLAASSEN ENGINEERING AND SURVEYING, INC.
P.O. BOX 898 WATERLOO, IOWA 50704-0898PHONE: (VOICE) 319-235-6294
(FAX) 319-235-0028

UNITED STATES PUBLIC LAND SURVEY CORNER CERTIFICATE

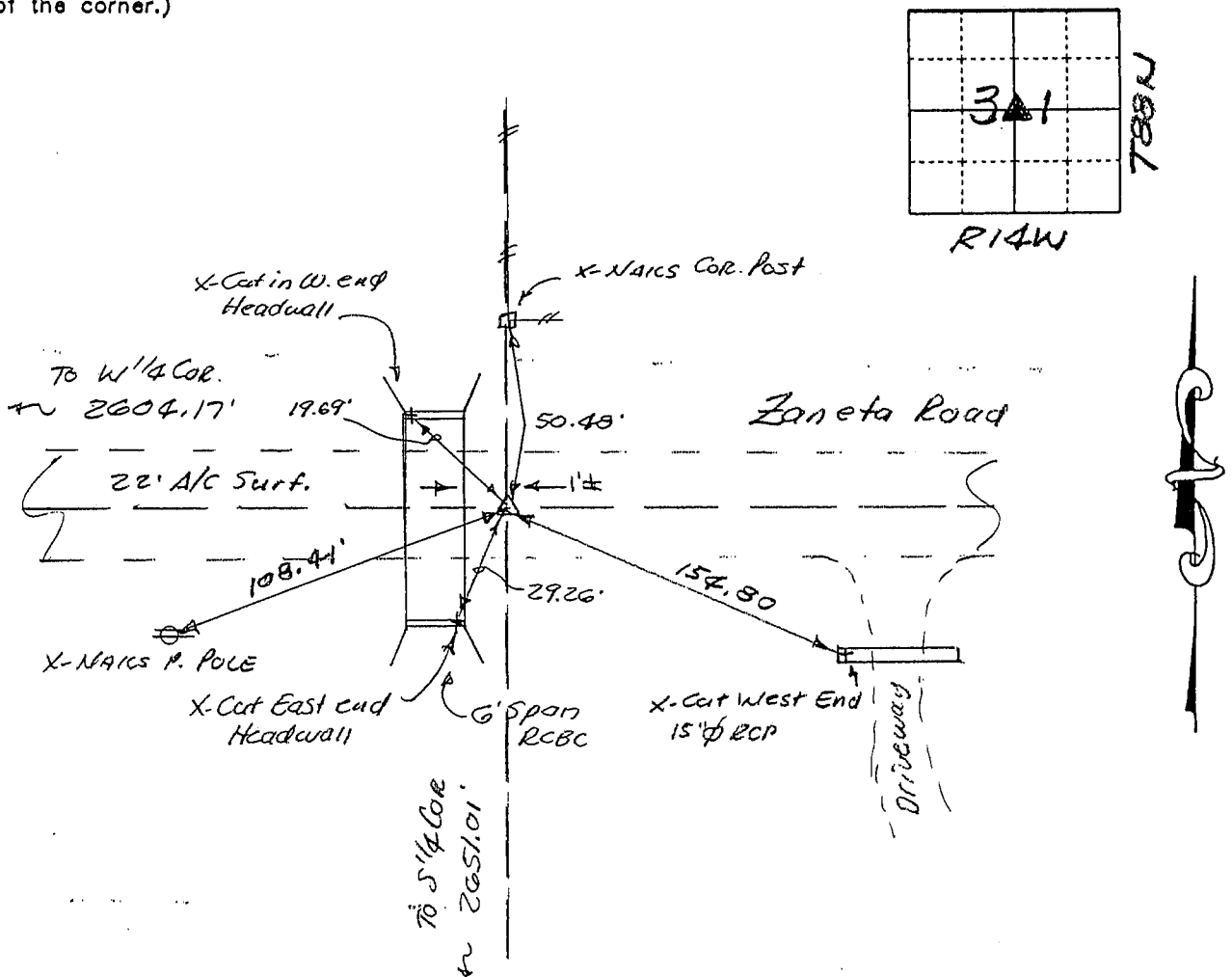
and Survey Monuments situated in Section 31, Township 88N, Range 14W, of the Fifth Principal Meridian, BLACK HAWK County, Iowa.Previously recorded in N/A in County Recorder's Office.
(book, page, document number, etc.)

Show reason for preparing this certificate, the evidence and detailed procedures used in establishing the corner positions and monumentation found or placed.)

Monument Description and Remarks Found 5/8" bar in Asphalt surface per B.H. Co. ties.

PLAN - VIEW

Show a minimum of three reference ties to durable physical objects, relevant monuments and physical conditions that will enable recovery of the corner.)

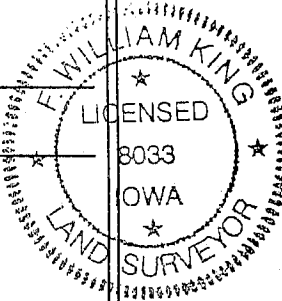


484-49

I hereby certify that the survey work was completed and this certificate was prepared by me or under my direct personal supervision and that I am a duly licensed land surveyor under the laws of the state of Iowa.

Signature: F. William King(Name typed or printed:) F. William KingDate: July 3, 2000Lic. No. 8033

SEAL



List Corners to be Indexed

Corners	Section	Twp	Range
Center	31	88N	14W

BOOK 339 PAGE 365