

**U.S. (IA.) PUBLIC LAND SURVEY  
CORNER CERTIFICATE** (Ia. 355.11)  
**B.H. Co. PROJECT: GRUNDY RD. LAND COR.'s**  
GRUNDY RD. DEVELOPMENT PROJECT (HWY. 20 to ZANETA RD.)  
LAND CORNER SURVEY FOR ALIGNMENT AND PRELIM. DESIGN

Doc ID: 007549200001 Type: GEN  
Recorded: 02/02/2017 at 03:41:51 PM  
Fee Amt: \$0.00 Page 1 of 1  
Black Hawk County Iowa  
SANDIE L. SMITH RECORDER  
File **2017-00013935**

**INDEX OF ABBREVIATIONS**

(M) = "Measured" Dimension  
(P) = "Platted" Dimension  
(R) = "Record" Dimension  
(C) = "Calculated" Dimension  
"IGS" = Iowa Geodetic Survey  
"WPA" = Works Progress Admin. Surveys (late 1930's to early 1940's)  
"G" = per George Miller Survey (BHco Surveyor 1858-1860)  
"B" = per John Ball Survey (BHco Surveyor 1866-1891)  
"N" = per Nathan Barber Survey (BHco Surveyor 1908-1931)  
"NP" = Reflectorless EDM Meas  
"MLM" = Indirect Measure  
"CM" = Concrete Monument  
"SM" = Survey Marker Spike/Tag  
"PK" = PK/MAG Nail Brand Style

COUNTY RECORDER USE "ONLY": (Ia. 331.606B(3A)(b))

Land Survey Monument(s) situated in Section 30, Township 88 N., Range 14 W., of the Fifth Principal Meridian (5th P.M.), BLACK HAWK County, Iowa.  
Previously recorded in FILE (Doc.) Book 2016, Page 012132, in County Recorder's Office.  
(Show reason for preparing this certificate): Herein accepting a corner position which differs from that shown in current public records with County Recorder, per Ia. Code 355.11(1)(b).

(Evidence and detailed procedures used in establishing the corner position(s) and monumentation found or placed.)

Monument Description and Remarks: W. 1/4 COR.:

CURRENT CORNER CERT. CALLS FOR "FOUND #5 REBAR", YET INITIAL FIELD REVIEW DIDN'T FIT OCCUPATION OF RD. TO WEST (WATTERS RD.) AS SHOWN IN CURRENT CERTIFICATE. NOTICED EXISTING X-NAILS IN COR. POST TO N.E., SO PULLED FOR RECORD. UPON REVIEW OF N. R/W OCCUPATION FENCE ON WATTERS RD., BEGAN TO SEARCH N. OF #5 REBAR AND OBSERVED A "FAINT" SOUNDING OF INTEREST. PROCEEDED TO VERIFY RECORD WPA R.L.M. NOTES WITH S.W. AND N.W. CORNERS OF SAID SECTION, IN ADDITION TO CENTER OF SAID SECTION FOR ASSIST. BASED ON MEAS. OF WEST LINE SAID SECTION VS. W.P.A. NOTES (PRORATED), BEGAN TO EXCAVATE AREA OF INTEREST TO HIST. ELEV. OF C.M. IN B.H. CO. HISTORICAL NOTES AND RECOVERED "W.P.A. C.M." LOCATED ±12" Dp. WITH 1/2" REBAR (PIN) ALONG N.SIDE OF C.M. AT ±1" ABOVE WPA MON. SET 5/8"x10"± REBAR OVER TOP OF C.M. WITH 2"Ø ALUM. CAP STAMPED "B.H.CO. LAND CORNER" JUST BELOW GRAVEL RD. SURFACE, & UPDATED RECORD.

Software: TopSurv v.8.2.3 w/FC-2500

Project Point ID: #1010

**PLAN VIEW**

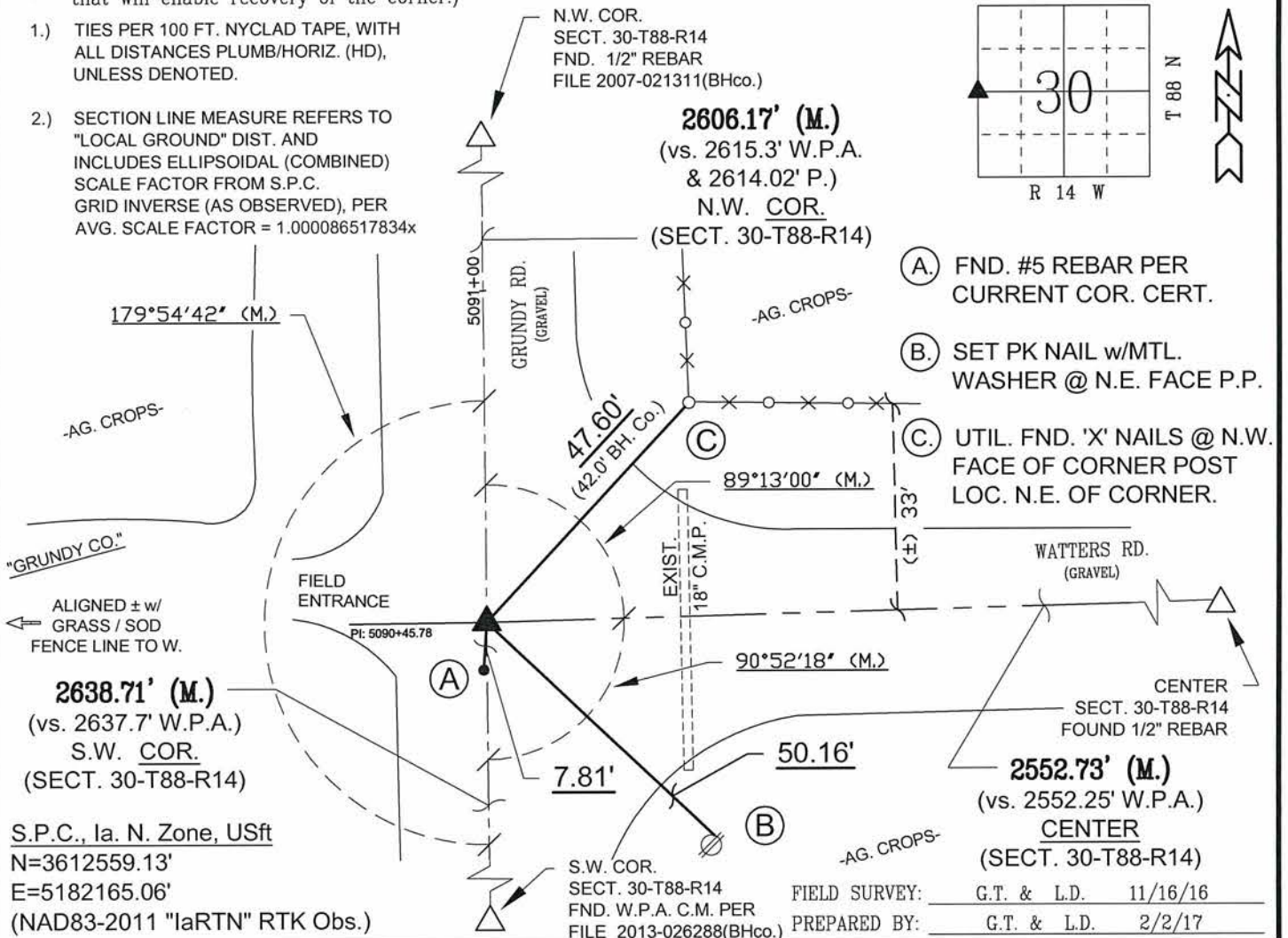
"NOT TO SCALE"

BHco Hist. Ties: Bk. #1001 p.30 88-14

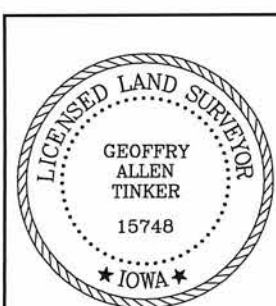
FIELD BOOK: per 100' NyClad Tape / Draft

(Show a minimum of three reference ties to durable physical objects, relevant monuments and physical conditions that will enable recovery of the corner.)

- 1.) TIES PER 100 FT. NYCLAD TAPE, WITH ALL DISTANCES PLUMB/HORIZ. (HD), UNLESS DENOTED.
- 2.) SECTION LINE MEASURE REFERS TO "LOCAL GROUND" DIST. AND INCLUDES ELLIPSOIDAL (COMBINED) SCALE FACTOR FROM S.P.C. GRID INVERSE (AS OBSERVED), PER AVG. SCALE FACTOR = 1.000086517834x



**CERTIFICATION**



I hereby certify that this land surveying document was prepared and the related survey work was performed by me or under my direct personal supervision and that I am a duly licensed Land Surveyor under the laws of the State of Iowa.

*Geoffry Allen Tinker* 02/02/2017  
Geoffry Allen Tinker (date)

License Number 15748

My license renewal date is December 31, 2018

Pages or sheets covered by this seal:

This Land Corner Certificate Only.



**PREPARED BY:**

BLACK HAWK COUNTY  
ENGINEER'S DEPT.  
316 E. FIFTH ST. RM. 211  
WATERLOO, IA. 50703  
PH. 319-833-3008  
FAX. 319-833-3139  
surveyor@co.black-hawk.ia.us