

* Prepared by & Return to: Herold - Reicks Surveying, 2206 East Bremer Avenue, Waverly, IA 50677, Ph. 319-483-5187

UNITED STATES PUBLIC LAND SURVEY CORNER CERTIFICATE

Land Survey Monuments situated in Section 30, Township 88 North, Range 14 West of the Fifth Principal Meridian, **Black Hawk** County, Iowa. Previously not recorded in the County Recorder's office.

This certificate is being prepared in compliance with Iowa Code Chapter 355.11 because:

☒ There is no certificate on file for this corner.

☐ There are no longer three valid ties of record.

☐ There are changes to reference ties of record.

☐ There is change of monumentation of record.

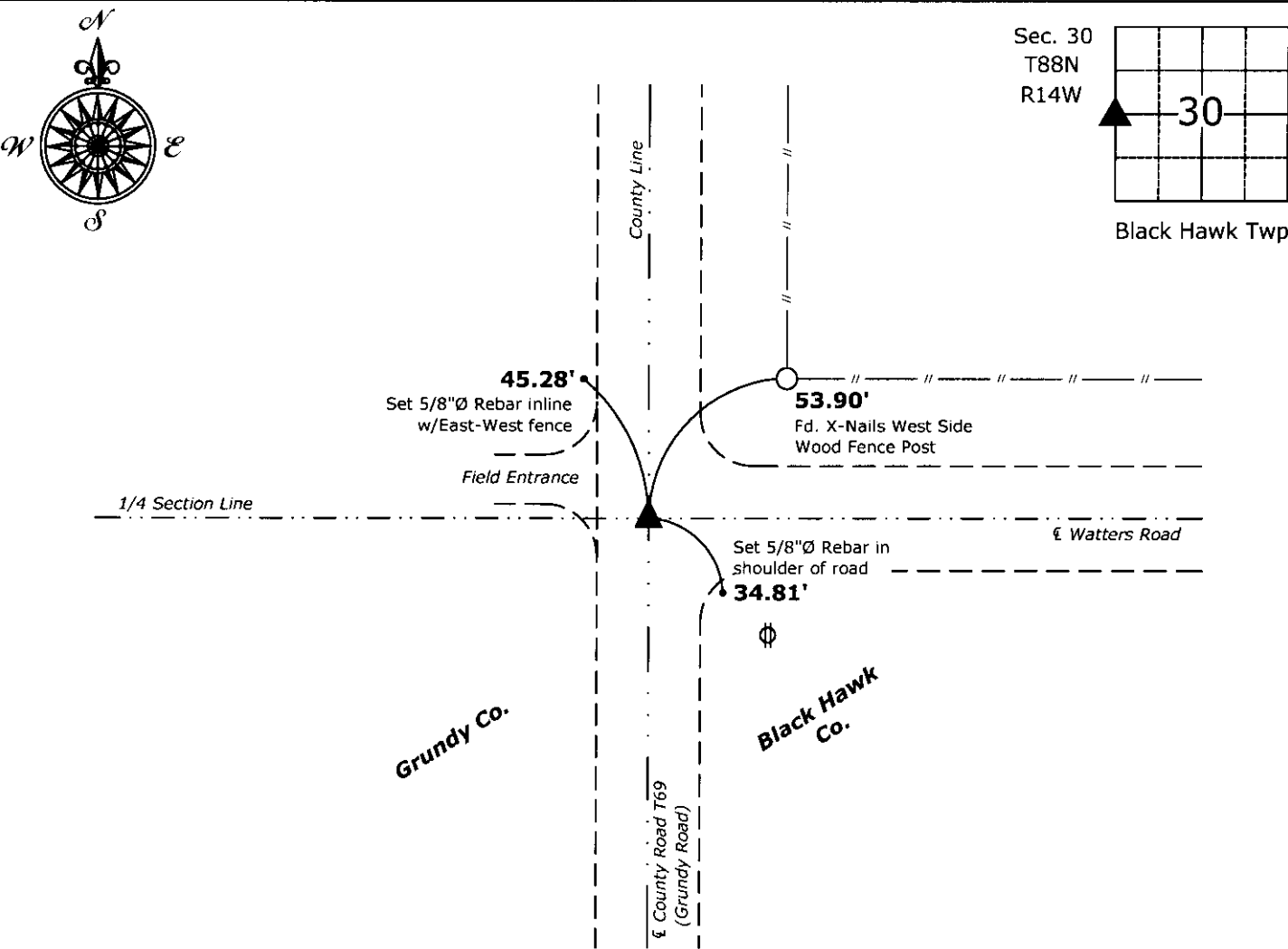
☐ To clarify description of record monument (ties).

Monument Description and Remarks:

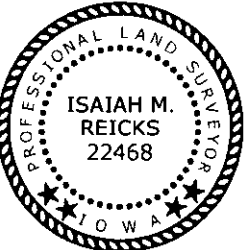
West 1/4 Corner: Grundy County Engineer's section corner tie notes indicates an iron stake over stone (dated August 30, 1935). Found 5/8"Ø iron pin with information obtained from said notes.

PLAN - VIEW

(Show a minimum of three reference ties to durable physical objects, relevant monuments and physical conditions that will enable recovery of the corner.)



West 1/4 Corner Section 30-88-14
Found 5/8"Ø iron pin



I hereby certify that this land surveying document was prepared and the related survey work was performed by me or under my direct personal supervision and that I am a duly licensed Land Surveyor under the laws of the State of Iowa.

Isaiah M. Reicks 1-8-16
Isaiah M. Reicks Date:

License number 22468
My license renewal date is December 31, 2017.
Sheets covered by this seal: Individual sheet only

List Corners to be Indexed			
Corners	Section	Twp.	Range
W 1/4	30	88	14
File Number 2016-00012132 Sec:			
FB: Black Hawk 10, Pgs. 9-10			