

Number: 202300006691
Recorded: 10/25/2022 at 9:54:11.0 AM
County Recording Fee: \$7.00
Iowa E-Filing Fee: \$3.00
Combined Fee: \$10.00
Revenue Tax:
Sandie L. Smith, RECORDER
Black Hawk County, Iowa

Prepared by & Return to: Isaiah M. Reicks, 2206 East Bremer Avenue, Waverly, IA 50677, Ph. 319-483-5187

United States Public Land Survey Corner Certificate

Land Survey Monument situated in
Section 30, Township 88 North, Range 14 West of the Fifth Principal Meridian, Black Hawk County, Iowa.
On file in Document #2007-21311 in the County Recorder's Office.

This certificate is being prepared in compliance with Iowa Code Chapter 355.11 because:

-
- ☐

There is no certificate on file for this corner.
- ☐
- There are no longer three valid ties of record.

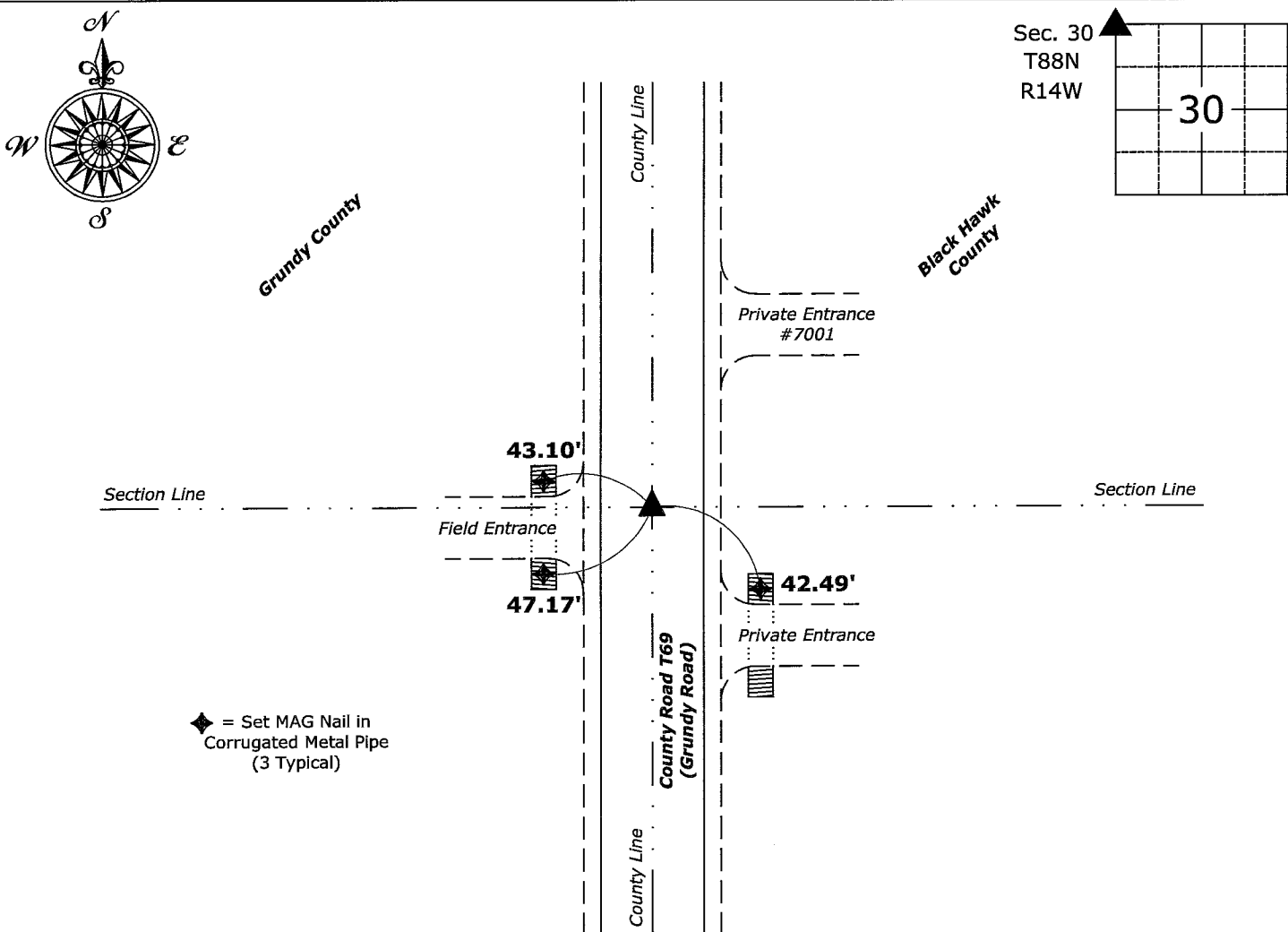
☐☒☐

Monument Description and Remarks:

Northwest Corner: Found 1/2"Ø Rebar with information obtained from the previously recorded Section Corner Certificate. Set 1"Ø Bronze Survey Marker PLS 22468 with coordinates of the found location obtained prior to highway reconstruction. Corner reset in conjunction with Project No. LFM-5008--7X-07.

Plan View

(Show a minimum of three reference ties to durable physical objects, relevant monuments and physical conditions that will enable recovery of the corner.)



Northwest Corner of Section 30-88-14
Set 1"Ø Bronze Survey Marker PLS 22468



I hereby certify that this land surveying document was prepared and the related survey work was performed by me or under my direct personal supervision and that I am a duly licensed Land Surveyor under the laws of the State of Iowa.

Isaiah M. Reicks 10-25-22
Isaiah M. Reicks Date:
License number 22468
My license renewal date is December 31, 2023.
Sheets covered by this seal: Individual sheet only

List Corner to be Indexed			
Corner	Section	Twp.	Range
NW	30	88	14
Project Number: 2021-806			
FB: 2021-806			