

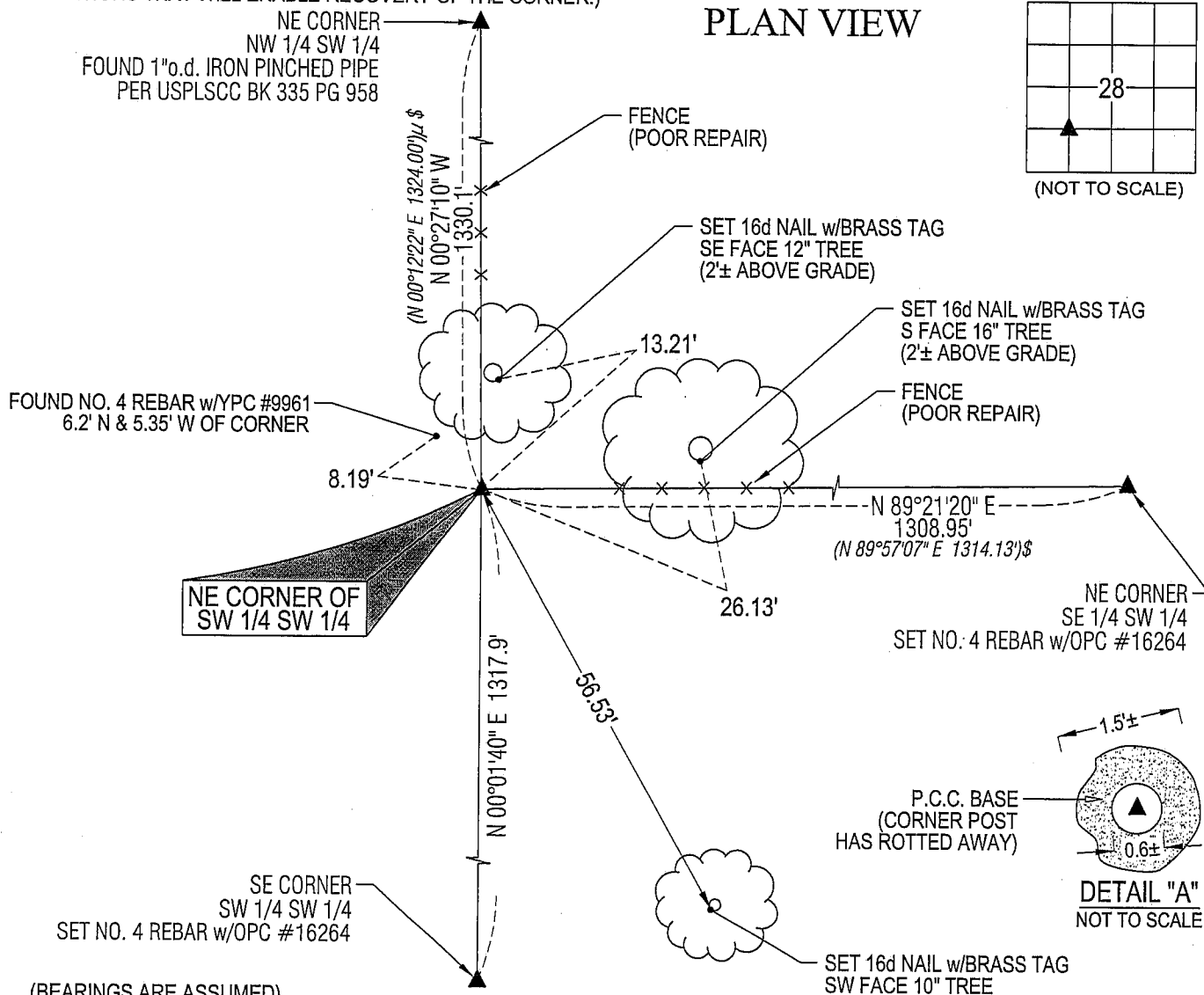
Jeffrey P. Helland, 1107 Technology Parkway, Cedar Falls, Iowa 50613-6951, (319)-266-0161

UNITED STATES PUBLIC LAND SURVEY CORNER CERTIFICATE
OFLAND SURVEY MONUMENTS SITUATED IN SECTION NO. 28, TOWNSHIP NO. 88 NORTH, RANGE
NO. 14 WEST OF THE FIFTH PRINCIPAL MERIDIAN, BLACK HAWK COUNTY, IOWA.PREVIOUSLY RECORDED IN N/A(SHOW REASON FOR PREPARING THIS CERTIFICATE, THE EVIDENCE AND DETAILED PROCEDURES USED IN ESTABLISHING THE
CORNER POSITIONS AND MONUMENTATION FOUND OR PLACED.)

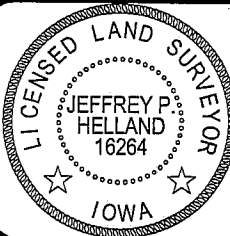
MONUMENT DESCRIPTION AND REMARKS:

NO USPLSCC ON FILE. SURVEY COMPLETED IN THE SE 1/4 SW 1/4 OF SEC. 28-T88N-R14W & IN THE NE 1/4 NW
1/4 SEC. 33-T88N-R14W.

→ **NE CORNER SW 1/4 SW 1/4:** NO BLACK HAWK COUNTY ENGINEER REFERENCE TIES AVAILABLE. PLAT OF
SURVEY DOC. #2008 019015 DATED 8/11/2000 CALLS FOR [1/2" IRON PIN & CAP SET]. FOUND NO. 4 REBAR
w/YPC #9961 THAT WAS APPARENTLY SET AT INTERTSECTION OF 1/4 1/4 CORNERS. SAID REBAR DOES NOT
CORRESPOND WITH FENCES. EXTRAPOLATED FENCES AND SEARCHED AREA. FOUND P.C.C. BASE OF OLD
CORNER POST 0.5'± DEEP. CORNER POST HAS ROTTED AWAY, BUT P.C.C. IS IN GOOD CONDITION. SET NO. 4
REBAR w/OPC #16264 @ CL P.C.C. BASE. PLAT BOOK PUBLISHED BY THE IOWA PUBLISHING CO. DATED
2/11/1910 INDICATES FOUR DIFFERENT PROPRIETORS SURROUNDING SAID CORNER. UTILIZED SAID SET NO.
4 REBAR w/OPC #16264 AS CORNER. SEE DETAIL "A" FOR ADDITIONAL INFORMATION.

(SHOW A MINIMUM OF THREE REFERENCE TIES TO DURABLE PHYSICAL OBJECTS, RELEVANT MONUMENTS AND PHYSICAL
CONDITIONS THAT WILL ENABLE RECOVERY OF THE CORNER.)

(BEARINGS ARE ASSUMED)

HELLAND ENGINEERING & SURVEYING, LTD.
1107 Technology Parkway
Cedar Falls, Iowa 50613-6951
(319)-266-0161SHINER = 8D NAIL & 1 5/16"Ø METAL SHINER
BRASS TAG = 13/16"Ø BRASS TAG
OPC = PLASTIC CAP (O=ORANGE, R=RED, Y=YELLOW)
(00') RECORDED AS FILE NAME: 08-147C4.DWGI hereby certify that this land surveying document was prepared
and the related survey work was performed by me or under my
direct personal supervision and that I am a duly licensed Land
Surveyor under the laws of the State of Iowa.

Jeffrey P. Helland 4/21/08
Jeffrey P. Helland
License Number 16264
My license renewal date is December 31, 2009.
All pages or sheets are covered by this seal except:

CORNER	SECTION	TOWNSHIP	RANGE
NE CORNER SW 1/4 SW 1/4	28	88N	14W