

Kirk D. Eschliman, P.L.S. Iowa Lic. No. 9961, 723 Broadway Street, Waterloo, Iowa 50703 - Phone: 319-234-0509

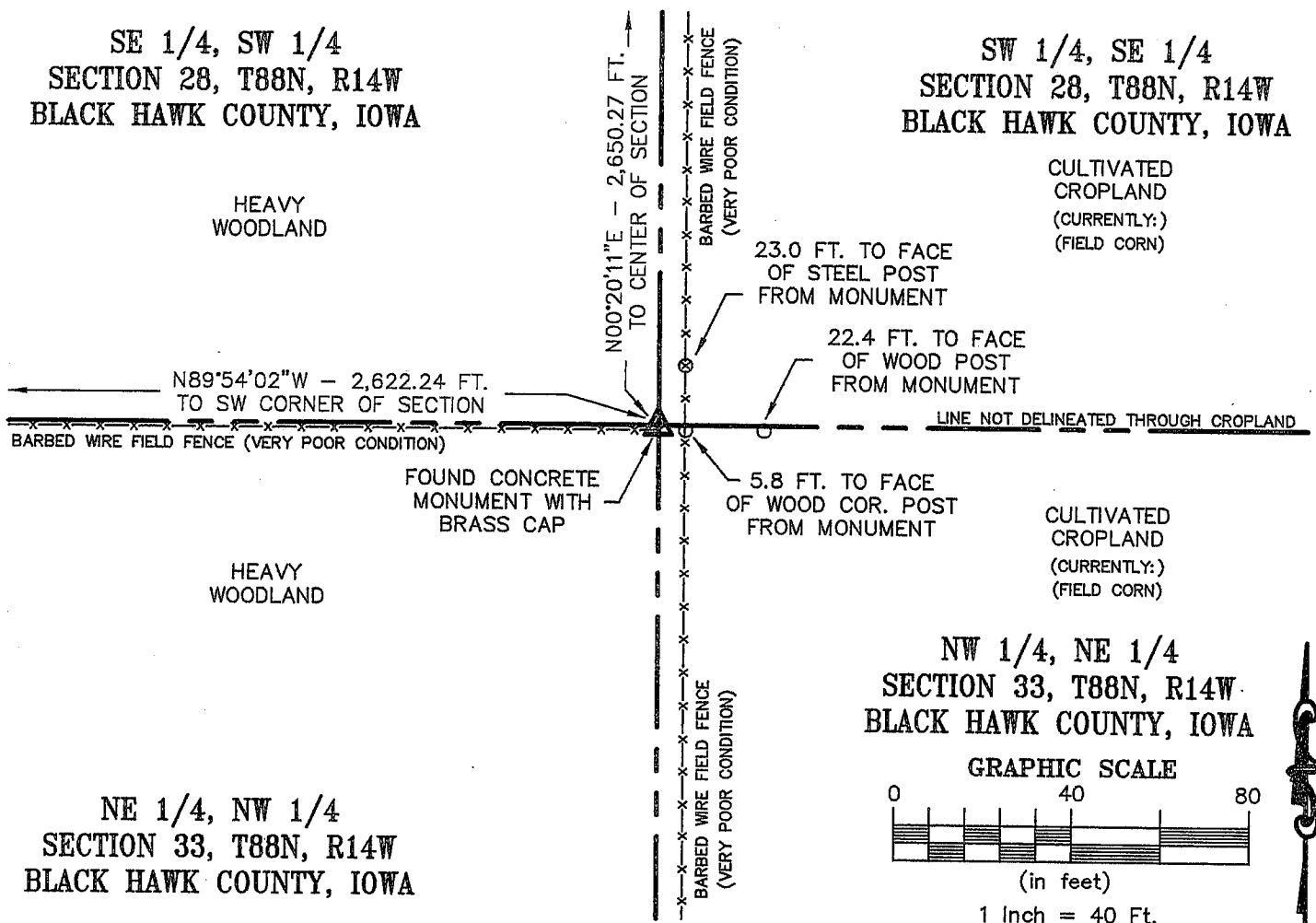
UNITED STATES PUBLIC LAND SURVEY CORNER CERTIFICATE  
OF

LAND SURVEY MONUMENTS SITUATED IN SECTION 28, TOWNSHIP EIGHTY-EIGHT(88)NORTH, RANGE FOURTEEN(14)WEST, OF THE FIFTH PRINCIPAL MERIDIAN, BLACK HAWK COUNTY, IOWA. PREVIOUSLY RECORDED IN (NOT PREVIOUSLY RECORDED) (BOOK, PAGE, DOCUMENT NUMBER, ETC.) IN THE COUNTY RECORDER'S OFFICE.

(SHOW REASON FOR PREPARING THIS CERTIFICATE, THE EVIDENCE AND DETAILED PROCEDURES USED IN ESTABLISHING THE CORNER POSITIONS AND MONUMENTATION FOUND OR PLACED.)

MONUMENT DESCRIPTION AND REMARKS: FOUND CONCRETE MONUMENT WITH BRASS CAP, MARKED AS COMMON CORNER FOR SECTIONS 28, & 33. MONUMENT CONTAINS NO MAGNETIC MATERIAL. TOP OF MONUMENT WAS LOCATED 6.5 INCHES ABOVE CURRENT GROUND SURFACE.

## PLAN - VIEW



I HEREBY CERTIFY THAT THIS LAND SURVEYING DOCUMENT WAS PREPARED AND RELATED SURVEY WORK WAS PERFORMED BY ME OR UNDER MY DIRECT PERSONAL SUPERVISION AND THAT I AM A DULY LICENSED LAND SURVEYOR UNDER THE LAWS OF THE STATE OF IOWA.

*Kirk D. Eschliman* DATE: 08/11/00  
KIRK D. ESCHLIMAN, P.L.S. IOWA LIC. NO. 9961  
MY LICENSE RENEWAL DATE IS DECEMBER 31, 2001  
PAGES OR SHEETS COVERED BY THIS SIGNATURE & SEAL: SHEET 1 OF 1

FOR: LYLE D. TAYLOR  
6721 WATTERS ROAD  
BLACK HAWK COUNTY, IOWA

REQ. BY: LYLE TAYLOR  
WATERLOO, IOWA



**KESS & ASSOCIATES, INC.**  
PROFESSIONAL LAND SURVEYORS : 723 BROADWAY, WATERLOO, IOWA 50703-5811  
DATE: 08/11/00 C.A.D.D. FILE: 00B14CCB.DWG PROJECT NO.: 00B14

## List of corners to be indexed:

Corners	Section	Township	Range
S 1/4	28	T88N	R14W

## SECTION 28

