

Jeffrey P. Helland, 1107 Technology Parkway, Cedar Falls, Iowa 50613-6951, (319)-266-0161

UNITED STATES PUBLIC LAND SURVEY CORNER CERTIFICATE
OFLAND SURVEY MONUMENTS SITUATED IN SECTION NO. 28, TOWNSHIP NO. 88 NORTH, RANGE
NO. 14 WEST OF THE FIFTH PRINCIPAL MERIDIAN, BLACK HAWK COUNTY, IOWA.PREVIOUSLY RECORDED IN N/A(SHOW REASON FOR PREPARING THIS CERTIFICATE, THE EVIDENCE AND DETAILED PROCEDURES USED IN ESTABLISHING THE
CORNER POSITIONS AND MONUMENTATION FOUND OR PLACED.)

MONUMENT DESCRIPTION AND REMARKS:

NO USPLSCC ON FILE. SURVEY COMPLETED IN THE NE 1/4 OF THE SW 1/4 OF SEC. 27-T88N-R14W.

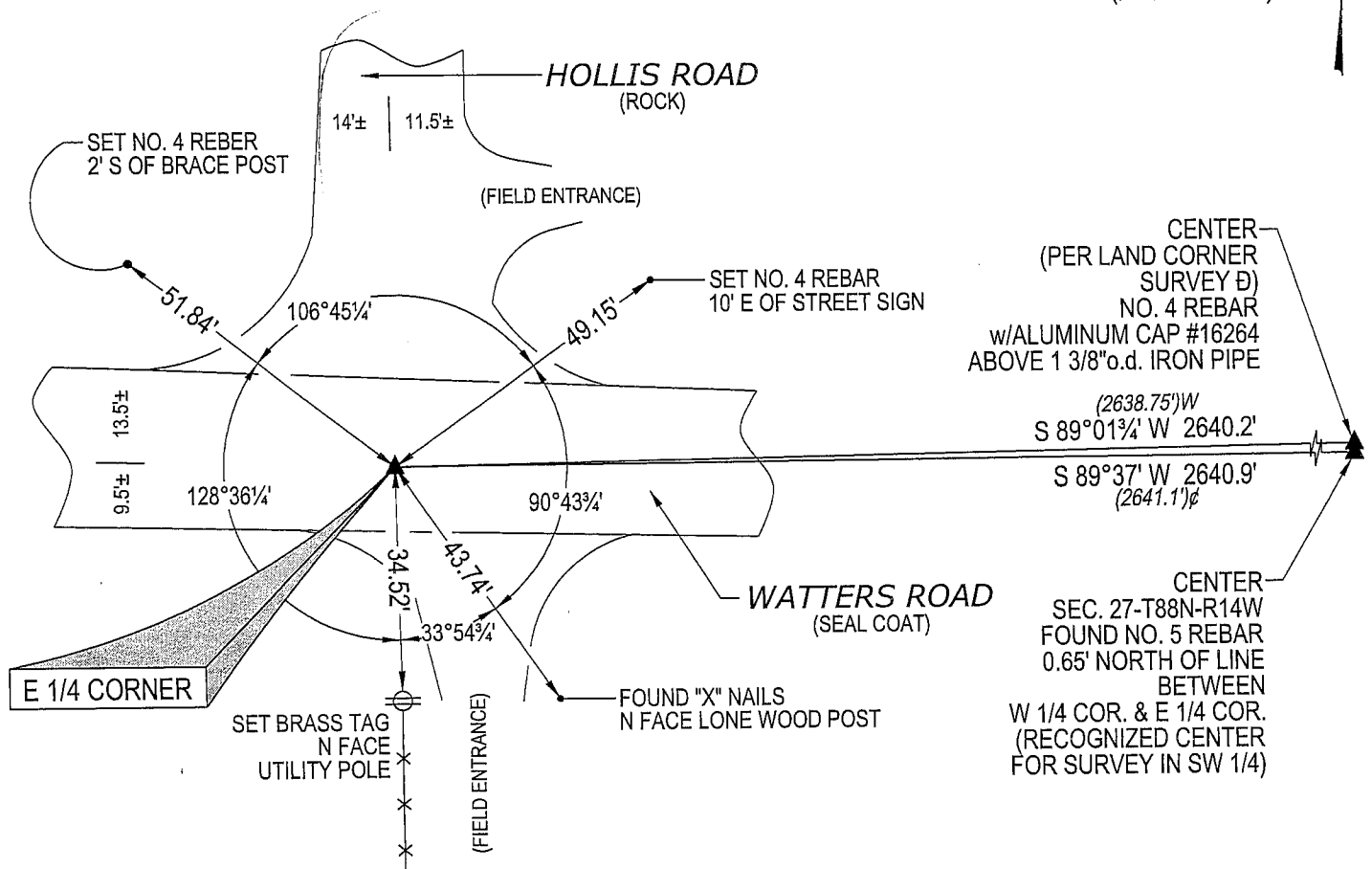
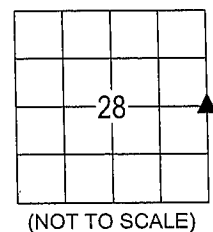
→ **E 1/4 CORNER:** ALL BLACK COUNTY ENGINEER REFERENCE TIES HAVE BEEN OBLITERATED. WPA CHAINING
NOTES CALLS FOR [DUG HOLE 30"x20"x4", FOUND NOTHING. ESTAB. COR. BY PRORATING DIST. ACCORDING
TO OLD SURVEY RECORDS OF N. BARBER & JOHN BALL, 2638.75' W. OF CTR. STONE SEC. 27-AND 2643.62' S.
OF N.E. COR SEC. 28 AND 2644.05' N. OF S.E. COR. SEC. 28. LOCAL EVIDENCE OF SE. LINE FC & ROAD
INDICATED COR. SHOULD BE WHERE ESTABLISHED ALSO FOUND 6" POINTED LATH ABOUT 2' N.W. OF POINT
SET]. WITH THE HELP OF A BLACK HAWK COUNTY EXCAVATOR, FOUND STD. CONCRETE MONUMENT
w/BRASS CAP 4.6' DEEP. SET NO. 4 REBAR ON NORTH SIDE FOR MAGNETIC DETECTION. SET NO. 4 REBAR
w/ALUMINUM CAP #16264 ABOVE C.M. IN SEAL-COATED ROAD SURFACE.

(SHOW A MINIMUM OF THREE REFERENCE TIES TO DURABLE PHYSICAL OBJECTS, RELEVANT MONUMENTS AND PHYSICAL
CONDITIONS THAT WILL ENABLE RECOVERY OF THE CORNER.)

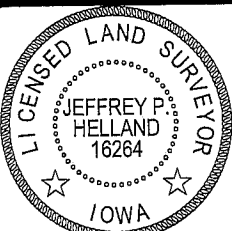
PLAN VIEW

(00.0')W PER WPA CHAINING NOTES

(00.0')E PER ROAD STATIONING ROAD PLANS DATED 1944



(BEARINGS ARE BASED UPON GEODETIC NORTH)

HELLAND ENGINEERING & SURVEYING, LTD.
1107 Technology Parkway
Cedar Falls, Iowa 50613-6951
(319)-266-0161SHINER = 8D NAIL & 1 5/16"Ø METAL SHINER
BRASS TAG = 13/16"Ø BRASS TAG
OPC = PLASTIC CAP (O=ORANGE, R=RED, Y=YELLOW)
(00') RECORDED AS FILE NAME: 07-172C1.DWGI hereby certify that this land surveying document was prepared
and the related survey work was performed by me or under my
direct personal supervision and that I am a duly licensed Land
Surveyor under the laws of the State of Iowa.Jeffrey P. Helland 7/16/07
Jeffrey P. Helland
License Number 16264
My license renewal date is December 31, 2007.
All pages or sheets are covered by this seal except:

LIST CORNERS TO BE INDEXED

CORNER	SECTION	TOWNSHIP	RANGE
E 1/4 CORNER	28	88N	14W