

ENV
*

WAYNE CLAASSEN ENGINEERING AND SURVEYING, INC.
P.O. BOX 898 WATERLOO, IOWA 50704-0898

PHONE: (VOICE) 319-235-6294
(FAX) 319-235-0028

UNITED STATES PUBLIC LAND SURVEY CORNER CERTIFICATE

Land Survey Monuments situated in Section 27, Township 88 North, Range 14 West, of the Fifth Principal Meridian, Black Hawk County, Iowa.

Previously recorded in _____ in County Recorder's Office.
(book, page, document number, etc.)

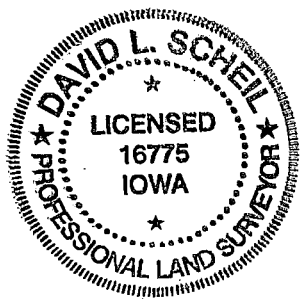
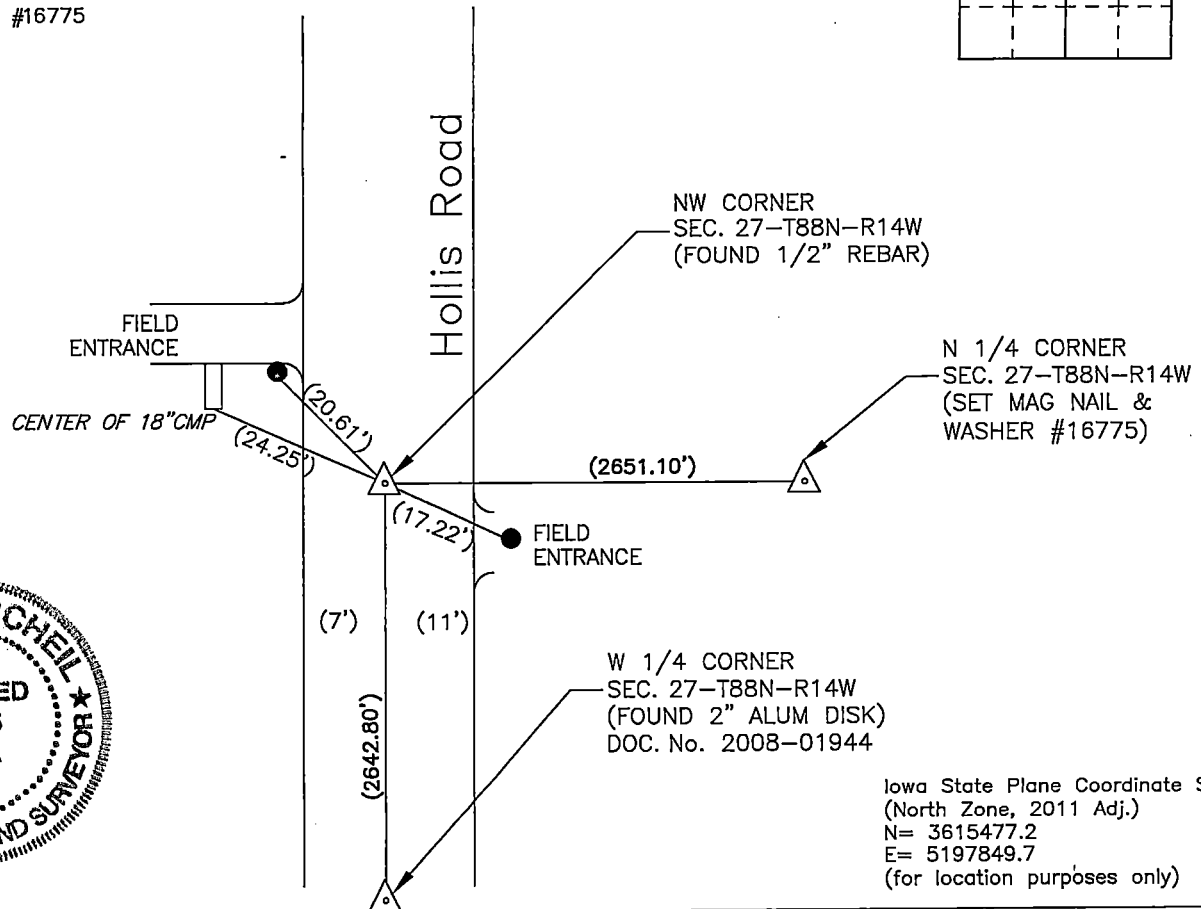
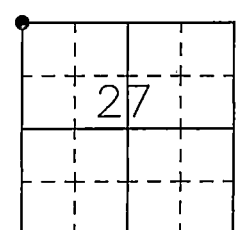
Monument Description and Remarks

The following note is from Black Hawk County Engineer's Office dated Oct. 27, 1938: "found nigger head 21x14x12 also bolt 1/2"x8" threaded on both ends lowered evidence and set CM on top 12" underground." Found 1/2" rebar at reasonable location of section corner,

Reason for filing certificate:

- ☒ There is no certificate on file with the Recorder's Office.
- ☐ Accepts corner position which differs from the one shown in above document.
- ☐ The corner monument was replaced or modified.
- ☐ The reference ties in above document were incorrect or missing.

● - DENOTES SET 0.5"x24" IRON PIN
& RED CAP #16775



Iowa State Plane Coordinate System
(North Zone, 2011 Adj.)
N= 3615477.2
E= 5197849.7
(for location purposes only)

I hereby certify that this land surveying document was prepared and the related survey work was performed by me or under my direct personal supervision and that I am a duly Licensed Land Surveyor under the laws of the State of Iowa.

Signature: David L. Scheil
David L. Scheil, L.S.

Date: March 16, 2021 Lic. No. 16775

Pages or Sheets Covered by this Seal: THIS SHEET ONLY.

My license renewal date is December 31, 2020

SEAL

List Corners to be Indexed

Corners	Section	Twp	Range
NW CORNER,	27	88 N	14 W
NE CORNER,	28	88 N	14 W
SW CORNER,	22	88 N	14 W
SE CORNER,	21	88 N	14 W