

Paul H. Helland, 1107 Technology Parkway, Cedar Falls, Iowa 50613-6951, (319)-266-0161

UNITED STATES PUBLIC LAND SURVEY CORNER CERTIFICATE  
OF

LAND SURVEY MONUMENTS SITUATED IN SECTION NO. 27, TOWNSHIP NO. 88 NORTH, RANGE NO. 14 WEST OF THE FIFTH PRINCIPAL MERIDIAN, BLACK HAWK COUNTY, IOWA.  
PREVIOUSLY RECORDED IN N/A

(SHOW REASON FOR PREPARING THIS CERTIFICATE, THE EVIDENCE AND DETAILED PROCEDURES USED IN ESTABLISHING THE CORNER POSITIONS AND MONUMENTATION FOUND OR PLACED.)

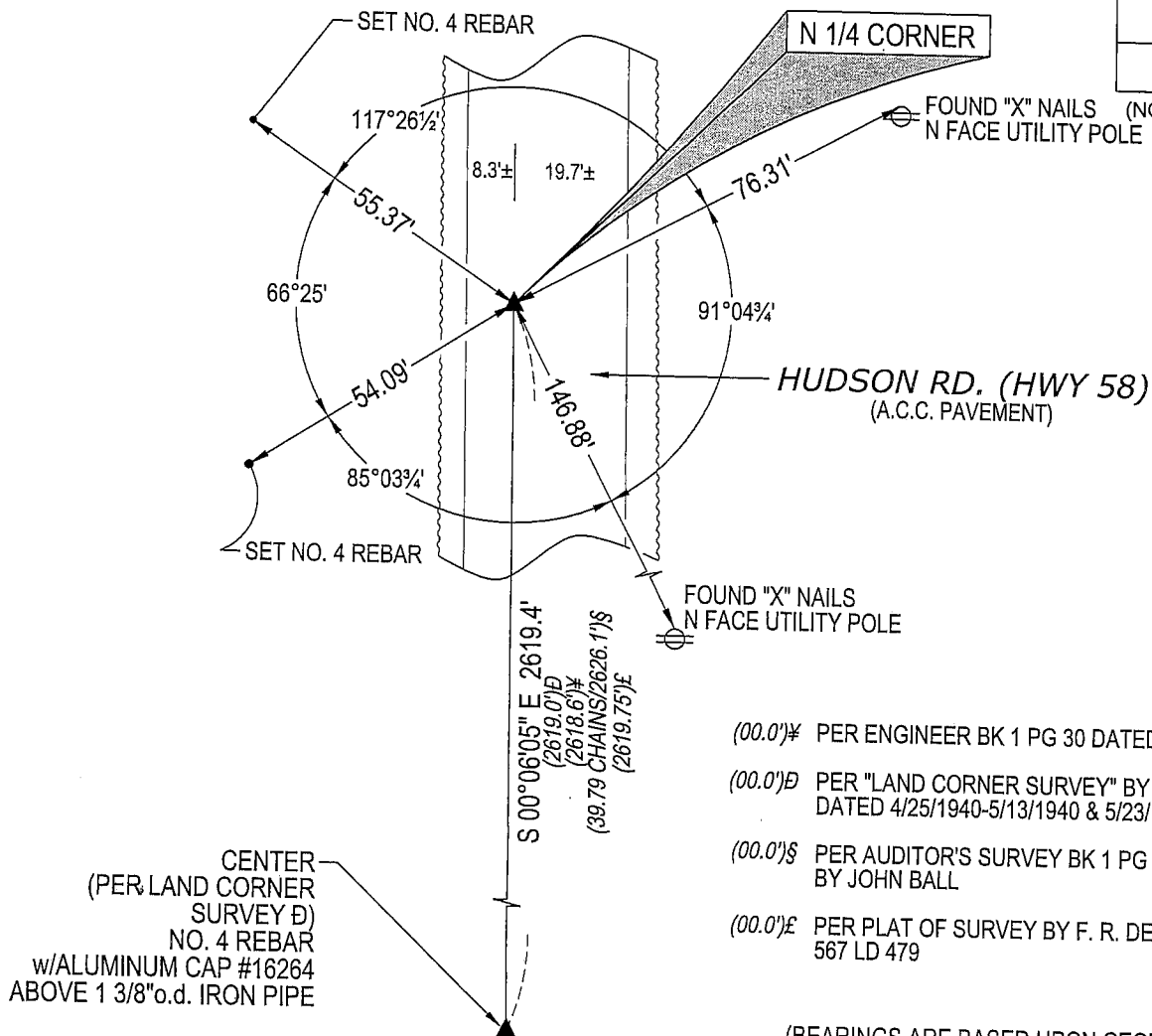
MONUMENT DESCRIPTION AND REMARKS:

NO USPLSCC ON FILE. SURVEY COMPLETED IN THE NE 1/4 OF THE SW 1/4 OF SEC. 27-T88N-R14W.

N 1/4 CORNER: "LAND CORNER SURVEY" BY G.R. ELLIOTT #1841 DATED 4/25/1940-5/13/1940 & 5/23/1940-6/4/1940 CALLS FOR [FOUND 11" PIECE CONC POST 24" DEEP ADDED 7/8"x24" IRON PIN UNDER] AND [6.2' LT. STA. 83+83.1]. BLACK HAWK COUNTY ENGINEER REFERENCE TIES INDICATED [S.C.M.]. IOWA HIGHWAY #58 HAS BEEN ELEVATED AND PAVED SEVERAL TIMES. PLAT OF SURVEY BY F. R. DEBE DATED 2/14/1996 RECORDED IN 567 LD 479 UTILIZES CORNER BUT DOES NOT STATE WHAT IT IS. ACQUISITION PLAT BY KENNETH D STARK DATED 2/16/2001 CALLS FOR [FOUND HINGE NAIL]. FOUND "HINGE" NAIL IN A.C.C. PAVEMENT.

PLAN VIEW

(SHOW A MINIMUM OF THREE REFERENCE TIES TO DURABLE PHYSICAL OBJECTS, RELEVANT MONUMENTS AND PHYSICAL CONDITIONS THAT WILL ENABLE RECOVERY OF THE CORNER.)



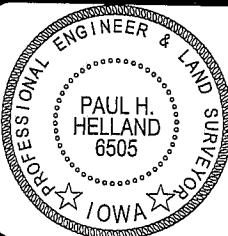
- (00.0')# PER ENGINEER BK 1 PG 30 DATED 8/24/1911  
(00.0')D PER "LAND CORNER SURVEY" BY G.R. ELLIOTT #1841 DATED 4/25/1940-5/13/1940 & 5/23/1940-6/4/1940  
(00.0')S PER AUDITOR'S SURVEY BK 1 PG 67 DATED 8/21/1866 BY JOHN BALL  
(00.0')E PER PLAT OF SURVEY BY F. R. DEBE DATED 2/14/1996 567 LD 479

(BEARINGS ARE BASED UPON GEODETIC NORTH)



HELLAND ENGINEERING & SURVEYING, LTD.  
1107 Technology Parkway  
Cedar Falls, Iowa 50613-6951  
(319)-266-0161

SHINER = 8D NAIL & 1 5/16"Ø METAL SHINER  
BRASS TAG = 13/16"Ø BRASS TAG  
OPC = PLASTIC CAP (O=ORANGE, R=RED, Y=YELLOW)  
(00') RECORDED AS FILE NAME: 07-172C3.DWG



I hereby certify that this land surveying document was prepared and the related survey work was performed by me or under my direct personal supervision and that I am a duly licensed Land Surveyor under the laws of the State of Iowa.

Paul H. Helland  
License Number 6505  
My license renewal date is December 31, 2007.  
All pages or sheets are covered by this seal except:

LIST CORNERS TO BE INDEXED

CORNER	SECTION	TOWNSHIP	RANGE
N 1/4 CORNER	27	88N	14W