

UNITED STATES PUBLIC LAND SURVEY CORNER CERTIFICATE
OF

LAND SURVEY MONUMENTS SITUATED IN SECTION NO. 27, TOWNSHIP NO. 88 NORTH, RANGE NO. 14 WEST OF THE FIFTH PRINCIPAL MERIDIAN, BLACK HAWK COUNTY, IOWA.

PREVIOUSLY RECORDED IN N/A

(SHOW REASON FOR PREPARING THIS CERTIFICATE, THE EVIDENCE AND DETAILED PROCEDURES USED IN ESTABLISHING THE CORNER POSITIONS AND MONUMENTATION FOUND OR PLACED.)

MONUMENT DESCRIPTION AND REMARKS:

SW CORNER NW 1/4 SW 1/4:

NO TIES OF RECORD.

SET NO. 4 REBAR (24" LONG) w/YELLOW PLASTIC CAP #21096 @ MIDPOINT OF A LINE FROM THE SW CORNER TO THE W 1/4 CORNER. CORNER FALLS 1.5± N OF E-W FENCE. THERE IS A CORNER POST 25' EAST WITH FENCE RUNNING NLY, STARTS RUNNING NELY AND THEN NWLY, IN A SORT OF CURVE CONCAVE SWLY.

SE CORNER NE 1/4 SW 1/4:

NO TIES OF RECORD.

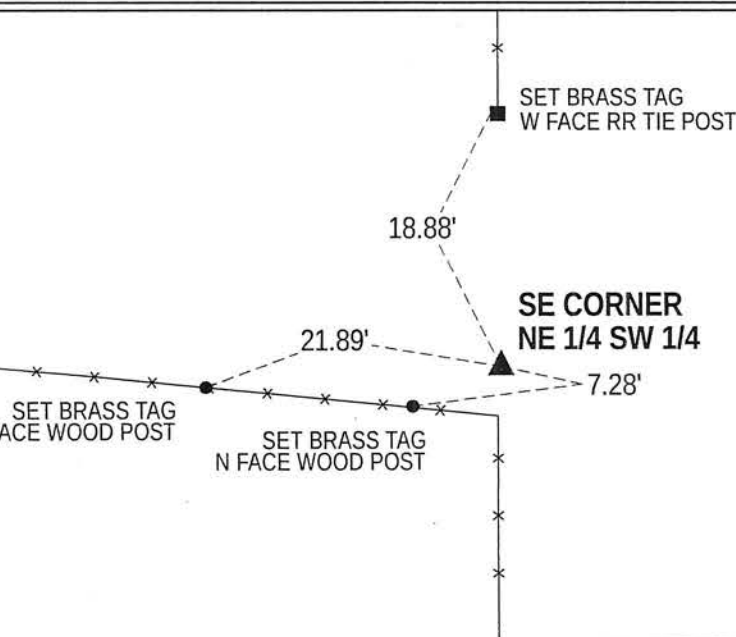
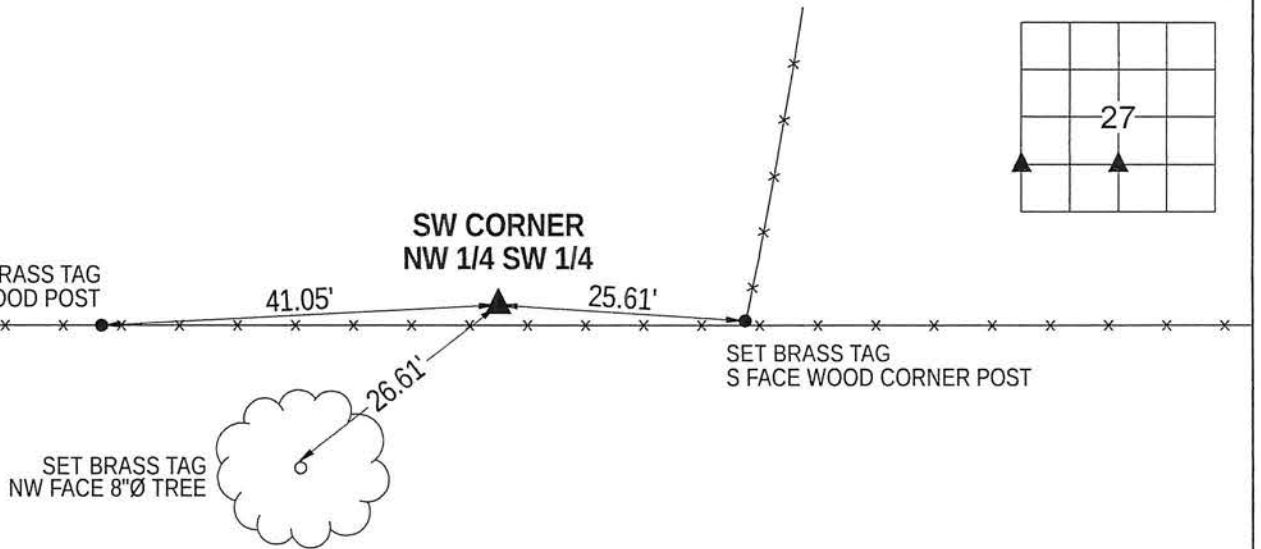
SET NO. 4 REBAR (24" LONG) w/YELLOW PLASTIC CAP #21096 @ MIDPOINT OF A LINE FROM THE S 1/4 CORNER TO THE CENTER. CORNER FALLS IN LINE WITH FENCE RUNNING SOUTH. CORNER IS 4'± NORTH OF A SHORT SEGMENT OF FENCE RUNNING N-NWLY TO EAST SIDE OF CREEK.

THIS USPLSCC IS BEING PREPARED BECAUSE THERE ARE NO USPLSCC'S ON FILE.

PLEASE SEE PLAT OF SURVEY IN THE SW 1/4 OF 27-88-14 FOR BEARINGS AND DISTANCES TO LOCAL SECTION CORNERS & ADDITIONAL MONUMENTS.

PLAN VIEW

(SHOW A MINIMUM OF THREE REFERENCE TIES TO DURABLE PHYSICAL OBJECTS, RELEVANT MONUMENTS AND PHYSICAL CONDITIONS THAT WILL ENABLE RECOVERY OF THE CORNER.)



I hereby certify that this land surveying document was prepared and the related survey work was performed by me or under my direct personal supervision and that I am a duly licensed Land Surveyor under the laws of the State of Iowa.

Ted C. Hoodjer
License Number 21096

10/8/2015
DATE

My license renewal date is December 31, 2015.
All pages or sheets are covered by this seal except:

LIST CORNERS TO BE INDEXED
CORNER SEC-TWP-RNG

SW COR. NW 1/4 SW 1/4	27-88-14
SE COR. NE 1/4 SW 1/4	27-88-14

