

ENTERED  
INDEX BOOK  
2-12-98

WAYNE CLAASSEN ENGINEERING AND SURVEYING, INC.  
P.O. BOX 898 WATERLOO, IOWA 50704-0898

PHONE: (VOICE) 319-235-6294  
(FAX) 319-235-0028

# UNITED STATES PUBLIC LAND SURVEY CORNER CERTIFICATE

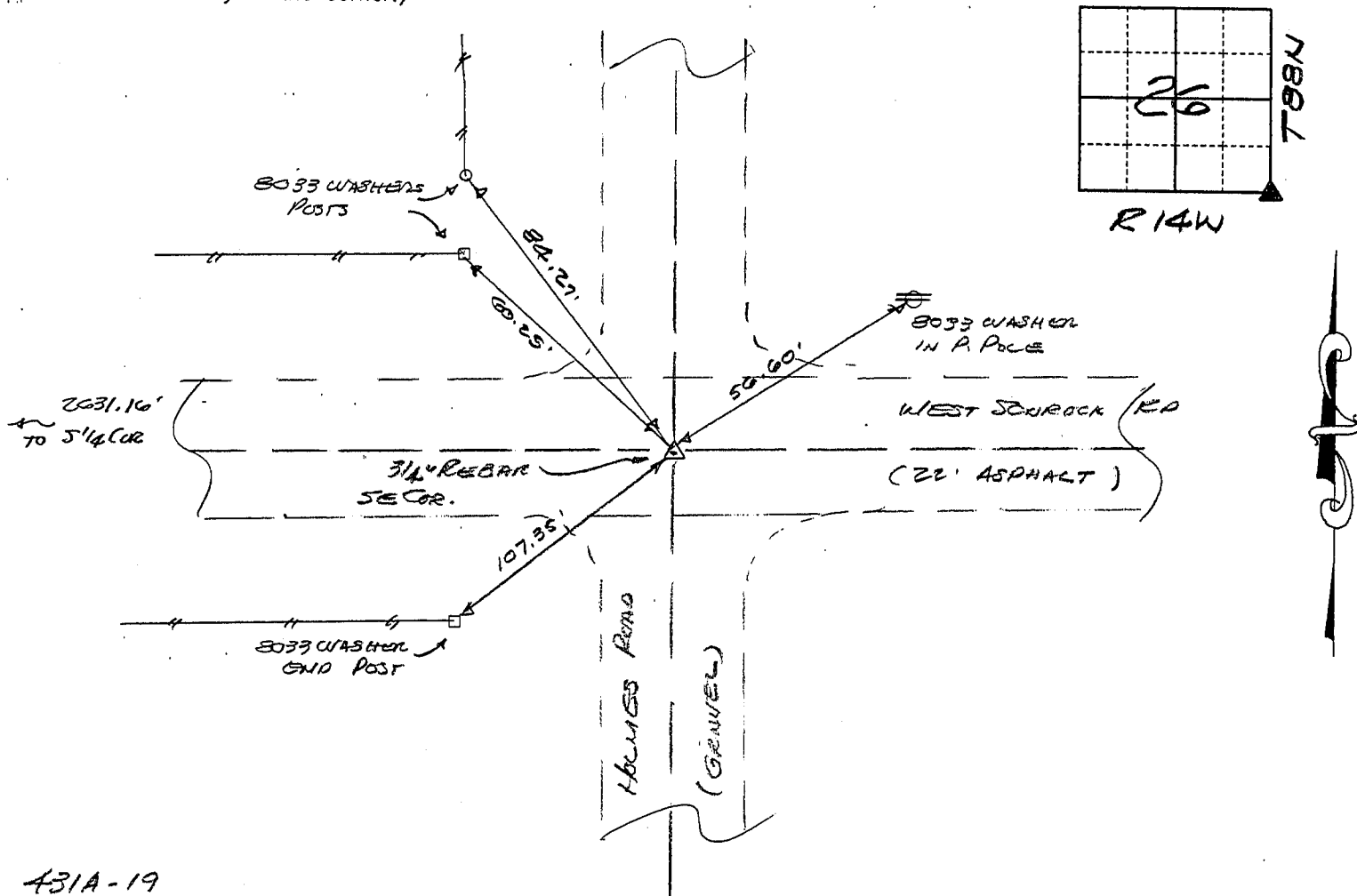
Land Survey Monuments situated in Section 26, Township 88N, Range 14W, of the Fifth Principal Meridian, BLACK HAWK County, Iowa.  
Previously recorded in N/A in County Recorder's Office.  
(book, page, document number, etc.)

(Show reason for preparing this certificate, the evidence and detailed procedures used in establishing the corner positions and monumentation found or placed.)

Monument Description and Remarks FOUND 3/4" Ø REBAR IN ASPHALT PAVING AT  
E HOLMES ROAD & WEST SCHROCK ROAD.

## PLAN - VIEW

with a minimum of three reference ties to durable physical objects, relevant monuments and physical conditions that will enable recovery of the corner.)



431A-19

I hereby certify that the survey work was completed and this certificate was prepared by me or under my direct personal supervision and that I am a duly registered land surveyor under the laws of the state of Iowa.

Signature:

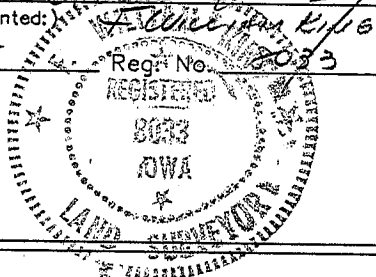
(Name typed or printed)

Date: Nov. 20, 1995

Reg. No.

2033

SEAL



### List Corners to be Indexed

Corners	Section	Twp	Range
SE	26	88N	14W

MISC. BK. 318 p. 631