



Doc ID: 007542700001 Type: GEN
Recorded: 01/25/2017 at 12:17:20 PM
Fee Amt: \$7.00 Page 1 of 1
Black Hawk County Iowa
SANDIE L. SMITH RECORDER
File 2017-00013440

Reserved for County Recorder's use.

* Kyle J. Helland, 1107 Technology Parkway, Cedar Falls, Iowa 50613-6951, (319)-266-0161

UNITED STATES PUBLIC LAND SURVEY CORNER CERTIFICATE OF

LAND SURVEY MONUMENTS SITUATED IN SECTION NO. 26, TOWNSHIP NO. 88 NORTH, RANGE
NO. 14 WEST OF THE FIFTH PRINCIPAL MERIDIAN, BLACK HAWK COUNTY, IOWA.
PREVIOUSLY RECORDED IN FEE BOOK # 2004 09124.

(SHOW REASON FOR PREPARING THIS CERTIFICATE, THE EVIDENCE AND DETAILED PROCEDURES USED IN ESTABLISHING THE
CORNER POSITIONS AND MONUMENTATION FOUND OR PLACED.)

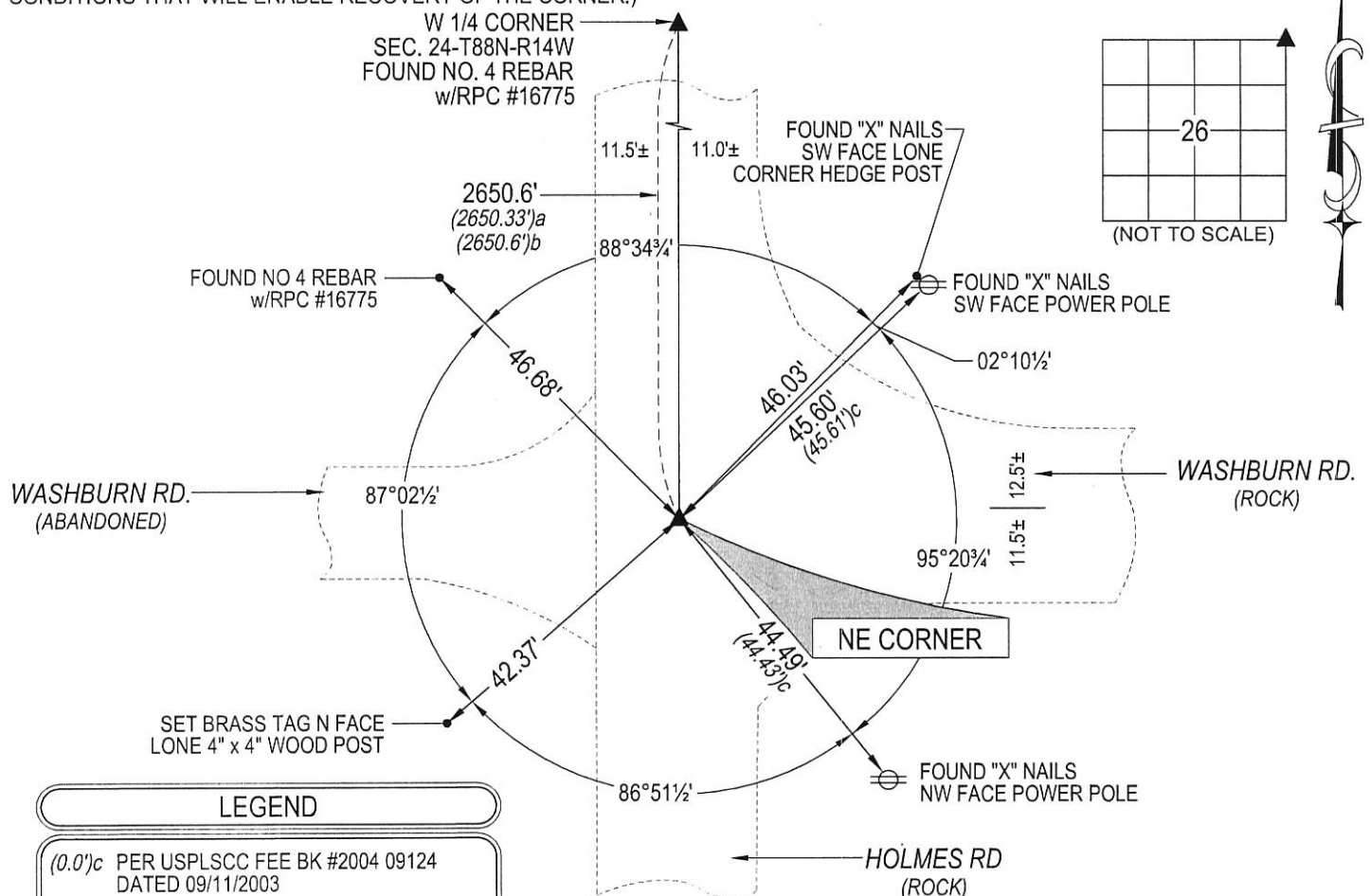
MONUMENT DESCRIPTION AND REMARKS:

ONLY TWO REFERENCE TIES REMAIN AND MONUMENTATION HAS CHANGED. SURVEY COMPLETED IN THE SE
1/4 SEC. 23-T88N-R14W & SW 1/4 SEC. 24-T88N-R14W.

→ **NE CORNER:** USPLSCC FEE BK # 2004-09124 DATED 09/08/2003 CALLS FOR [FOUND NO. 5 REBAR w/PINK
FLAGGING CORRESPONDING TO BLACK HAWK ENGINEER REFERENCE TIES & PLATS OF SURVEY RECORDED
IN 275 MISC. 567 & 3212 MISC. 978. CORNER IS 0.2' DEEP]. SEARCHED AREA FOUND 3/4"Ø SMOOTH IRON PIN.

PLAN VIEW

(SHOW A MINIMUM OF THREE REFERENCE TIES TO DURABLE PHYSICAL OBJECTS, RELEVANT MONUMENTS AND PHYSICAL
CONDITIONS THAT WILL ENABLE RECOVERY OF THE CORNER.)



LEGEND

(0.0')^c PER USPLSCC FEE BK #2004 09124
DATED 09/11/2003

(0.0')^a PER PLAT OF SURVEY DATED
04/22/2006 FEE BK # 2006-25457

(0.0')^b PER PLAT OF SURVEY DATED
01/18/2012 FEE BK # 2012-00013731

(BEARINGS ARE ASSUMED)



HELLAND ENGINEERING & SURVEYING, LTD.
1107 Technology Parkway
Cedar Falls, Iowa 50613-6951
(319)-266-0161

SHINER = 8d. NAIL & 1 5/16"Ø METAL SHINER DRAWN BY: SMN
BRASS TAG = 8d. NAIL & 13/16"Ø BRASS TAG
OPC = PLASTIC CAP (O=ORANGE, R=RED, Y=YELLOW)
(00') RECORDED AS FILE NAME: 16-221-25.DWG



I hereby certify that this land surveying document was prepared
and the related survey work was performed by me or under my
direct personal supervision and that I am a duly licensed
Professional Land Surveyor under the laws of the State of Iowa.

Kyle J. Helland
License Number 23212
My license renewal date is December 31, 2017.
All pages or sheets are covered by this seal except:

LIST CORNERS TO BE INDEXED

CORNER	SECTION	TOWNSHIP	RANGE
NE CORNER	26	88N	14W
SE CORNER	23	88N	14W
SW CORNER	24	88N	14W
NW CORNER	25	88N	14W