

INDEXED
MARGIN
PROOF
COMPARE

BLACK HAWK COUNTY IOWA:SS
Filed for record Mar 27, 2000 at
4:00 P.M. and recorded in Book _____
of _____ Page _____
Recorder
Fee 1-5.00/
VAN WINKLE-JACOB ENGINEERING, INC
6221 CHANCELLOR DR
CEDAR FALLS IA 50613

019958

UNITED STATES PUBLIC LAND SURVEY CORNER CERTIFICATE
OF

Land Survey Monuments situated in Section 25, Township 88 N, Range
14 W, of the Fifth Principal Meridian, BLACKHAWK County, Iowa
Previously recorded in Book _____, Page _____.

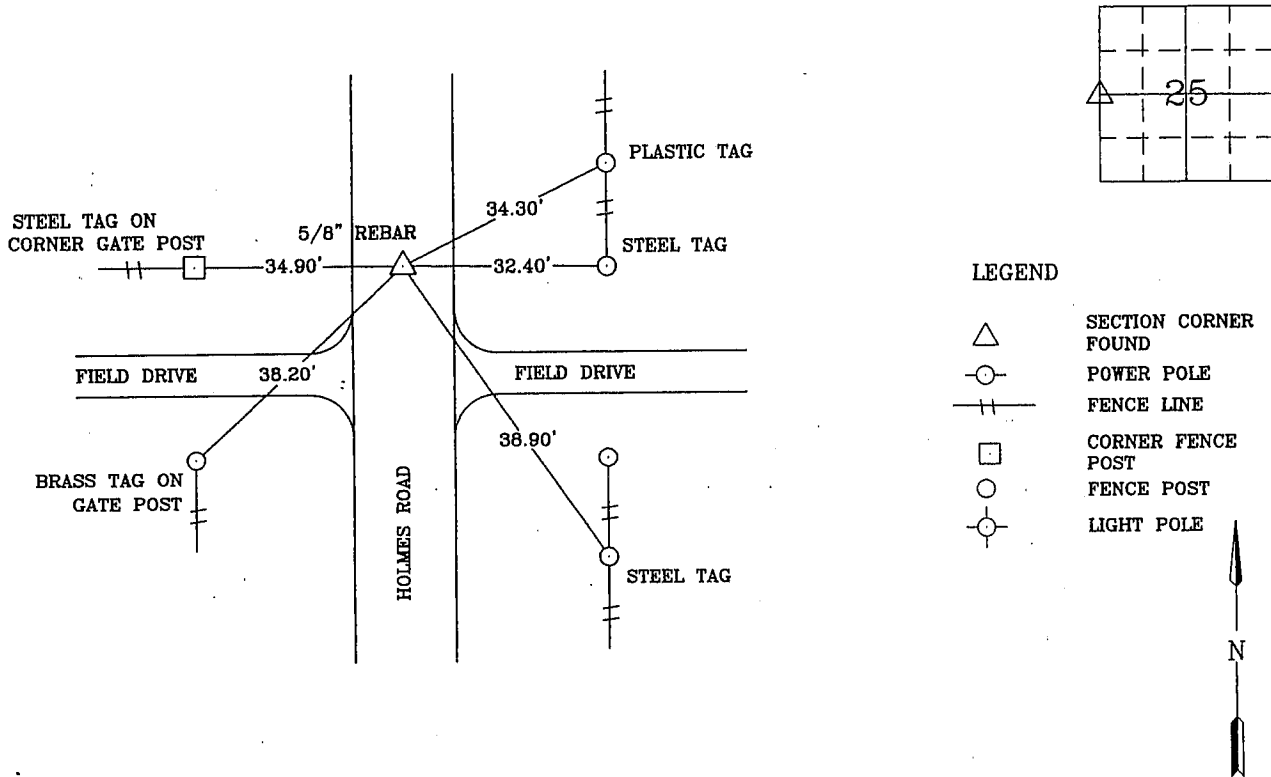
Show reason for preparing this certificate, the evidence and detailed procedures used in establishing the corner positions and monumentation found or placed.)

Monument Description and Remarks: W 1/4 - FOUND 5/8" REBAR ON CENTERLINE

HOLMES ROAD. 3" DEEP. NO CORNER CERTIFICATE PREVIOUSLY RECORDED.

PLAN - VIEW

(Show a minimum of three reference ties to durable physical objects, relevant monuments and physical conditions recovery of the corner.)



I hereby certify that the survey work was completed and this certificate was prepared by me or under my direct personal supervision and that I am a duly registered land surveyor under the laws of the state of Iowa.

Wendell J. Lupkes 3-27-00

REGISTERED LAND SURVEYOR NO. 12088



List Corners to be Indexed

Corners W(1/4) Section 25 Twp 88 Range 14

BK 0337 PG 807



Van Winkle - Jacob Engineering, Inc.
6221 CHANCELLOR DRIVE
CEDAR FALLS, IOWA - 319-266-5829

SECTION CORNER
REFERENCE TIES

SCALE
SCALE
DRAWN BY
M.V.
DATE
3-16-00