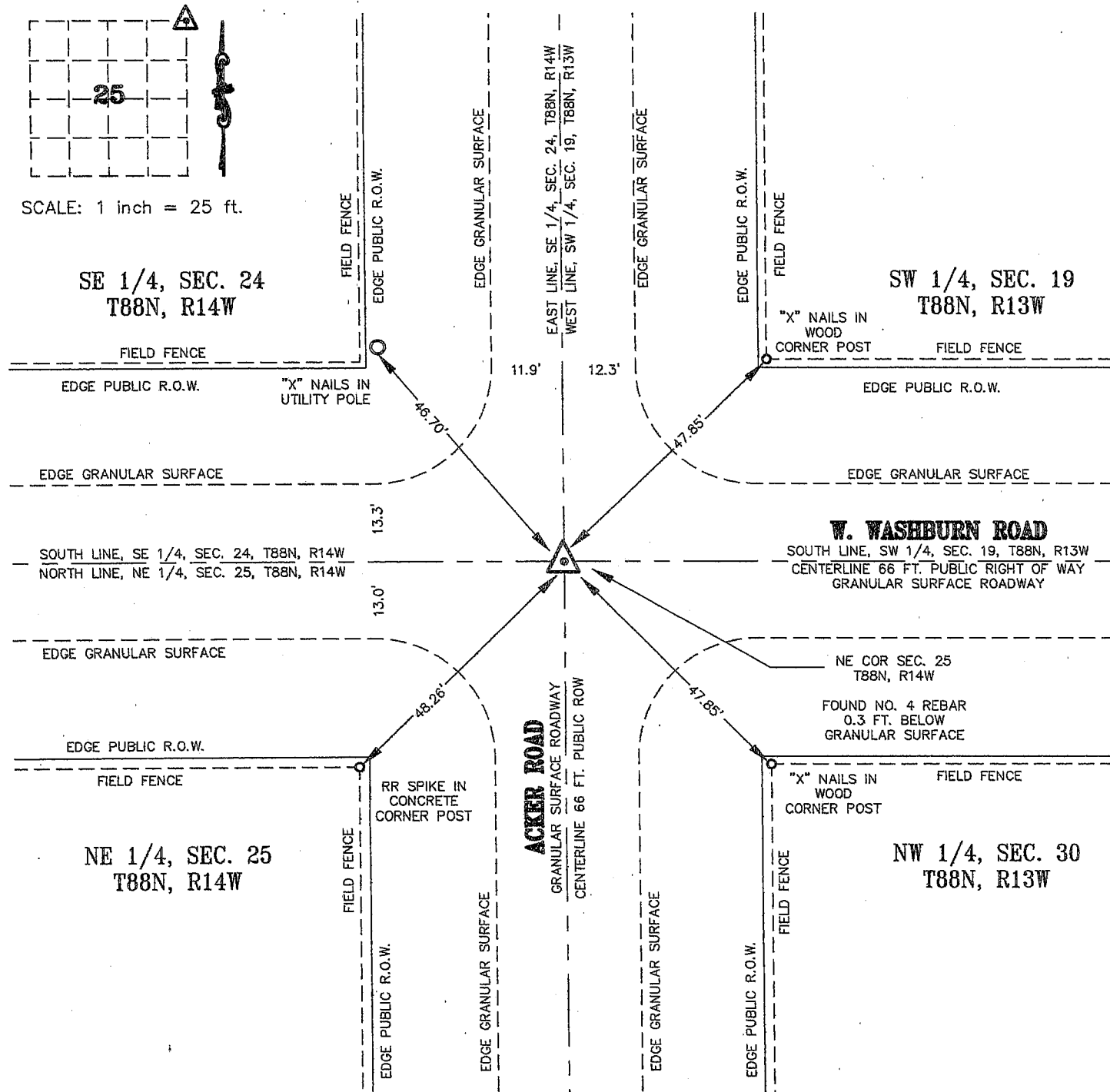


Kirk D. Eschliman, P.L.S. Iowa Lic. No. 9961, 723 Broadway Street, Waterloo, Iowa 50703 - Phone: 319-234-0509

# UNITED STATES PUBLIC LAND SURVEY CORNER CERTIFICATE OF LAND SURVEY MONUMENTS SITUATED IN SECTION 25, TOWNSHIP 88 NORTH, RANGE 14 WEST, OF THE FIFTH PRINCIPAL MERIDIAN, BLACK HAWK COUNTY, IOWA. PREVIOUSLY NOT RECORDED.

(SHOW REASON FOR PREPARING THIS CERTIFICATE, THE EVIDENCE AND DETAILED PROCEDURES USED IN ESTABLISHING THE CORNER POSITIONS AND MONUMENTATION FOUND OR PLACED.)

MONUMENT DESCRIPTION AND REMARKS: NO CURRENT SECTION CORNER CERTIFICATE ON FILE IN THE BLACK HAWK COUNTY RECORDER'S OFFICE. FOUND NO. 4 REBAR 0.3' DEEP IN GRANULAR SURFACE ROADWAY USING EVIDENCE FOUND IN THE AREA AND 1938 CHAINAGE NOTES. MONUMENT USED FOR SURVEY IN NE 1/4 OF SECTION 25.



I HEREBY CERTIFY THAT THIS LAND SURVEYING DOCUMENT WAS PREPARED AND THE RELATED SURVEY WORK WAS PERFORMED BY ME OR UNDER MY DIRECT PERSONAL SUPERVISION AND THAT I AM A DULY LICENSED LAND SURVEYOR UNDER THE LAWS OF THE STATE OF IOWA.

*Kirk D. Eschliman*

DATE: 04/19/2007

KIRK D. ESCHLIMAN, P.L.S. IOWA LIC. NO. 9961  
MY LICENSE RENEWAL DATE IS DECEMBER 31, 2007  
PAGES OR SHEETS COVERED BY THIS SIGNATURE & SEAL: SHEET 1 OF 1



## LIST OF CORNERS TO BE INDEXED

CORNER	SEC	TWP	RANGE
NE COR	25	88	14

**KESS & ASSOCIATES, INC.**  
723 BROADWAY, WATERLOO, IOWA 50703-5811 PHONE: (319) 234-0509

DATE OF FIELD WORK: APRIL 16, 2007  
DWG. DATE: 04/19/2007 DRAWN BY: BJ  
CADD FILE: 07A49SCC1.DWG PROJECT NO.: 0