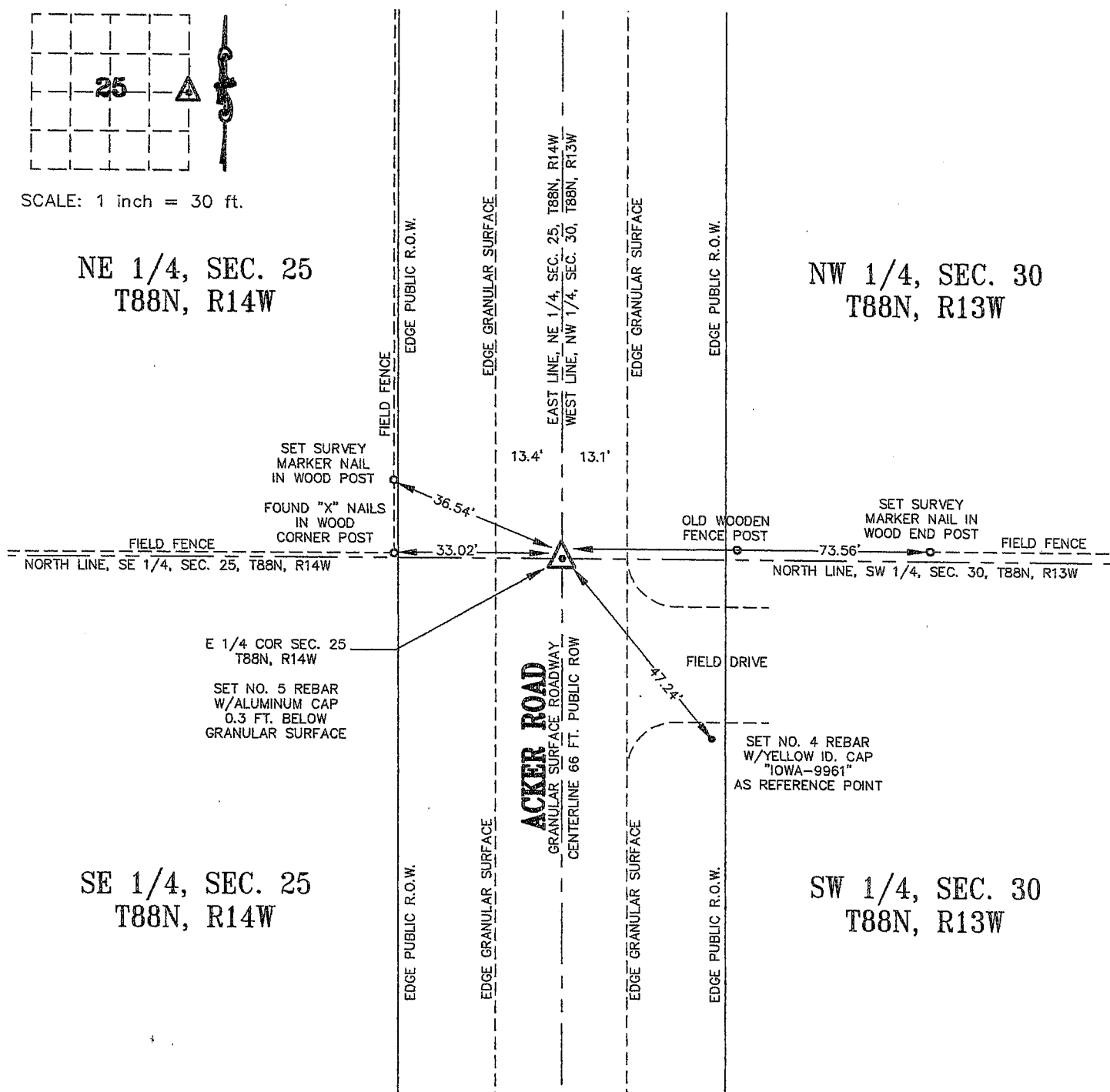


Kirk D. Eschliman, P.L.S. Iowa Lic. No. 9961, 723 Broadway Street, Waterloo, Iowa 50703 - Phone: 319-234-0509


UNITED STATES PUBLIC LAND SURVEY CORNER CERTIFICATE OF
LAND SURVEY MONUMENTS SITUATED IN SECTION 25, TOWNSHIP 88 NORTH, RANGE 14 WEST, OF THE FIFTH PRINCIPAL MERIDIAN, BLACK HAWK COUNTY, IOWA. PREVIOUSLY RECORDED IN DOCUMENT NO. 2000 019961.

(SHOW REASON FOR PREPARING THIS CERTIFICATE, THE EVIDENCE AND DETAILED PROCEDURES USED IN ESTABLISHING THE CORNER POSITIONS AND MONUMENTATION FOUND OR PLACED.)

MONUMENT DESCRIPTION AND REMARKS: SECTION CORNER CERTIFICATE ON FILE IN THE BLACK HAWK COUNTY RECORDER'S OFFICE IN DOC. NO. 2000 019961. FOUND BENT NO. 4 REBAR IN GRANULAR SURFACE ROADWAY. MONUMENT WAS REPLACED IN THE SAME LOCATION BY NO. 5 REBAR WITH 2 INCH ALUMINUM CAP, 0.3' BELOW GRANULAR SURFACE, AND RETIED. MONUMENT USED FOR SURVEY IN NE 1/4 OF SECTION 25.



I HEREBY CERTIFY THAT THIS LAND SURVEYING DOCUMENT WAS PREPARED AND THE RELATED SURVEY WORK WAS PERFORMED BY ME OR UNDER MY DIRECT PERSONAL SUPERVISION AND THAT I AM A DULY LICENSED LAND SURVEYOR UNDER THE LAWS OF THE STATE OF IOWA.

 DATE: 04/23/2007KIRK D. ESCHLIMAN, P.L.S. IOWA LIC. NO. 9961
MY LICENSE RENEWAL DATE IS DECEMBER 31, 2007
PAGES OR SHEETS COVERED BY THIS SIGNATURE & SEAL: SHEET 1 OF 1THIS PLAT IS NOT CERTIFIED
UNLESS AN EMBOSSED SEAL IS
AFFIXED HEREON.

LIST OF CORNERS TO BE INDEXED:

CORNER	SEC	TWP	RANGE
E 1/4	25	88	14

KESS & ASSOCIATES, INC.
723 BROADWAY, WATERLOO, IOWA 50703-5811 PHONE: (319) 234-0509DATE OF FIELD WORK: APRIL 16, 2007
DWG. DATE: 04/23/2007 DRAWN BY: BJYK
CADD FILE: 07A49SCC2.DWG PROJECT NO.: 07A4